

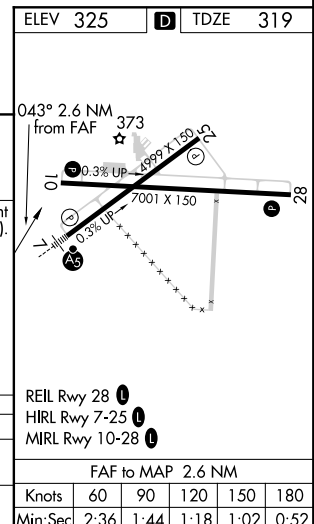
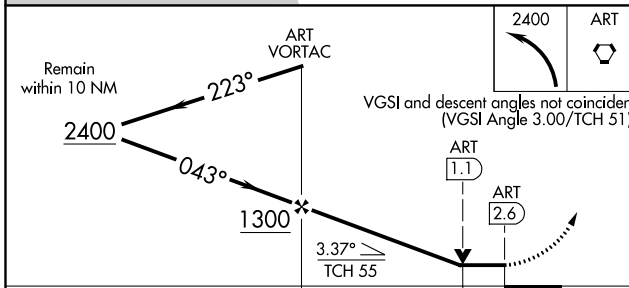
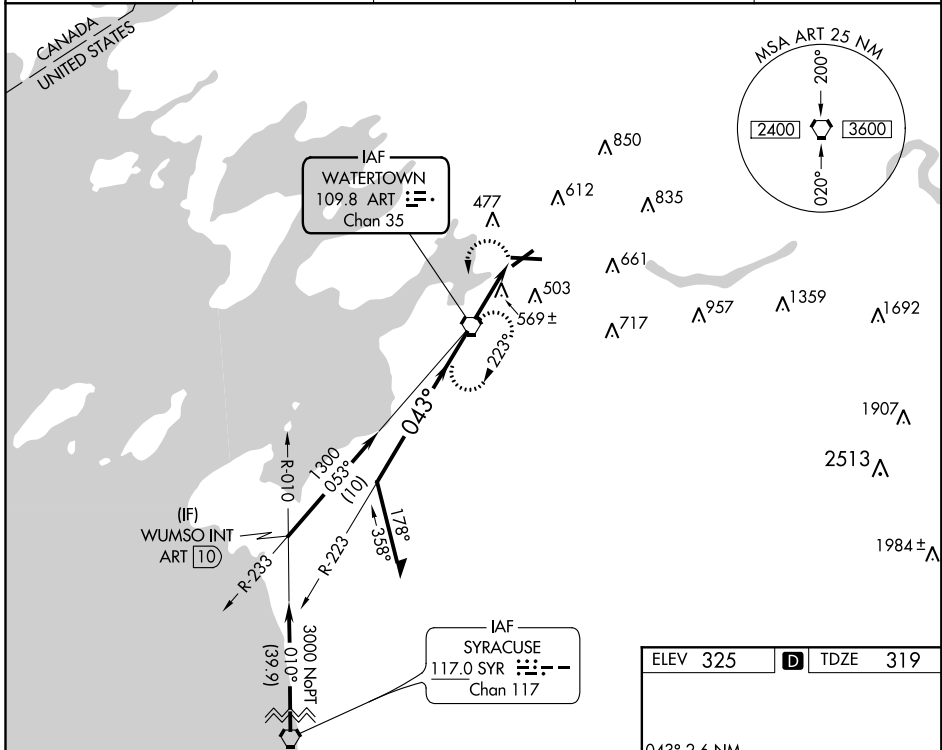
VORTAC ART 109.8 Chan 35	APP CRS 043°	Rwy Idg TDZE 319 Apt Elev 325
--	------------------------	---

VOR RWY 7

WATERTOWN INTL (ART)

Inoperative table does not apply. When VGSI inop, Circling Rwy 10 NA at night. Helicopter visibility reduction below 3/4 SM NA.	MALSR	MISSED APPROACH: Climbing left turn to 2400 direct ART VORTAC and hold, continue climb-in-hold to 2400.
---	-------	---

ASOS 132.325	GTB ATIS 119.525	WHEELER-SACK APP CON 124.875 257.6	CLNC DEL 120.8	UNICOM 123.0 (CTAF)
------------------------	----------------------------	--	--------------------------	-------------------------------



CATEGORY	A	B	C	D
S-7	840-1	521 (600-1)	840-1½	521 (600-1½)
CIRCLING	960-1	635 (700-1)	980-1¾ 655 (700-1¾)	1000-2¼ 675 (700-2¼)

NE-2, 10 SEP 2020 to 08 OCT 2020

NE-2, 10 SEP 2020 to 08 OCT 2020