

ILS or LOC RWY 13

ATLANTIC CITY INTL (ACY)

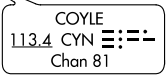
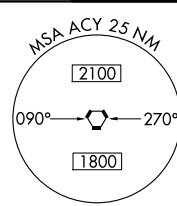
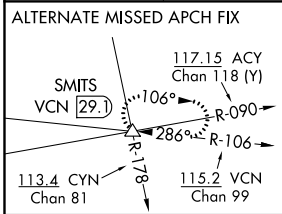
LOC/DME I-PVO 109.1 Chan 28	APP CRS 128°	Rwy ldg 10000 TDZE 75 Apt Elev 75
---	------------------------	--

ASR For inoperative ALS, increase S-ILS 13 Cat E visibility to RVR 4000 and S-LOC 13 Cats C/D/E visibility to RVR 6000.

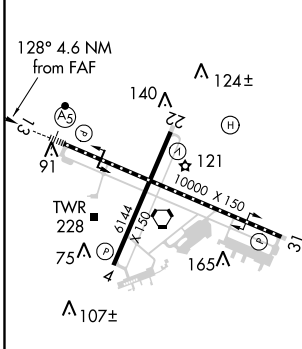


MISSED APPROACH: Climb to 600 then climbing left turn to 2000 on ACY VORTAC R-090 to SMITS INT/ACY 11 DME and hold.

ATIS 125.725 316.15	ATLANTIC CITY APP CON 124.6 327.125	ATLANTIC CITY TOWER 120.3 239.0	GND CON 121.9 284.6	CLNC DEL 127.85 353.775
-------------------------------	---	---	-------------------------------	-----------------------------------



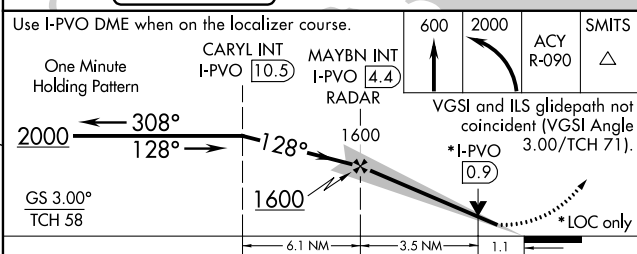
ELEV 75	D	TDZE 75
---------	----------	---------



TDZ/CL Rwy 13
HIRL Rwys 4-22 and 13-31
REIL Rwy 31

FAF to MAP 4.6 NM

Knots	60	90	120	150	180
Min:Sec	4:36	3:04	2:18	1:50	1:32



CATEGORY	A	B	C	D	E
S-ILS 13	275/18 200 (200-½)				275/24 200 (200-½)
S-LOC 13	480/24 405 (500-½)		480/40 405 (500-¾)		
CIRCLING	540-1 465 (500-1)		540-1½ 465 (500-1½)	640-2 565 (600-2)	760-2½ 685 (700-2½)

NE-2, 10 SEP 2020 to 08 OCT 2020

NE-2, 10 SEP 2020 to 08 OCT 2020