

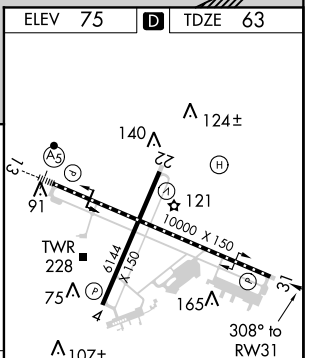
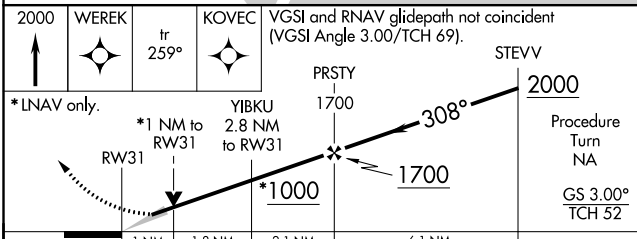
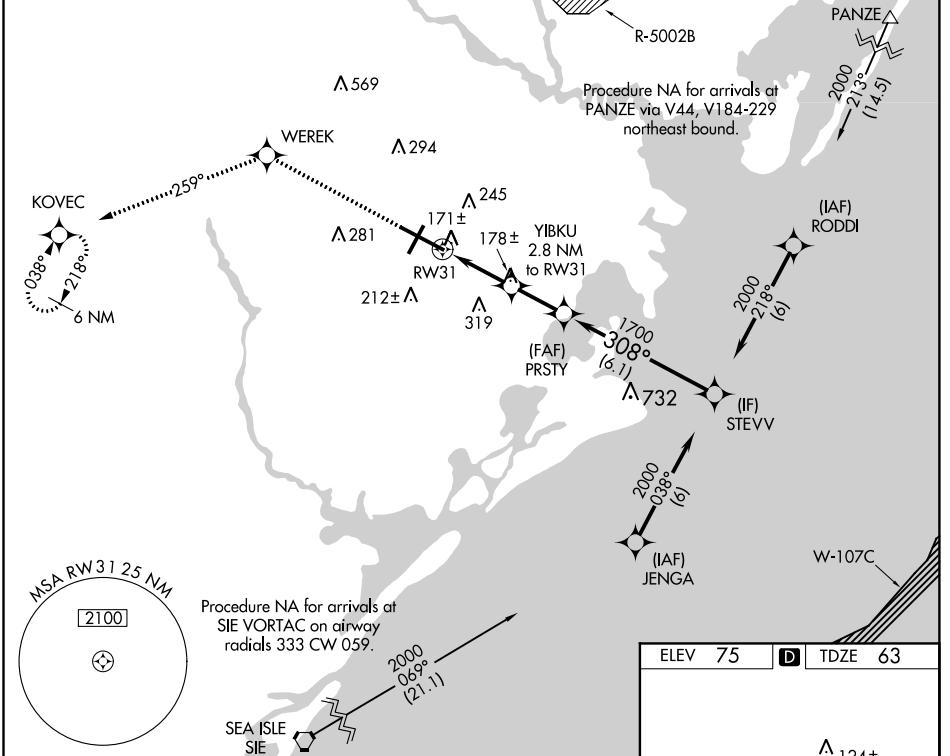
WAAS CH 50113 W31A	APP CRS 308°	Rwy Idg TDZE Apt Elev	10000 63 75
--	------------------------	-----------------------------	--

RNAV (GPS) Y RWY 31

ATLANTIC CITY INTL (ACY)

For uncompensated Baro-VNAV systems, LNAV/VNAV NA below -15°C (5°F) or above 48°C (118°F). ASR DME/DME RNP-0.3 NA.	MISSED APPROACH: Climb to 2000 direct WEREK and on track 259° to KOVEC and hold.
---	--

ATIS 125.725 316.15	ATLANTIC CITY APP CON 124.6 327.125	ATLANTIC CITY TOWER 120.3 239.0	GND CON 121.9 284.6	CLNC DEL 127.85 353.775
-------------------------------	---	---	-------------------------------	-----------------------------------



CATEGORY	A	B	C	D	E
LPV DA		263/40	200 (200-¾)		
LNAV/VNAV DA		421/60	358(400-1¼)		
LNAV MDA	440/50	377 (400-1)	440/60	377 (400-1¼)	
CIRCLING	540-1	465 (500-1)	540-1½ 465 (500-1½)	640-2 565 (600-2)	760-2½ 685 (700-2½)

TDZ/CL Rwy 13
HIRL Rwy 4-22 and 13-31
REIL Rwy 31

NE-2, 10 SEP 2020 to 08 OCT 2020

NE-2, 10 SEP 2020 to 08 OCT 2020