

LOC I-PGQ 110.1	APP CRS 165°	Rwy Idg 10518
		TDZE 100
		Apt Elev 100

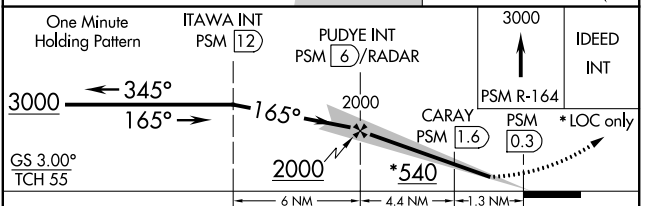
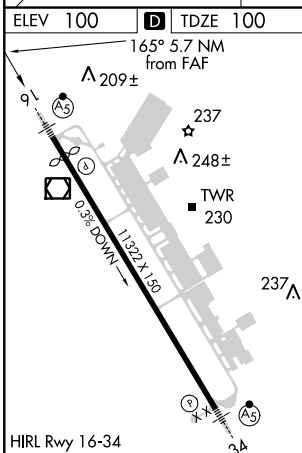
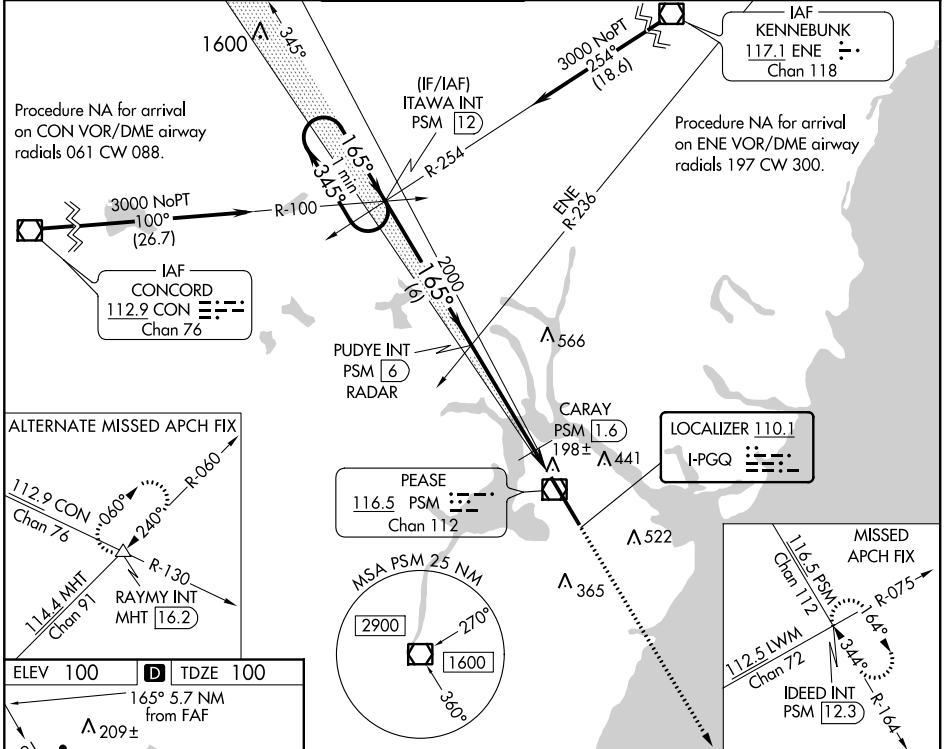
ILS or LOC RWY 16

PORTSMOUTH INTL AT PEASE (PSM)

⚠ **RVR 1800 authorized with use of FD or AP or HUD to DA. Circling NA East of Rwy 16-34. For inoperative MALSRS, increase S-ILS Cat E visibility to RVR 4000 and S-LOC 16 Cat E visibility to 1 1/2 SM. CARAY Fix Minimums: For inoperative MALSRS, increase ASR S-LOC 16 Cat E visibility to RVR 6000.

MALSRS MISSED APPROACH: Climb to 3000 on PSM VOR/DME R-164 to IDEED INT/PSM VOR/DME 12.3 DME and hold.

ATIS 132.05 273.5	BOSTON APP CON 125.05 269.4	PORTSMOUTH TOWER 128.4 269.0	GND CON 120.95 275.8	CLNC DEL 335.8	UNICOM 122.95
-----------------------------	---------------------------------------	--	--------------------------------	--------------------------	-------------------------



CATEGORY	A	B	C	D	E
S-ILS 16	** 300/24 200 (200-1/2)				
S-LOC 16	540/24	440 (500-1/2)	540/40 440 (500-3/4)	540/50	440 (500-1)
CIRCLING	540-1	560-1	560-1 1/2	680-2	800-2 1/2
	440 (500-1)	460 (500-1)	460 (500-1 1/2)	580 (600-2)	700 (700-2 1/2)
CARAY FIX MINIMUMS					
S-LOC 16	460/24 360 (400-1/2)		460/40 360 (400-3/4)		
CIRCLING	480-1	560-1	560-1 1/2	680-2	800-2 1/2
	380 (400-1)	460 (500-1)	460 (500-1 1/2)	580 (600-2)	700 (700-2 1/2)

NE-1, 10 SEP 2020 to 08 OCT 2020

NE-1, 10 SEP 2020 to 08 OCT 2020