

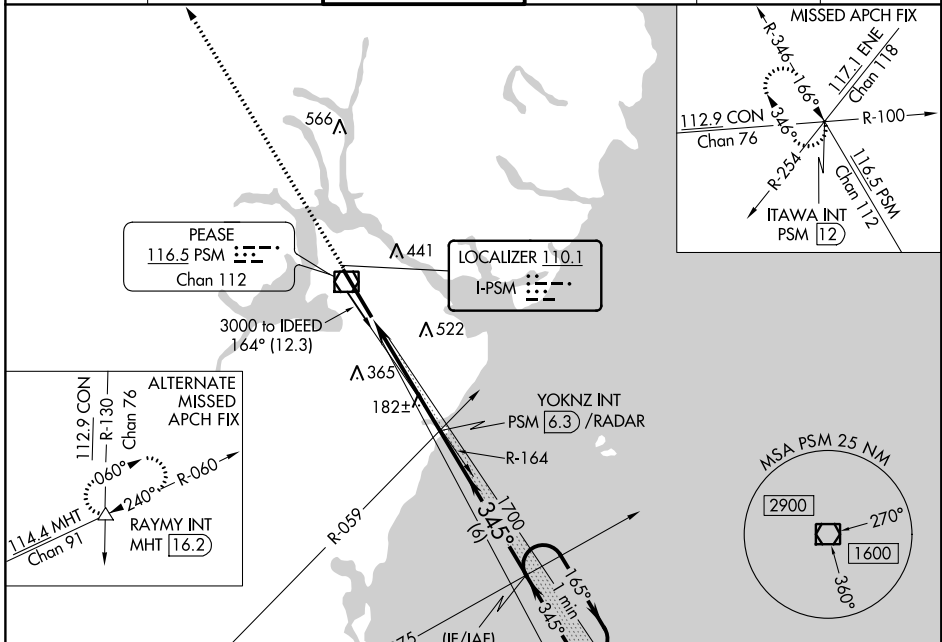
LOC I-PSM <b>110.1</b>	APP CRS <b>345°</b>	Rwy Idg TDZE Apt Elev	<b>11321</b> <b>84</b> <b>100</b>
---------------------------	------------------------	-----------------------------	---

# ILS or LOC RWY 34

PORTSMOUTH INTL AT PEASE (PSM)

<p>ASR</p>	<p>Circling NA East of Rwy 16-34. For inoperative MALSR, increase S-ILS 34 Cat E visibility to RVR 4000 and S-LOC 34 Cat E visibility to RVR 6000.</p>	<p>MALSR</p>	<p>MISSED APPROACH: Climb to 3000 via PSM VOR/DME R-346 to ITAWA INT/PSM VOR/DME 12 DME and hold.</p>
------------	--	--------------	---

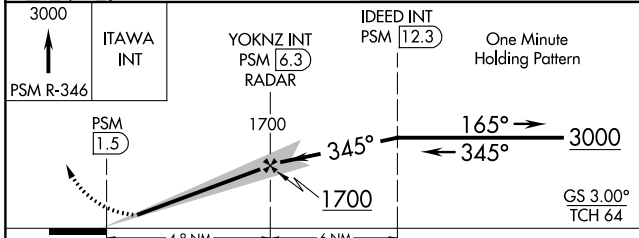
ATIS <b>132.05 273.5</b>	BOSTON APP CON <b>125.05 269.4</b>	PORTSMOUTH TOWER <b>128.4 269.0</b>	GND CON <b>120.95 275.8</b>	CLNC DEL <b>335.8</b>	UNICOM <b>122.95</b>
-----------------------------	---------------------------------------	--	--------------------------------	--------------------------	-------------------------



NE-1, 10 SEP 2020 to 08 OCT 2020

NE-1, 10 SEP 2020 to 08 OCT 2020

ELEV 100	TDZE 84
----------	---------



CATEGORY	A	B	C	D	E
S-ILS 34	284/24 200 (200-1/2)				
S-LOC 34	440/24 356 (400-1/2) 440/40 356 (400-3/4)				
CIRCLING	480-1 380 (400-1)	560-1 460 (500-1)	560-1 1/2 460 (500-1 1/2)	680-2 580 (600-2)	800-2 1/2 700 (800-2 1/2)

