

WAAS Ch 97323 W34A	APP CRS 345°	Rwy Idg TDZE 84 Apt Elev 100	11321
--	------------------------	--	--------------

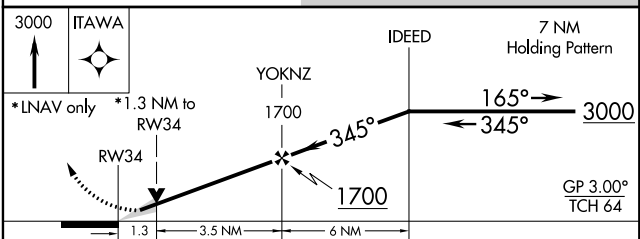
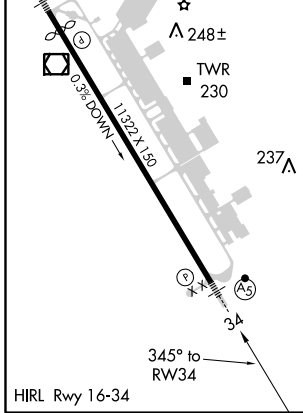
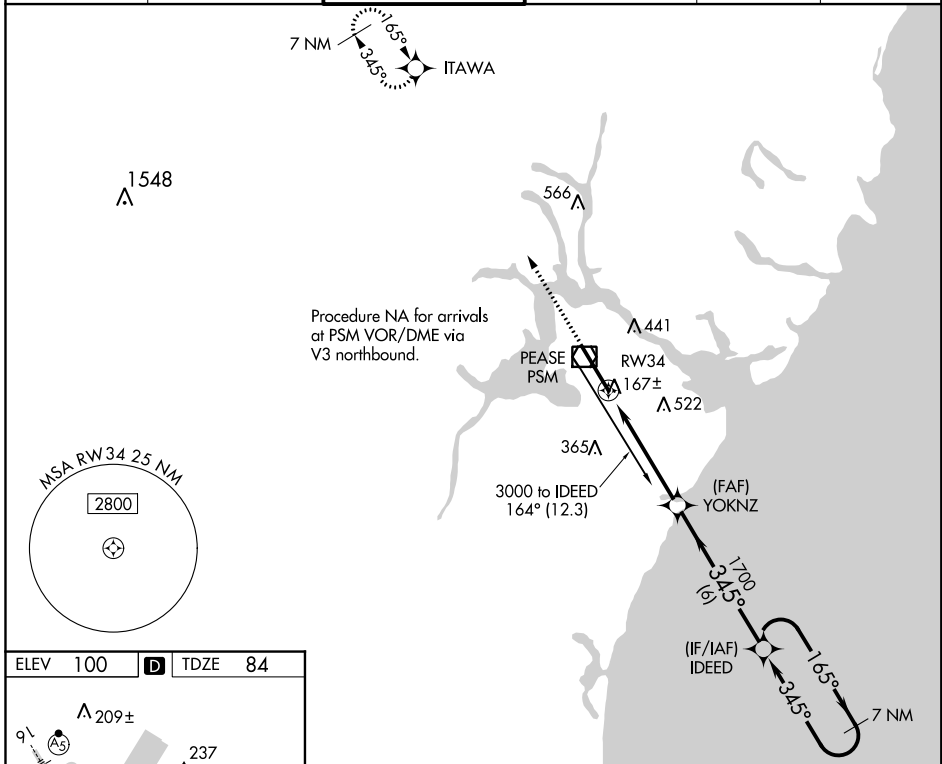
RNAV (GPS) RWY 34

PORTSMOUTH INTL AT PEASE (PSM)

⚠ Circling NA East of Rwy 16-34. For uncompensated Baro-VNAV systems, LNAV/VNAV NA below -15°C (5°F) or above 48°C (118°F). DME/DME RNP-0.3 NA. For inoperative MALSRR, increase LPV Cat E visibility to RVR 4000, LNAV/VNAV Cat E visibility to 1½ miles, and LNAV Cat E visibility to 1¾ miles.

MALSRR MISSED APPROACH: Climb to 3000 direct ITAWA and hold.

ATIS 132.05 273.5	BOSTON APP CON 125.05 269.4	PORTSMOUTH TOWER 128.4 269.0	GND CON 120.95 275.8	CLNC DEL 335.8	UNICOM 122.95
-----------------------------	---------------------------------------	---	--------------------------------	--------------------------	-------------------------



CATEGORY	A	B	C	D	E
LPV DA	284/24		200 (200-½)		
LNAV/VNAV DA	530/50		446 (500-1)		
LNAV MDA	560/24	476 (500-½)	560/40 476 (500-¾)	560/50 476 (500-1)	560/60 476 (500-1¼)
CIRCLING	560-1	460 (500-1)	560-1½ 460 (500-1½)	680-2 580 (600-2)	800-2½ 700 (800-2½)

NE-1, 10 SEP 2020 to 08 OCT 2020

NE-1, 10 SEP 2020 to 08 OCT 2020