

TANKER TWO DEPARTURE

AL-678 (FAA)

PORTSMOUTH INTL AT PEASE (PSM)
PORTSMOUTH, NEW HAMPSHIRE

ATIS 132.05 273.5
CLNC DEL
335.8
GND CON
120.95 275.8
PORTSMOUTH TOWER
128.4 269.0
BOSTON DEP CON
125.05 269.4

LEBANON
113.7 LEB Chan 84
N43°40.73' - W72°12.96'
L-32

KENNEBUNK
117.1 ENE Chan 118
N43°25.54' - W70°36.81'
L-32, H-11-12

CONCORD
112.9 CON Chan 76
N43°13.19' - W71°34.53'
L-32

CAMBRIDGE
115.0 CAM Chan 97
N42°59.66' - W73°20.64'
L-32-34, H-11-12

PEASE
116.5 PSM Chan 112
N43°05.07' - W70°49.92'
L-32-33, H-11-12

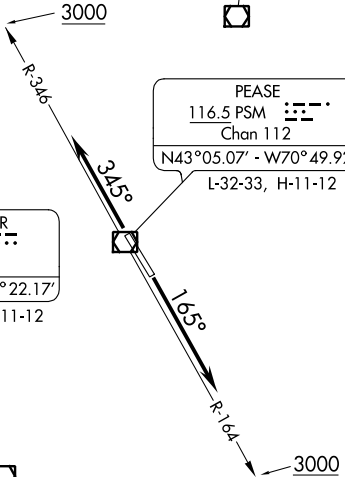
MANCHESTER
114.4 MHT Chan 91
N42°52.11' - W71°22.17'
L-32-33, H-11-12

GARDNER
110.6 GDM Chan 43
N42°32.76' - W72°03.49'
L-33-34, H-11-12

SCUDD
N42°36.18'
W70°13.82'
L-33, H-11-12

LAWRENCE
112.5 LWM Chan 72
N42°44.43' - W71°05.69'
L-33

BOSTON
112.7 BOS Chan 74
N42°21.45' - W70°59.37'
L-33-34, H-10-11-12



NE-1, 10 SEP 2020 to 08 OCT 2020

NE-1, 10 SEP 2020 to 08 OCT 2020

TAKEOFF MINIMUMS:

Rwy 16, 34: Standard.

NOTE: RADAR required.

NOTE: Chart not to scale.



DEPARTURE ROUTE DESCRIPTION

TAKEOFF RUNWAY 16: Climb heading 165° to intercept PSM VOR/DME R-164 to 3000 or as assigned by ATC, Thence. . . .

TAKEOFF RUNWAY 34: Climb heading 345° to intercept PSM VOR/DME R-346 to 3000 or as assigned by ATC, Thence. . . .

. . . . Expect radar vectors to assigned route/navaid/fix. Expect further clearance to filed altitude/flight level 5 minutes after departure.

TANKER TWO DEPARTURE