

REDSTONE ARSENAL, ALABAMA

RNAV (GPS) RWY 17

WAAS CH 45638 W17A	APCH CRS 173°	Rwy ldg 7297	TDZE 685
		Arprt Elev 685	

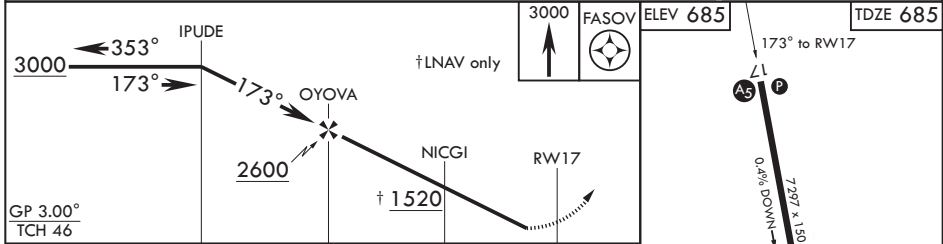
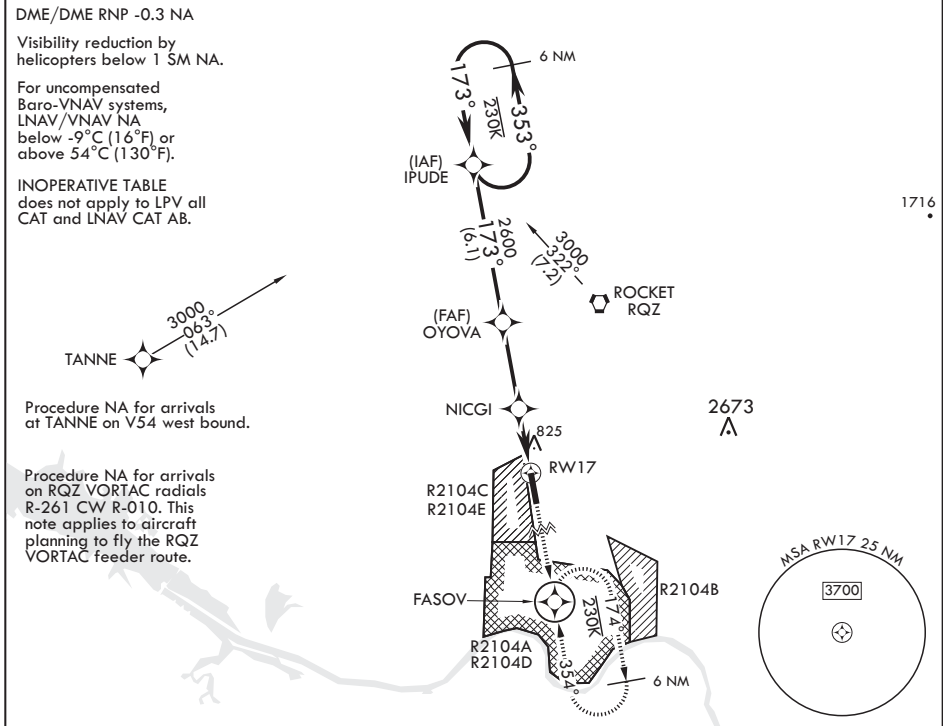
AL-703 (USA)

REDSTONE AAF (KHUA)

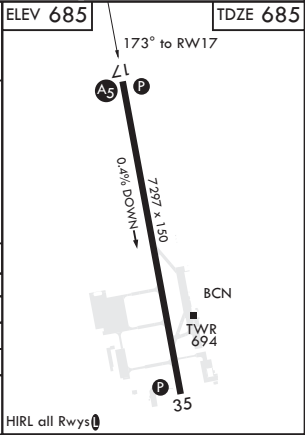
⚠ * When ALS inop, increase CAT E vis to 1 1/2 miles.
****** When ALS inop, increase CAT CDE vis to 1 3/8 miles.
******* Circling not authorized E of Rwy 17-35.

MALSR MISSED APPROACH: Climb to 3000 direct FASOV and hold.

ATIS 120.65	HUNTSVILLE APP CON/DEP CON 118.05 239.0 W 125.6 354.1 E	TOWER* 126.95 (CTAF) 290.275	ASR/PAR
----------------	---	----------------------------------	---------



CATEGORY	A	B	C	D	E
LPV DA	935-1		250	(300-1)	
LNAV/VNAV DA*	1113-1		428	(500-1)	
LNAV MDA**	1180-1		495	(500-1)	
C CIRCLING***	1200-1 515 (600-1)	1240-1 555 (600-1)	1480-2 1/4 795 (800-2 1/4)	1740-3 1055 (1100-3)	



REDSTONE ARSENAL, ALABAMA

34°41'N - 86°41'W

REDSTONE AAF (KHUA)

Amdt 1A 03JAN19

RNAV (GPS) RWY 17

SE-4, 10 SEP 2020 to 08 OCT 2020

SE-4, 10 SEP 2020 to 08 OCT 2020