

REDSTONE ARSENAL, ALABAMA

RNAV (GPS) RWY 35

WAAS CH 50238 W35A	APCH CRS 353°	Rwy ldg TDZE Arprt Elev	7297 661 685
--------------------------	------------------	-------------------------------	--------------------

AL-703 (USA)

REDSTONE AAF (KHUA)

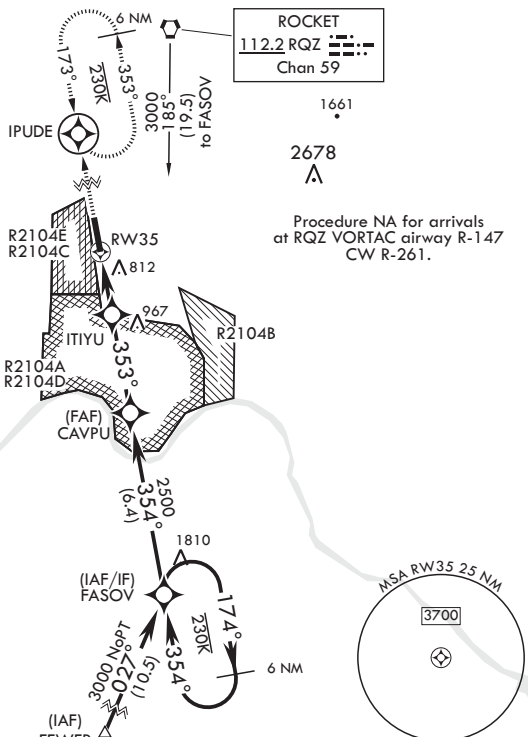
⚠ * Circling not authorized E of Rwy 17-35. MISSED APPROACH: Climb to 3000 direct IPUDE and hold.

ATIS 120.65	HUNTSVILLE APP CON/DEP CON 125.6 354.1	TOWER* 126.95 (CTAF) 290.275	PAR
-----------------------	--	---	-----

DME/DME RNP-0.3 NA

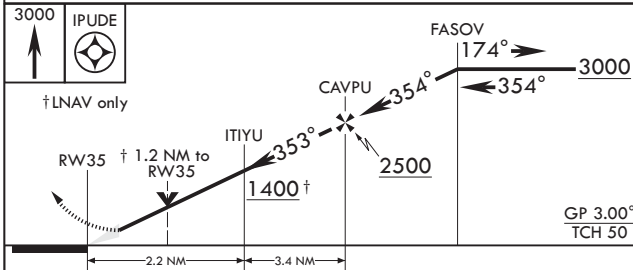
For uncompensated Baro-VNAV systems, LNAV/VNAV NA below -9°C (16°F) or above 54°C (130°F).

Inoperative table does not apply to LPV all CAT and LNAV CAT AB.

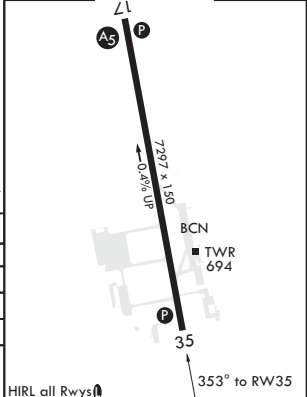


Procedure NA for arrivals at RQZ VORTAC airway R-147 CW R-261.

Procedure NA for arrivals at FEWER on V325 southeast bound.



ELEV 685	TDZE 661
----------	----------



CATEGORY	A	B	C	D	E
LPV DA	920-1		259	(300-1)	
LNAV/VNAV DA	1140-1 ⁵ / ₈		479	(500-1 ⁵ / ₈)	
LNAV MDA	1320-1 659 (700-1)		1320-1 ¹ / ₈ 659 (700-1 ⁵ / ₈)		
C CIRCLING*	1320-1 635 (700-1)		1480-2 ¹ / ₄ 795 (800-2 ¹ / ₄)	1740-3 1055 (1100-3)	

REDSTONE ARSENAL, ALABAMA

34°41'N - 86°41'W

REDSTONE AAF (KHUA)

Amdt 1A 10SEP20

RNAV (GPS) RWY 35

SE-4, 10 SEP 2020 to 08 OCT 2020

SE-4, 10 SEP 2020 to 08 OCT 2020