

# VOR RWY 35

VORTAC RQZ <b>112.2</b> Chan <b>59</b>	APCH CRS <b>015°</b>	Rwy ldg TDZE Arprt Elev <b>7297</b> <b>661</b> <b>685</b>
--	-------------------------	--

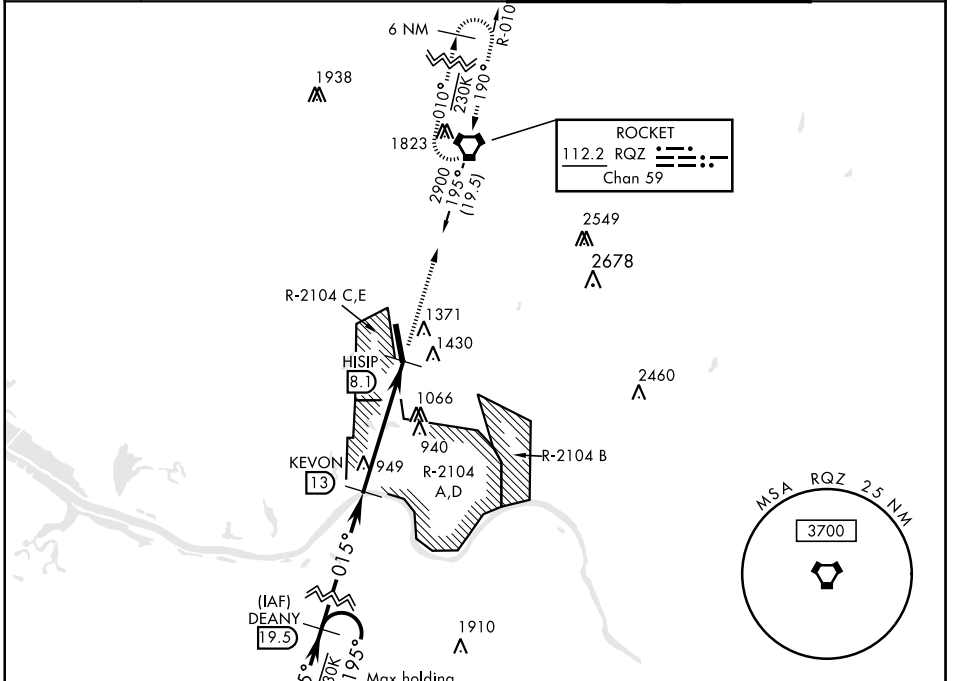
AL-703 [USA]

REDSTONE AAF (KHUA)

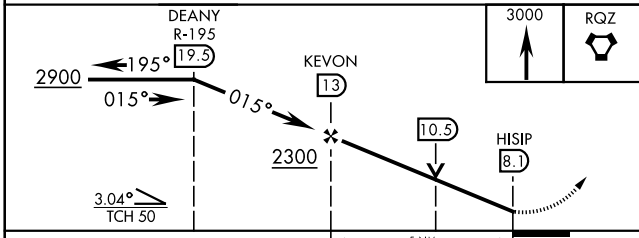
**⚠** \* Circling not authorized E of Rwy 17-35.  
High terrain and 1430' twr 1.7 NM E.

MISSED APPROACH: Climb to 3000 direct RQZ VORTAC and hold. Do not exceed 230 KIAS.

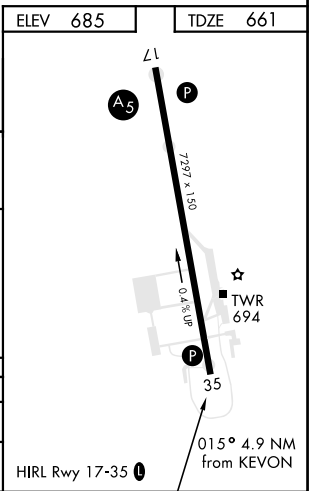
ATIS <b>120.65</b>	HUNTSVILLE APP CON <b>E 125.6 354.1 W 118.05 239.0</b>	REDSTONE TOWER ★ <b>126.95 (CTAF) 0 290.275</b>	PAR
-----------------------	---	--	-----



## DME REQUIRED



CATEGORY	A	B	C	D	E
S-35	1500-1 839 (900-1)	1500-1¼ 839 (900-1¼)	1500-2½	839	(900-2½)
<b>Ⓢ</b> CIRCLING*	1500-1¼	815 (900-1¼)	1500-2½ 815 (900-2½)	1740-3	1055 (1100-3)



# VOR RWY 35

SE-4, 10 SEP 2020 to 08 OCT 2020

SE-4, 10 SEP 2020 to 08 OCT 2020