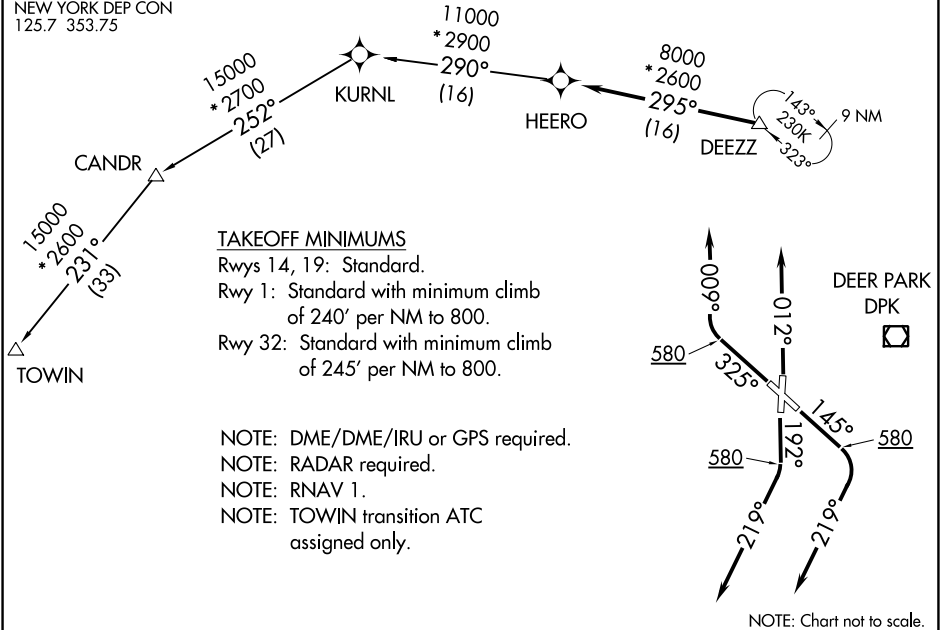


DEZZ FIVE DEPARTURE (RNAV)

ATIS
 126.65
 CLNC DEL
 128.25
 GND CON
 121.6 269.6
 REPUBLIC TOWER *
 118.8 279.65
 NEW YORK DEP CON
 125.7 353.75

**TOP ALTITUDE:
3000**



TAKEOFF MINIMUMS

Rwys 14, 19: Standard.

Rwy 1: Standard with minimum climb of 240' per NM to 800.

Rwy 32: Standard with minimum climb of 245' per NM to 800.

NOTE: DME/DME/IRU or GPS required.

NOTE: RADAR required.

NOTE: RNAV 1.

NOTE: TOWIN transition ATC assigned only.

DEER PARK
 DPK

NOTE: Chart not to scale.

NE-2, 10 SEP 2020 to 08 OCT 2020

NE-2, 10 SEP 2020 to 08 OCT 2020



DEPARTURE ROUTE DESCRIPTION

TAKEOFF RUNWAY 1: Climb heading 012°, thence

TAKEOFF RUNWAY 14: Climb heading 145° to 580, then climbing right turn heading 219°, thence

TAKEOFF RUNWAY 19: Climb heading 192° to 580, then climbing right turn heading 219°, thence

TAKEOFF RUNWAY 32: Climb heading 325° to 580, then climbing right turn heading 009°, thence

. . . . expect vectors to DEZZ, then on track 295° to HEERO. Maintain 3000.

Expect clearance to filed altitude/flight level within ten (10) minutes after departure.

CANDR TRANSITION (DEZZ5.CANDR)

TOWIN TRANSITION (DEZZ5.TOWIN)