


LOC I-FRG <b>111.9</b>	APP CRS <b>146°</b>	Rwy ldg TDZE Apt Elev	<b>6157</b> <b>77</b> <b>80</b>
---------------------------	------------------------	-----------------------------	---------------------------------------

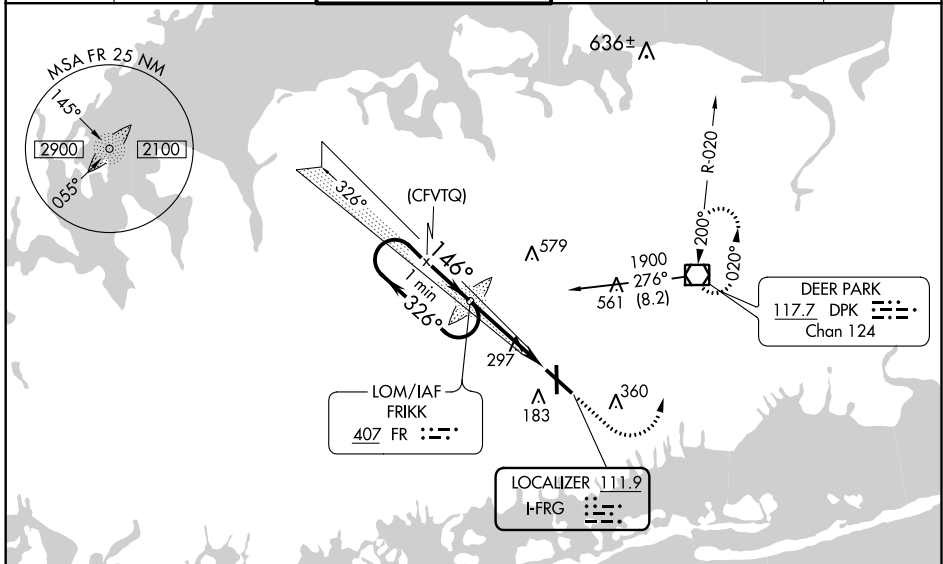
# ILS or LOC RWY 14

REPUBLIC (F'RG)

**▽** Inop table does not apply to S-ILS 14. For inop MALSR, increase S-LOC 14 Cats **△** A/B visibility to 1, Cats C/D visibility to 1 $\frac{1}{2}$ . Autopilot coupled approach NA below 310. When local altimeter setting not received, use Islip altimeter setting: increase S-ILS 14 DA to 314; increase all MDA 40 feet and Circling Cats C/D visibility  $\frac{1}{4}$  mile; inop table does not apply to S-ILS 14 all Cats; for inop MALSR, increase S-LOC 14 Cats A/B visibility to 1.

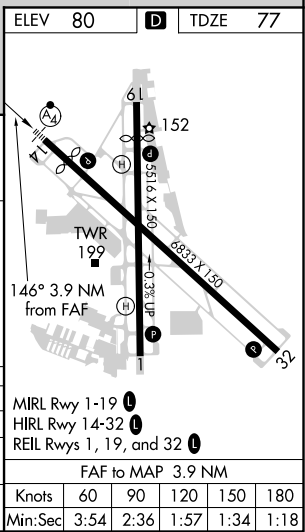
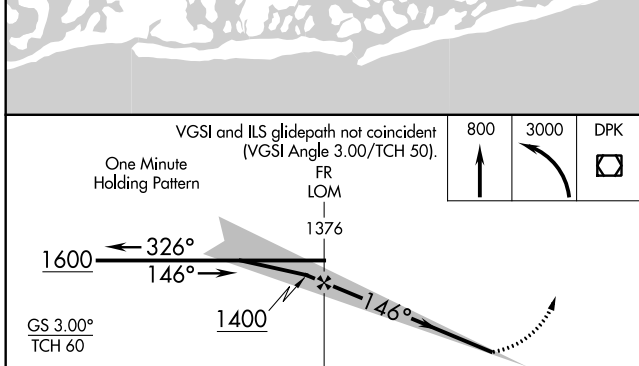
**MALSF**  
  
**MISSED APPROACH:** Climb to 800 then climbing left turn to 3000 direct DPKVOR/DME and hold, continue climb-in-hold to 3000.

ATIS <b>126.65</b>	NEW YORK APP CON <b>128.125 269.0</b>	REPUBLIC TOWER ★ <b>118.8 (CTAF) 279.65</b>	GND CON <b>121.6 269.6</b>	CLNC DEL <b>128.25</b>	UNICOM <b>122.95</b>
-----------------------	--	--	-------------------------------	---------------------------	-------------------------



NE-2, 10 SEP 2020 to 08 OCT 2020

NE-2, 10 SEP 2020 to 08 OCT 2020



CATEGORY	A	B	C	D
S-ILS 14	277- $\frac{3}{4}$ 200 (200- $\frac{3}{4}$ )			
S-LOC 14	560- $\frac{3}{4}$	483 (500- $\frac{3}{4}$ )	560-1	483 (500-1)
CIRCLING	560-1 480 (500-1)	600-1 520 (600-1)	720-1 $\frac{3}{4}$ 640 (700-1 $\frac{3}{4}$ )	720-2 640 (700-2)