

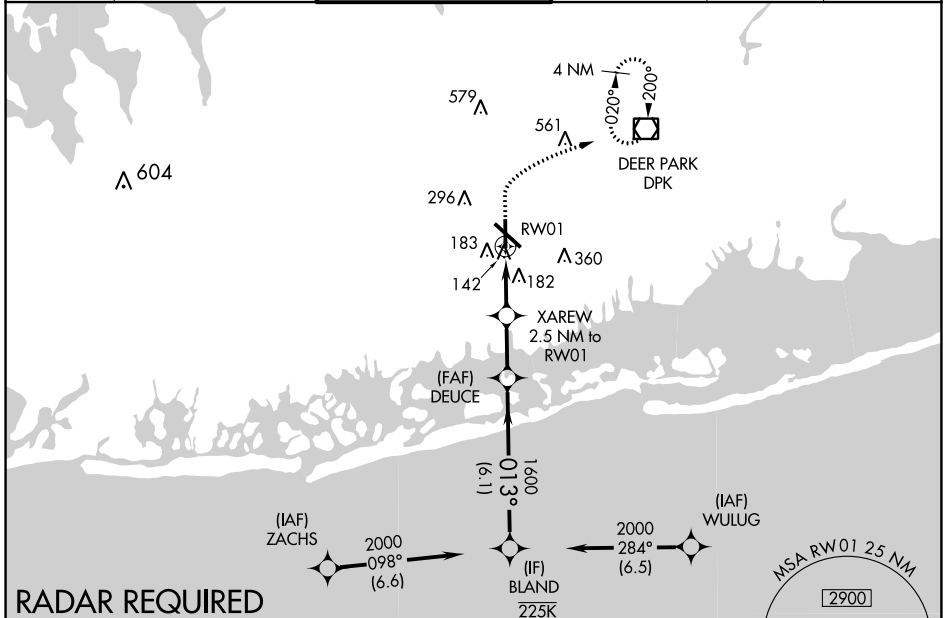
WAAS CH 82524 W01A	APP CRS 013°	Rwy Idg TDZE 72 Apt Elev 80
--	------------------------	---

RNAV (GPS) RWY 1

REPUBLIC (F.R.G)

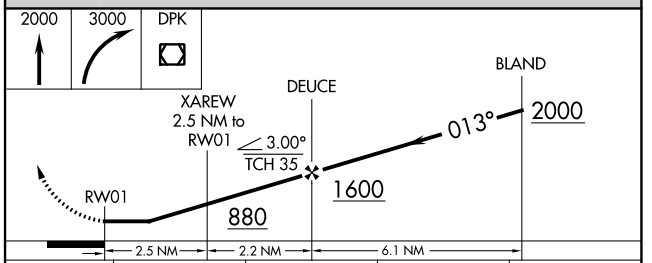
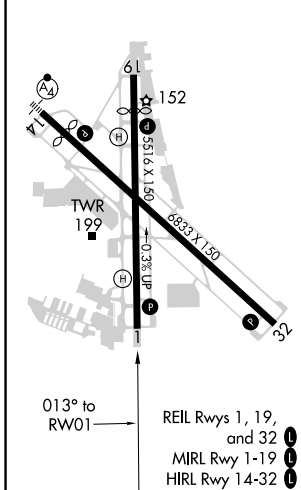
RNP APCH.	MISSED APPROACH: (Max 190K) Climb to 2000 then climbing right turn to 3000 direct DPK VOR/DME and hold.
<p>⚠ When local altimeter setting not received, use Islip altimeter setting and increase all MDA 40 feet and LNAV Cats C/D visibility $\frac{1}{8}$ SM and Circling Cats C/D visibility $\frac{1}{4}$ SM. Rwy 1 helicopter visibility reduction below 1 SM NA.</p>	

ATIS 126.65	NEW YORK APP CON 128.125 269.0	REPUBLIC TOWER ★ 118.8 (CTAF) 0 279.65	GND CON 121.6 269.6	CLNC DEL 128.25	UNICOM 122.95
-----------------------	--	--	-------------------------------	---------------------------	-------------------------



RADAR REQUIRED

ELEV 80	D	TDZE 72
---------	----------	---------



CATEGORY	A	B	C	D
LP MDA	400-1 328 (400-1)			
LNAV MDA	460-1	388 (400-1)	460-1 $\frac{1}{8}$	388 (400-1 $\frac{1}{8}$)
CIRCLING	560-1 480 (500-1)	600-1 520 (600-1)	720-1 $\frac{3}{4}$ 640 (700-1 $\frac{3}{4}$)	720-2 640 (700-2)

NE-2, 10 SEP 2020 to 08 OCT 2020

NE-2, 10 SEP 2020 to 08 OCT 2020