

WAAS CH <b>81924</b> <b>W19A</b>	APP CRS <b>193°</b>	Rwy Idg TDZE Apt Elev	<b>4727</b> <b>81</b> <b>81</b>
--	------------------------	-----------------------------	---------------------------------------

# RNAV (GPS) RWY 19

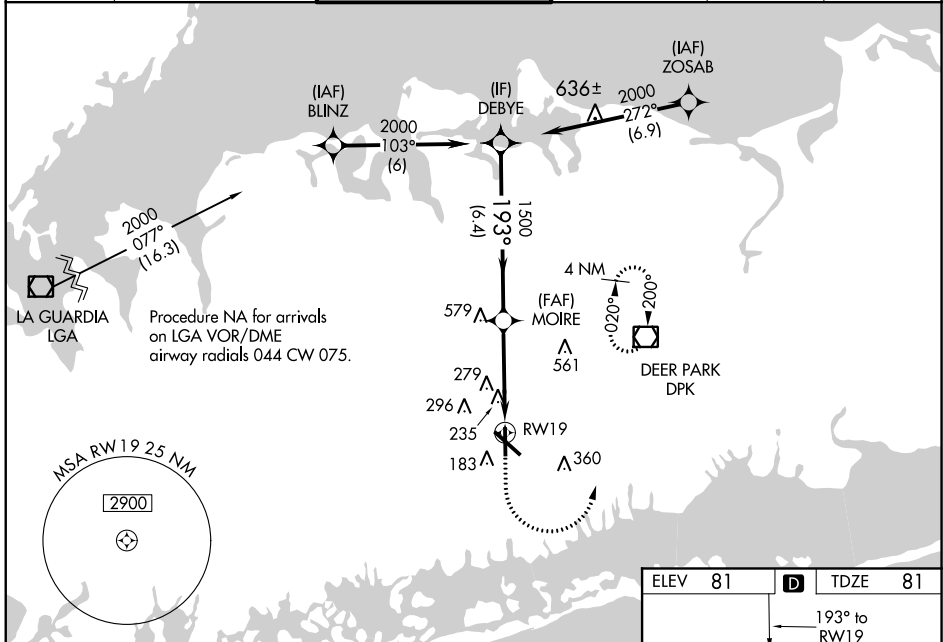
REPUBLIC (F'R'G)

RADAR required for procedure entry at ZOSAB.

**⚠** Baro-VNAV NA when using Islip altimeter setting. For uncompensated Baro-VNAV systems, LNAV/VNAV NA below -15°C or above 54°C. Rwy 19 helicopter visibility reduction below 1 SM NA. When local altimeter setting not received, use Islip altimeter setting and increase all DA 37 feet and all MDA 40 feet; increase LNAV/VNAV all Cats visibility 1/8 SM and Circling Cats C/D visibility 1/4 SM.

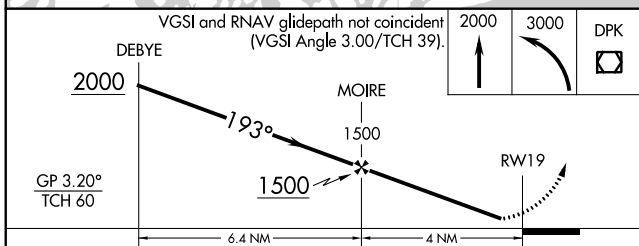
**MISSED APPROACH:**  
Climb to 2000 then climbing left turn to 3000 direct DPK VOR/DME and hold.

ATIS <b>126.65</b>	NEW YORK APP CON <b>128.125 269.0</b>	REPUBLIC TOWER ★ <b>118.8 (CTAF) 279.65</b>	GND CON <b>121.6 269.6</b>	CLNC DEL <b>128.25</b>	UNICOM <b>122.95</b>
-----------------------	--	--	-------------------------------	---------------------------	-------------------------



NE-2, 10 SEP 2020 to 08 OCT 2020

NE-2, 10 SEP 2020 to 08 OCT 2020



ELEV 81	<b>D</b>	TDZE 81
---------	----------	---------

MIRL Rwy 1-19  
HIRL Rwy 14-32  
REIL Rwys 1, 19, and 32

CATEGORY	A	B	C	D
LPV DA	348-1	267 (300-1)		NA
LNAV/VNAV DA	560-1½	479 (500-1½)		NA
LNAV MDA	540-1	459 (500-1)	540-1¾	459 (500-1¾)
CIRCLING	560-1 479 (500-1)	600-1 519 (600-1)	720-1¾ 639 (700-1¾)	720-2 639 (700-2)