

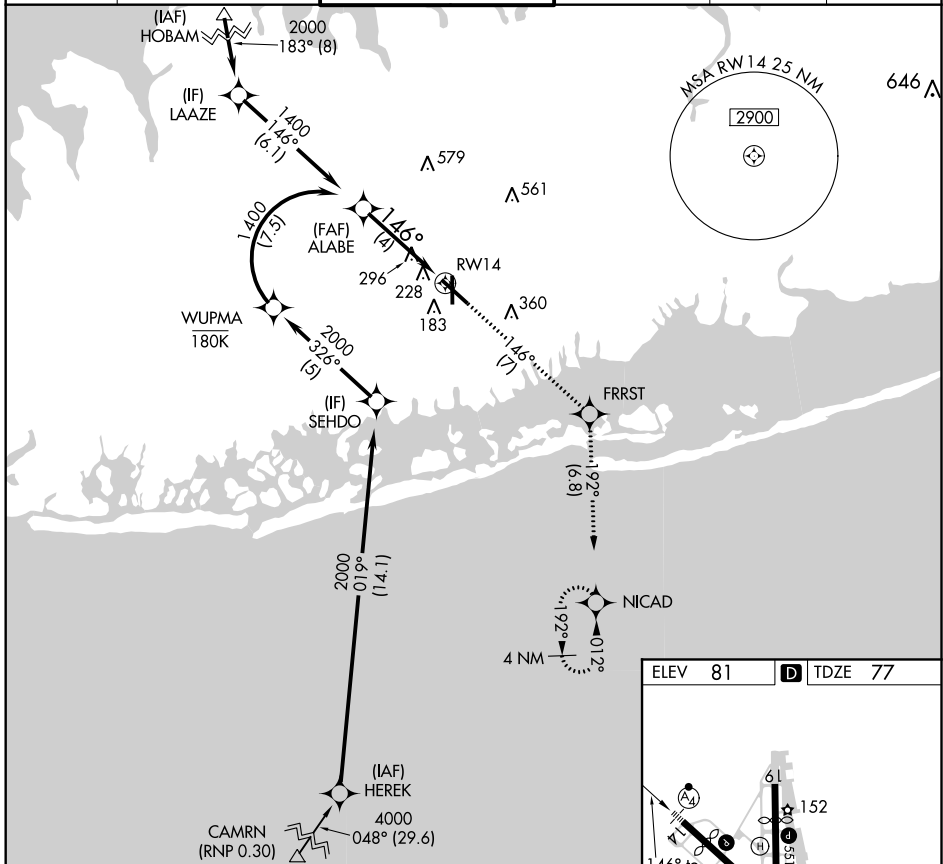
APP CRS	Rwy Idg	<b>6157</b>
<b>146°</b>	TDZE	<b>77</b>
	Apt Elev	<b>81</b>

# RNAV (RNP) Z RWY 14

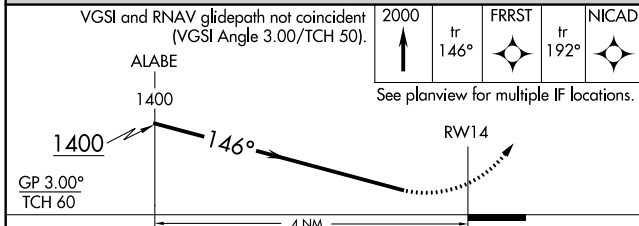
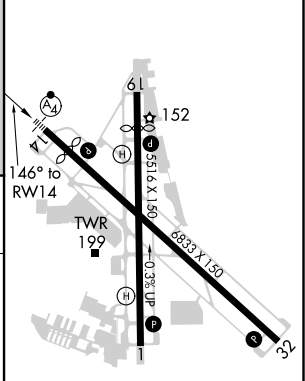
REPUBLIC (F'RG)

RNP AR APCH. RF required from HEREK.		MALSF	MISSED APPROACH: Climb to 2000 on track 146° to FRRST and on track 192° to NICAD and hold.
For uncompensated Baro-VNAV systems, procedure NA below -12°C or above 48°C. For inop ALS, increase all Cats visibility to 1 3/8 SM.			

ATIS	NEW YORK APP CON	REPUBLIC TOWER ★	GND CON	CLNC DEL	UNICOM
<b>126.65</b>	<b>128.125 269.0</b>	<b>118.8 (CTAF) 279.65</b>	<b>121.6 269.6</b>	<b>128.25</b>	<b>122.95</b>



ELEV	<b>81</b>	TDZE	<b>77</b>
------	-----------	------	-----------



CATEGORY	A	B	C	D
RNP 0.30 DA		502-7/8	425 (500-7/8)	

**AUTHORIZATION REQUIRED**

MIRL Rwy 1-19  
 HIRL Rwy 14-32  
 REIL Rwy 1, 19, and 32

NE-2, 10 SEP 2020 to 08 OCT 2020

NE-2, 10 SEP 2020 to 08 OCT 2020