

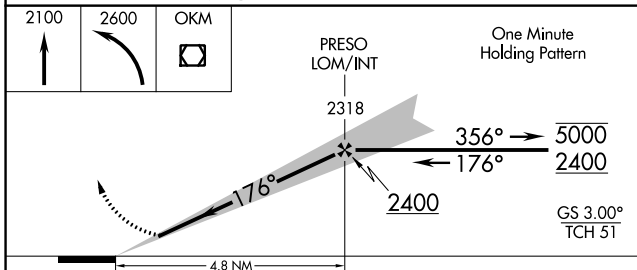
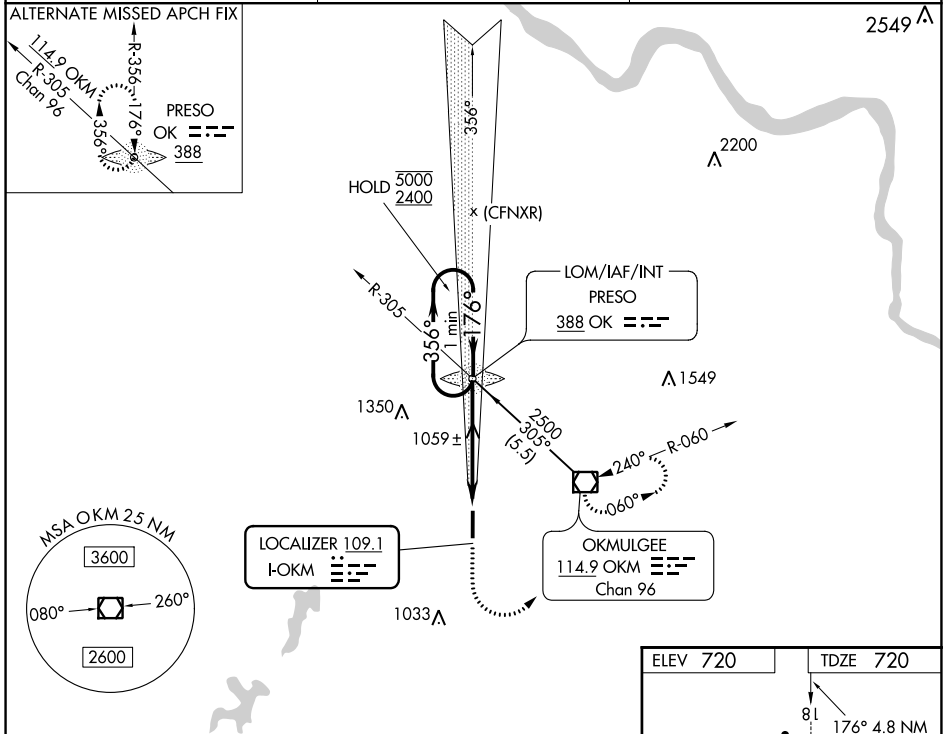
LOC I-OKM 109.1	APP CRS 176°	Rwy Idg 5150
		TDZE 720
		Apt Elev 720

ILS or LOC RWY 18

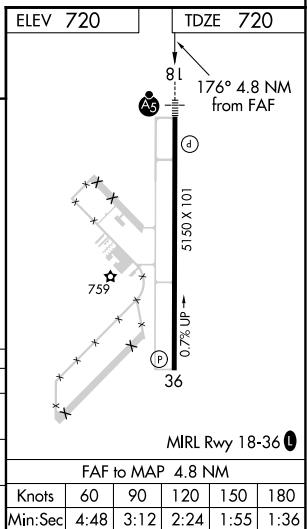
OKMULGEE RGNL (OKM)

NA	MALSR	MISSED APPROACH: Climb to 2100 then climbing left turn to 2600 direct OKM VOR/DME and hold.
----	-------	---

AWOS-3 118.225	TULSA APP CON 119.85 338.3	UNICOM 123.0 (CTAF) 0
--------------------------	--------------------------------------	---------------------------------



CATEGORY	A	B	C	D
S-ILS 18	920-½ 200 (200-½)			NA
S-LOC 18	1320-½ 600 (600-½)		1320-¼ 600 (600-¼)	NA
CIRCLING	1320-1 600 (600-1)	1340-1 620 (700-1)	1340-¾ 620 (700-¾)	NA



SC-1, 10 SEP 2020 to 08 OCT 2020

SC-1, 10 SEP 2020 to 08 OCT 2020