


WAAS CH 82105 W18A	APP CRS 176°	Rwy Idg TDZE Apt Elev	5150 720 720
--	------------------------	-----------------------------	---

RNAV (GPS) RWY 18

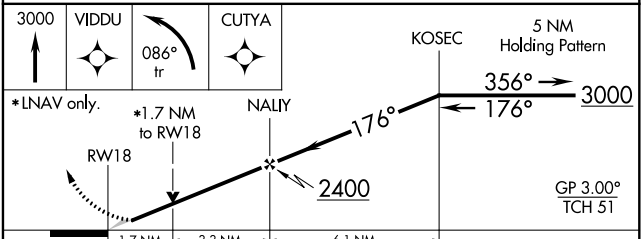
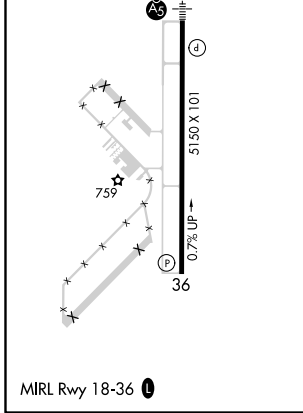
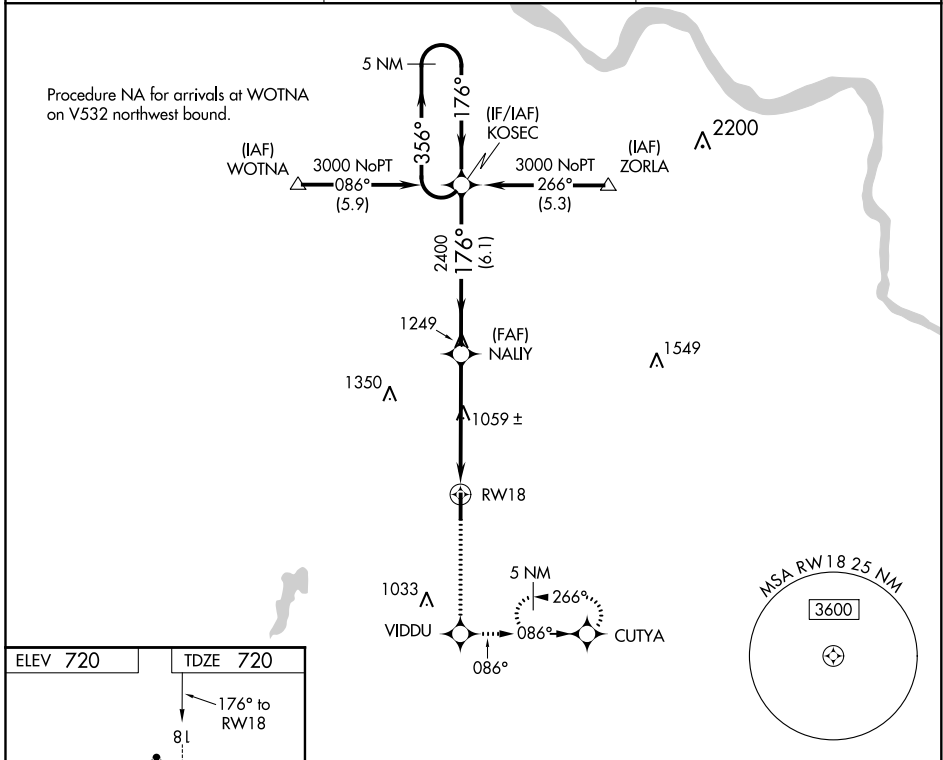
OKMULGEE RGNL (OKM)


⚠ When local altimeter setting not received, use Tulsa Intl altimeter setting: Increase LPV DA to 1050 feet; increase all MDAs 80 feet and visibility Cat C ¼ SM. DME/DME RNP-0.3 NA. VDP NA with Tulsa Intl altimeter setting.

MALSR 

MISSED APPROACH: Climb to 3000 direct VIDDU and left turn via 086° track to CUTYA and hold, continue climb-in-hold to 3000.

AWOS-3 118.225	TULSA APP CON 119.85 338.3	UNICOM 123.0 (CTAF) 0
--------------------------	--------------------------------------	---------------------------------



CATEGORY	A	B	C	D
LPV DA	970-½ 250 (300-½)			NA
LNAV MDA	1320-½ 600 (600-½)		1320-1 600 (600-1)	NA
 CIRCLING	1320-1 600 (600-1)	1340-1 620 (700-1)	1340-1¾ 620 (700-1¾)	NA

SC-1, 10 SEP 2020 to 08 OCT 2020

SC-1, 10 SEP 2020 to 08 OCT 2020