

LOC I-ITH 108.7	APP CRS 325°	Rwy ldg TDZE Apt Elev	6602 1099 1099
---------------------------	------------------------	-----------------------------	---

ILS or LOC RWY 32

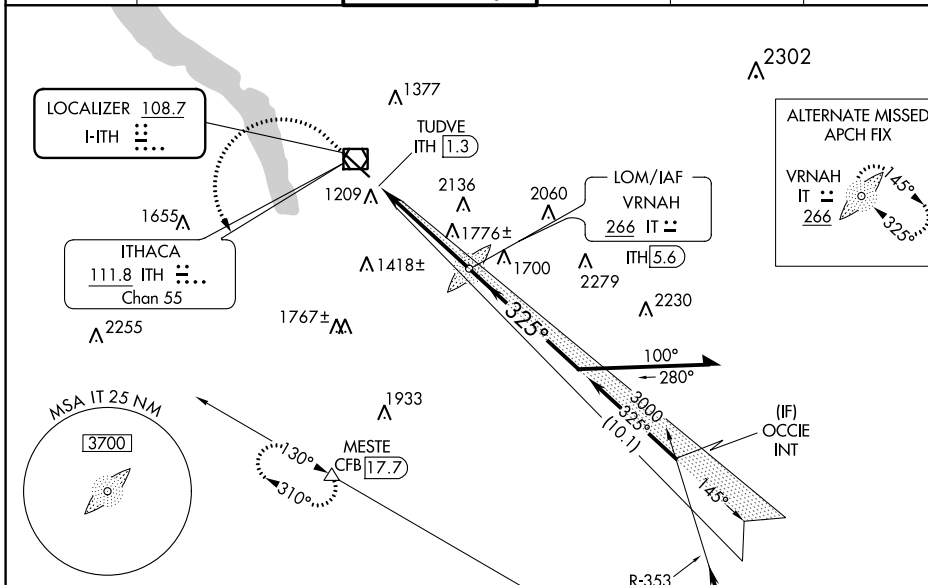
ITHACA TOMPKINS RGNL (ITH)

ADF or DME required for LOC only. DME required.

⚠ Circling NA to Rwy 15 and 33. Inop table does not apply to S-ILS 32. When local altimeter setting not received, use Elmira altimeter setting and increase S-ILS 32 DA to 1433 feet and all MDA 100 feet; increase S-LOC 32 Cat B visibility to RVR 5500 and increase S-LOC Cat C/D visibility 1/2 SM and Circling Cat B/C visibility 1/4 SM. DME from ITH VOR/DME. Simultaneous reception of I-ITH LOC and ITH DME required.

MALSR
MISSED APPROACH:
Climb to 2600 then climbing left turn to 4000 on CFB VOR/DME R-310 to MESTE/CFB VOR/DME 17.7 DME and hold.

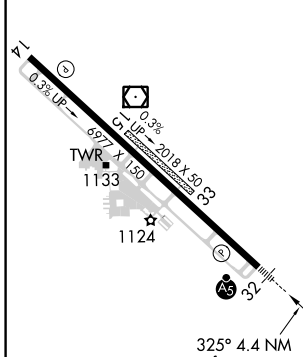
ATIS 125.175	ELMIRA APP CON * 124.3 257.8	ITHACA TOWER * 119.6 (CTAF) 0	GND CON 121.8	CLNC DEL 121.8	UNICOM 122.95
------------------------	--	---	-------------------------	--------------------------	-------------------------



NE-2, 10 SEP 2020 to 08 OCT 2020

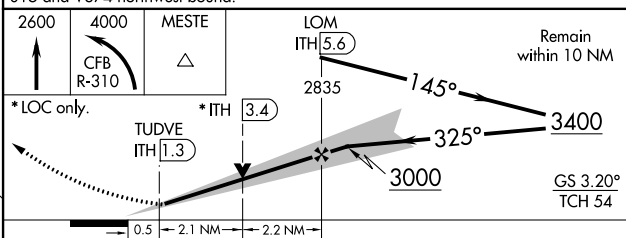
NE-2, 10 SEP 2020 to 08 OCT 2020

ELEV 1099	D	TDZE 1099
-----------	----------	-----------



FAF to MAP 4.4 NM					
Knots	60	90	120	150	180
Min:Sec	4:24	2:56	2:12	1:46	1:28

Procedure NA for arrival on CFB VOR/DME airway radials 275 CW 015 and V374 northwest bound.



CATEGORY	A	B	C	D
S-ILS 32	1349/40 250 (300-3/4)			
S-LOC 32	2040/40	941 (1000-3/4)	2040-2	941 (1000-2)
C CIRCLING	2040-1/4	941 (1000-1/4)	2040-2 3/4	2440-3 941 (1000-2 3/4) 1341 (1400-3)