

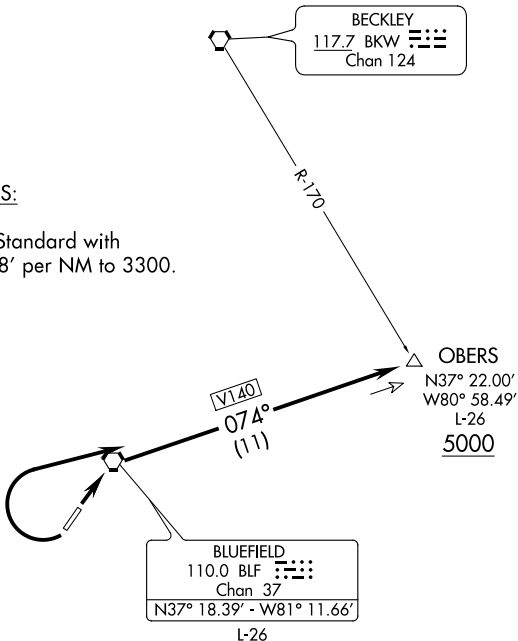
# OBERS FOUR DEPARTURE

INDANAPOLIS CENTER  
126.575 257.85  
CTAF 122.9  
ASOS 132.725

**TOP ALTITUDE:  
ASSIGNED BY ATC**

TAKE-OFF MINIMUMS:

Rwy 5: Standard.  
Rwy 23: 400-2¼ or Standard with  
minimum climb of 238' per NM to 3300.



NOTE: Chart not to scale.



### DEPARTURE ROUTE DESCRIPTION

TAKE-OFF RUNWAY 5: Climb via BLF R-074 to cross OBERS INT at or above 5000' or altitude assigned by ATC. Thence . . . .

TAKE-OFF RUNWAY 23: Climbing right turn via BLF R-074 to cross OBERS INT at or above 5000' or altitude assigned by ATC. Thence . . . .

. . . . via ATC assigned route.

NE-4, 10 SEP 2020 to 08 OCT 2020

NE-4, 10 SEP 2020 to 08 OCT 2020