

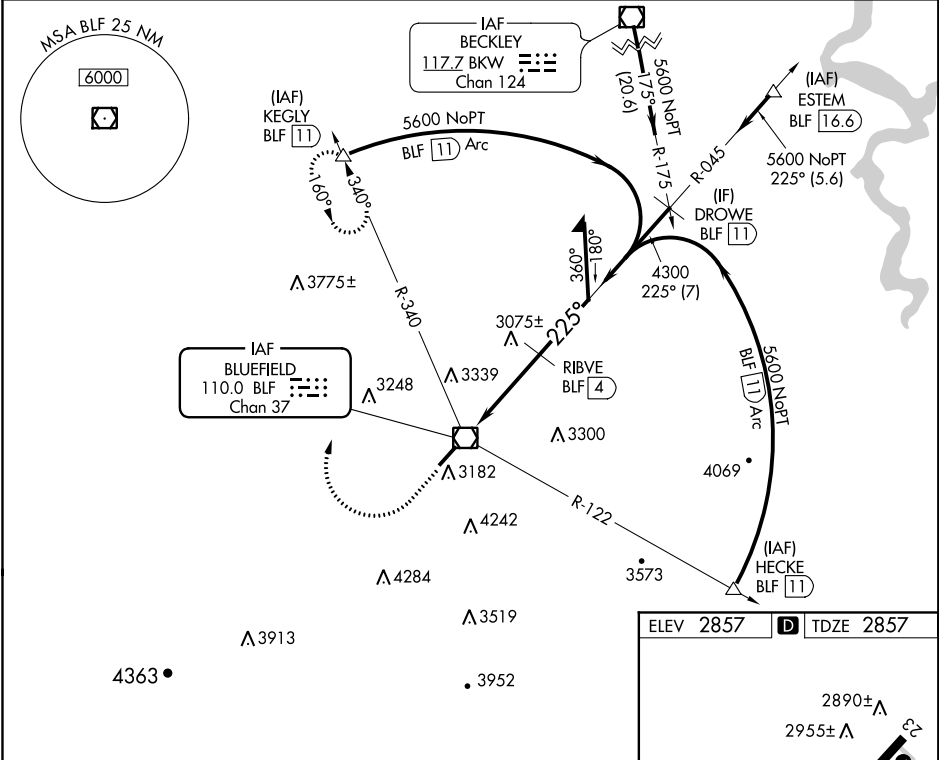
|   |                        |                             |   |
|---|------------------------|-----------------------------|---|
| VOR/DME BLF<br><b>110.0</b><br>Chan <b>37</b> | APP CRS<br><b>225°</b> | Rwy Idg<br>TDZE<br>Apt Elev | <b>4743</b><br><b>2857</b><br><b>2857</b> |
|---|------------------------|-----------------------------|---|

**VOR RWY 23**  
MERCER COUNTY (BLF)

**⚠** DME required. When local altimeter setting not received, use Beckley altimeter setting and increase all MDA 460 feet; increase S-23 visibility Cat A ¼ mile, Cat B ½ mile, Cat C 1 ½ mile, Cat D 1 ¼ mile; increase Circling visibility Cat A ¼ mile, Cat B ½ mile, Cat C 1 mile, Cat D ¾ mile. VDP NA when using Beckley altimeter setting. Circling NA southeast of Rwy 5-23.

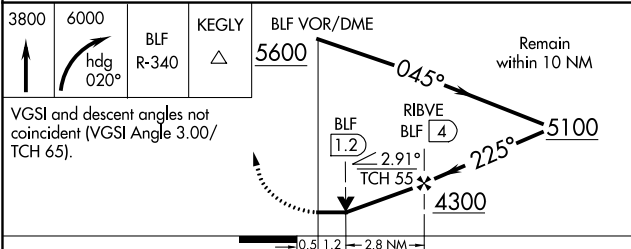
**MISSED APPROACH:** Climb to 3800 then climbing right turn to 6000 on heading 020° and BLF R-340 to KEGLY/BLF 11 DME and hold.

|                        |  |                      |
|------------------------|--|----------------------|
| ASOS<br><b>132.725</b> | INDIANAPOLIS CENTER<br><b>126.575 257.85</b> | CTAF<br><b>122.9</b> |
|------------------------|--|----------------------|

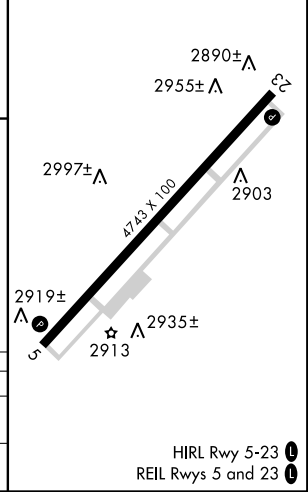


NE-4, 10 SEP 2020 to 08 OCT 2020

NE-4, 10 SEP 2020 to 08 OCT 2020



|           |                    |
|-----------|--------------------|
| ELEV 2857 | <b>D</b> TDZE 2857 |
|-----------|--------------------|



| CATEGORY | A      | B           | C                         | D                         |
|----------|--------|-------------|---------------------------|---------------------------|
| S-23     | 3440-1 | 583 (600-1) | 3440-1 ½<br>583 (600-1 ½) | 3440-1 ¾<br>583 (600-1 ¾) |
| CIRCLING | 3440-1 | 583 (600-1) | 3560-2<br>703 (800-2)     | 3560-2 ¼<br>703 (800-2 ¼) |