

WAAS CH <b>78316</b> <b>W30A</b>	APP CRS <b>303°</b>	Rwy Idg TDZE Apt Elev	<b>6006</b> <b>3169</b> <b>3179</b>
--	------------------------	-----------------------------	---

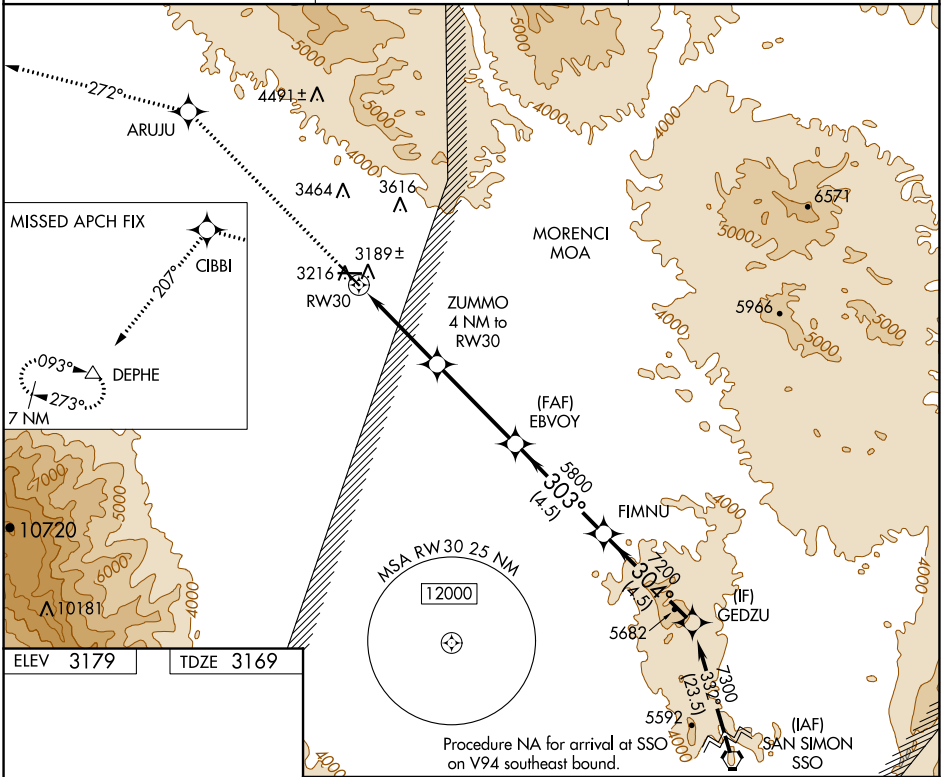
# RNAV (GPS) RWY 30

SAFFORD RGNL (SAD)

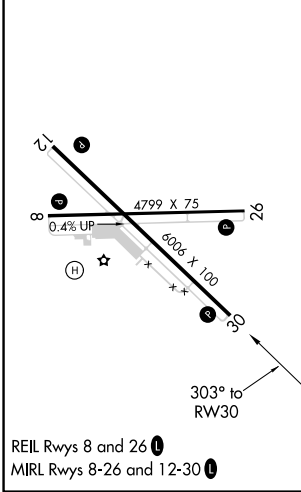
**⚠** For uncompensated Baro-VNAV systems, LNAV/VNAV NA below -21°C (-5°F) or above 54°C (130°F).  
**⚠** DME/DME RNP-0.3 NA. Night landing: Rwy 8 NA.

MISSED APPROACH: Climb to 10000 direct ARUJU and on track 272° to CIBBI and on track 207° to DEPHE and hold.

ASOS <b>124.175</b>	ALBUQUERQUE CENTER <b>134.45 327.15</b>	UNICOM <b>122.8 (CTAF) 0</b>
------------------------	--	---------------------------------



ELEV 3179	TDZE 3169
-----------	-----------



10000	ARUJU	CIBBI	DEPHE	VGSI and RNAV glidepath not coincident (VGSI Angle 3.00/TCH 20).
↑	tr 272°	tr 207°	△	GEDZU
* LNAV only	ZUMMO 4 NM to RW30	EBVOY 5800	FIMNU 7200	7300
	* 2.1 NM to RW30	4480*	5800	Procedure Turn NA GP 3.00° TCH 36
	2.1 NM	1.9 NM	4 NM	4.5 NM
CATEGORY	A	B	C	D
LPV DA	3419-1	250 (300-1)		NA
LNAV/VNAV DA	3854-2½	685 (700-2½)		NA
LNAV MDA	3860-1	691 (700-1)		NA
CIRCLING	3860-1	681 (700-1)		NA

SW-4, 10 SEP 2020 to 08 OCT 2020

SW-4, 10 SEP 2020 to 08 OCT 2020