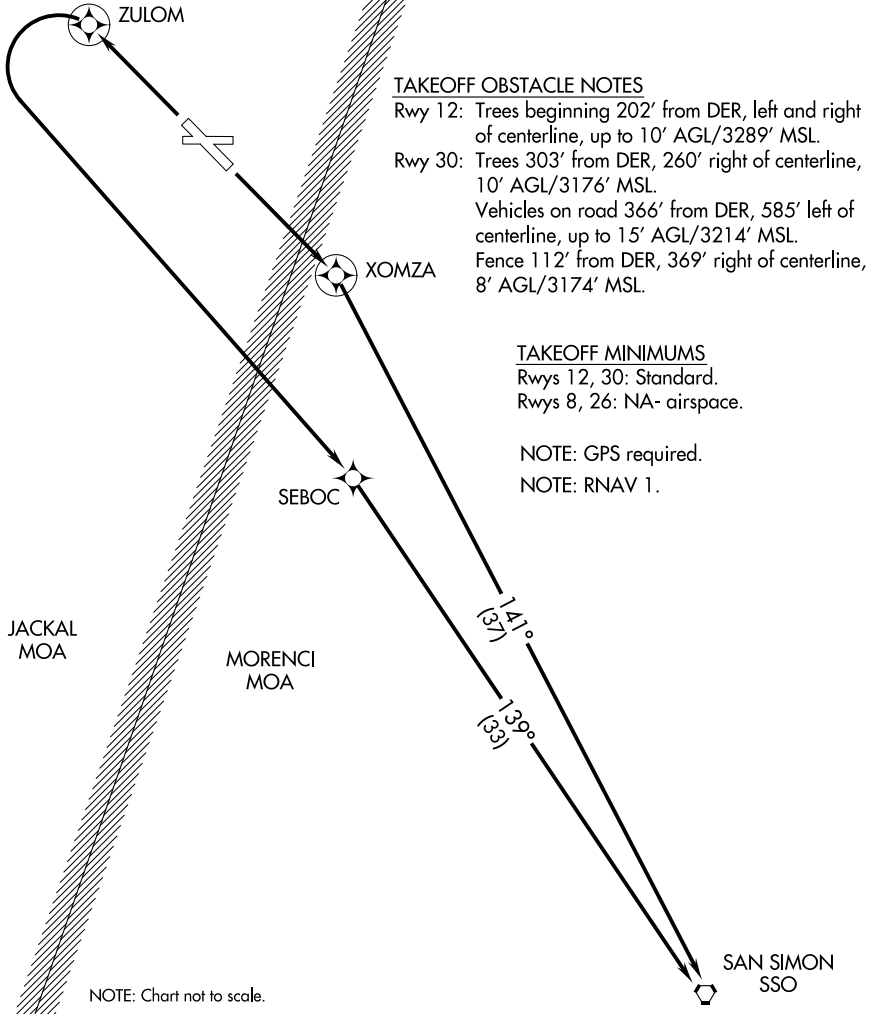


ALBUQUERQUE CENTER  
134.45 327.15



SW-4, 10 SEP 2020 to 08 OCT 2020

SW-4, 10 SEP 2020 to 08 OCT 2020

DEPARTURE ROUTE DESCRIPTION

TAKEOFF RUNWAY 12: Climb direct XOMZA and right turn on track 141° to SSO VORTAC, thence. . . .

TAKEOFF RUNWAY 30: Climb direct ZULOM then climbing left turn direct SEBOC then on track 139° to SSO VORTAC, thence. . . .

. . . .via assigned route, expect clearance to filed altitude 10 minutes after departure.