

APP CRS	Rwy Idg	<b>5000</b>
<b>097°</b>	TDZE	<b>799</b>
	Apt Elev	<b>799</b>

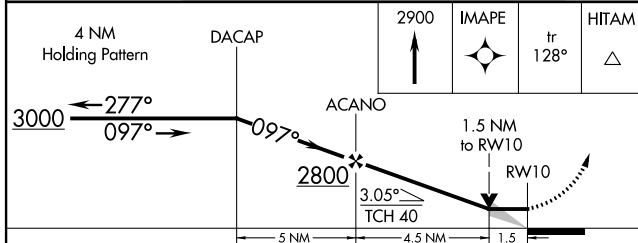
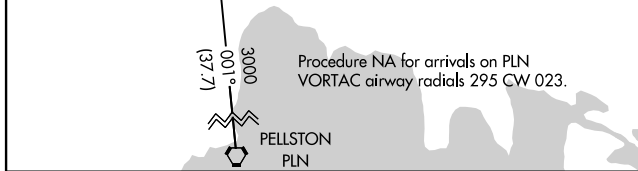
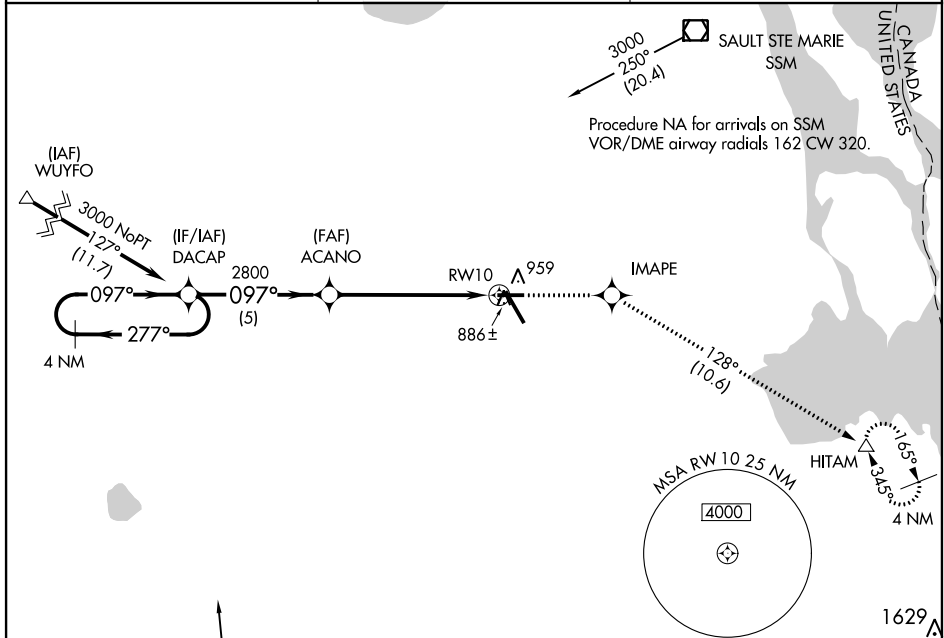
# RNAV (GPS) RWY 10

CHIPPEWA COUNTY INTL (CIU)

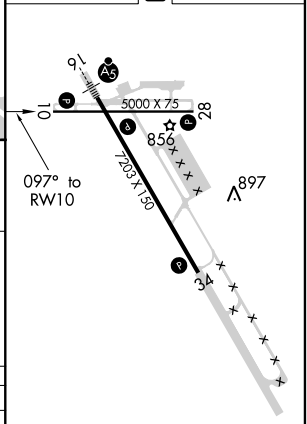
**⚠** DME/DME RNP-0.3 NA, VDP NA with Sault Ste Marie altimeter setting. When local altimeter setting not received, use Sault Ste Marie Muni/Sanderson Field altimeter setting and increase all MDA 60 feet, increase LNAV visibility Cat C/D and Circling Cat C ¼ mile.

**⚠** MISSED APPROACH: Climb to 2900 direct IMAPE and track 128° to HITAM and hold.

AWOS-3PT <b>127.575</b>	TORONTO CENTER <b>132.65 344.5</b>	UNICOM <b>123.0 (CTAF) 0</b>
----------------------------	---------------------------------------	---------------------------------



ELEV 799 **D** TDZE 799



CATEGORY	A	B	C	D
LNAV MDA	1320-1	521 (600-1)	1320-1½	521 (600-1½)
CIRCLING	1320-1	521 (600-1)	1320-1½ 521 (600-1½)	1360 - 2 561 (600-2)

EC-1, 10 SEP 2020 to 08 OCT 2020

EC-1, 10 SEP 2020 to 08 OCT 2020