

RNAV (GPS) RWY 28

CHIPPEWA COUNTY INTL (CIU)

APP CRS 277°	Rwy Idg TDZE Apt Elev	5000 799 799
------------------------	-----------------------------	---

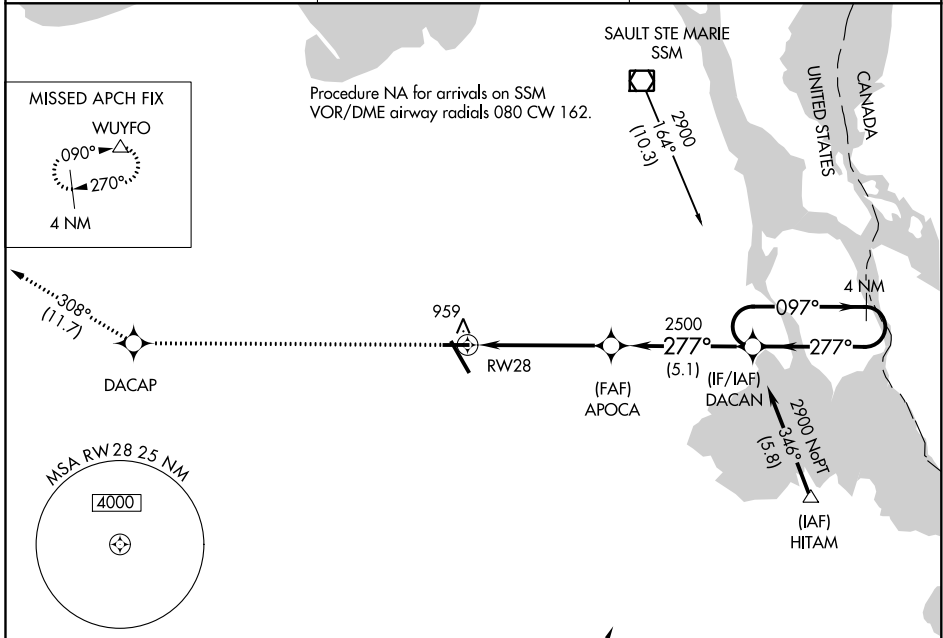
⚠ DME/DME RNP-0.3 NA. Helicopter visibility reduction below ¾ SM NA. When local altimeter setting not received, use Sault Ste Marie Muni/ Sanderson Field altimeter setting and increase all MDA 60 feet, increase LNAV and Circling visibility Cat C/D ¼ mile. Night landing: Rwy 28 NA.

MISSED APPROACH: Climb to 3000 direct DACAP and track 308° to WUYFO and hold.

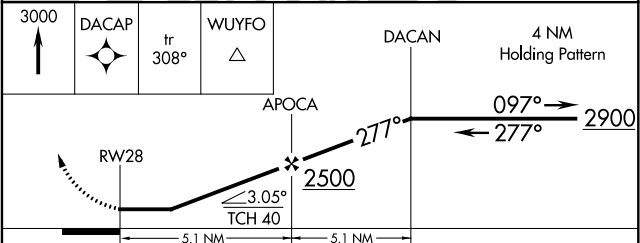
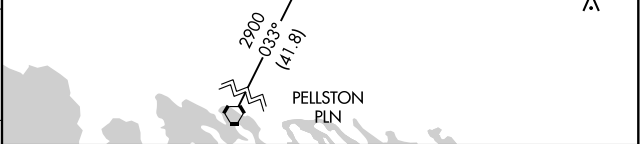
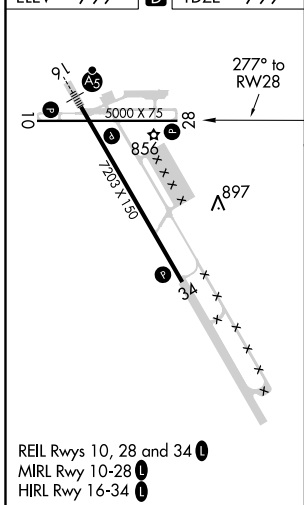
AWOS-3PT
127.575

TORONTO CENTER
132.65 344.5

UNICOM
123.0 (CTAF) 0



ELEV	799	D	TDZE	799
------	-----	----------	------	-----



CATEGORY	A	B	C	D
LNAV MDA	1220-1	421 (500-1)	1220-1½	421 (500-1½)
CIRCLING	1260-1	461 (500-1)	1260-1½ 461 (500-1½)	1360-2 561 (600-2)

EC-1, 10 SEP 2020 to 08 OCT 2020

EC-1, 10 SEP 2020 to 08 OCT 2020