

WAAS CH 87101 W17A	APP CRS 176°	Rwy Idg 8002 TDZE 199 Apt Elev 203
--	------------------------	---

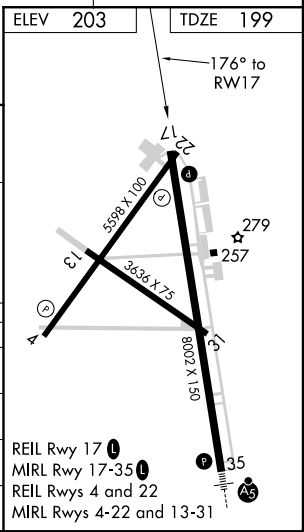
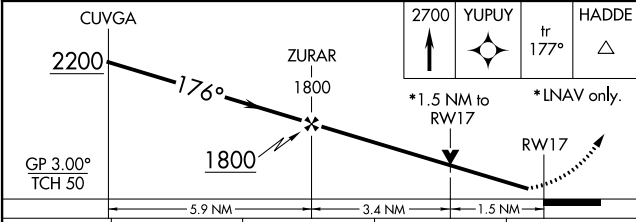
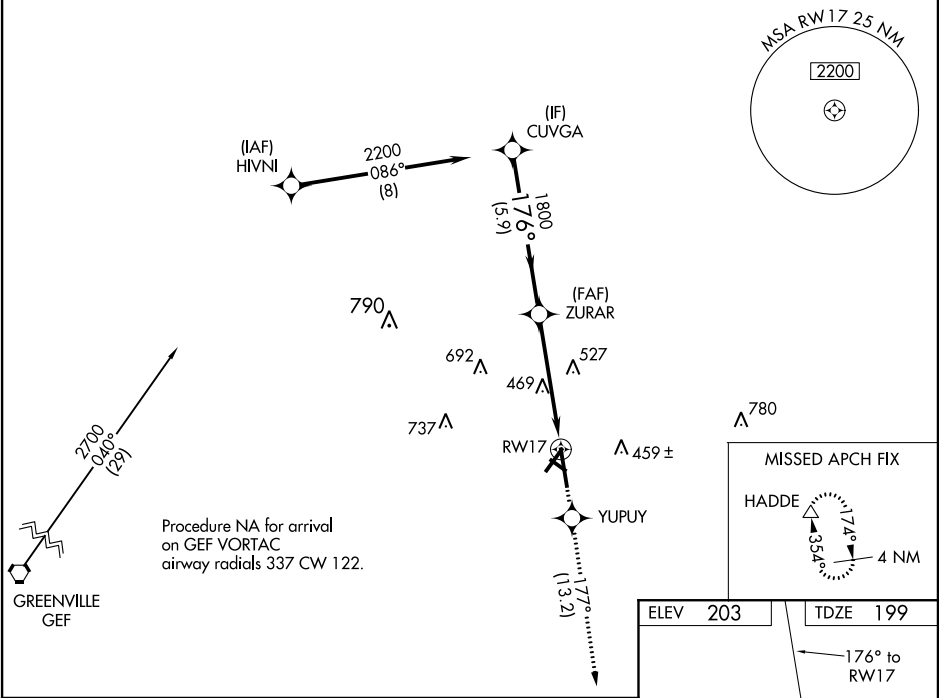
RNAV (GPS) RWY 17

VALDOSTA RGNL (VLD)

▼ For uncompensated Baro-VNAV systems, LNAV/VNAV NA below -6°C (22°F) or above 54°C (130°F).
▲ Circling Rwy 4, 13, 31 NA at night. Rwy 17 helicopter visibility reduction below 3/4 SM NA. DME/DME RNP-0.3 NA. When local altimeter setting not received, use Moultrie altimeter setting: increase LPV DA to 542 feet and all visibilities 3/8 SM; increase LNAV/VNAV DA to 546 and all visibilities 1/4 SM; increase all MDA 100 feet and visibility Cat C and D 1/4 SM. Baro-VNAV and VDP NA when using Moultrie altimeter setting.

MISSED APPROACH:
 Climb to 2700 direct YUPUY and on track 177° to HADDE and hold.

ASOS 126.225	VALDOSTA APP CON* 126.6 285.6	VALDOSTA TOWER* 120.9 (CTAF) 0	GND CON 121.7	UNICOM 122.95
------------------------	---	--	-------------------------	-------------------------



CATEGORY	A	B	C	D
LPV DA		454-3/4	255 (300-3/4)	
LNAV/VNAV DA		458-7/8	259 (300-7/8)	
LNAV MDA	720-1	521 (600-1)	720-1 1/2	521 (600-1 1/2)
CIRCLING	720-1	517 (600-1)	720-1 1/2	780-2 577 (600-2)

SE-4, 10 SEP 2020 to 08 OCT 2020

SE-4, 10 SEP 2020 to 08 OCT 2020