

WAAS CH 86206 W35A	APP CRS 356°	Rwy Idg TDZE Apt Elev	8002 200 203
--	------------------------	-----------------------------	---

RNAV (GPS) RWY 35

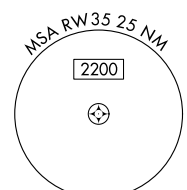
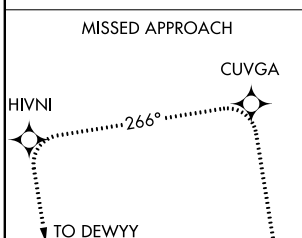
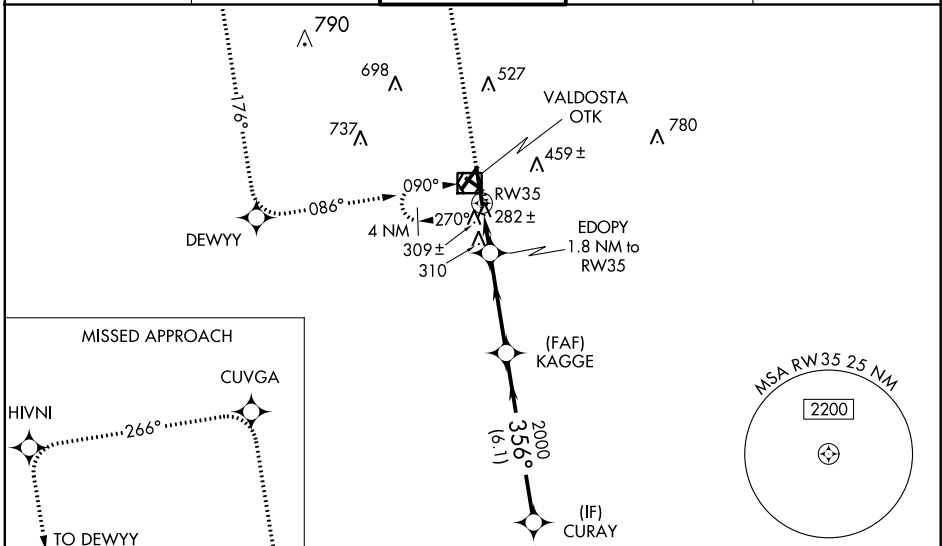
VALDOSTA RGNL (VLD)

Baro-VNAV NA when using Moultrie altimeter setting. For uncompensated Baro-VNAV systems, LNAV/VNAV NA below -15°C (5°F) or above 48°C (118°F). DME/DME RNP-0.3 NA.
 Visibility reduction by helicopters NA. When local altimeter setting not received, use Moultrie altimeter setting and increase all DA 88 feet and all MDA 100 feet and increase LNAV/VNAV all Cats and Circling Cat D visibility ¼ mile. For inoperative MALSRL, increase LPV all Cats visibility to 1 mile, increase LNAV Cats A, B, and C visibility to 1 mile, and increase LNAV Cat D visibility to 1 ½ mile. For inoperative MALSRL when using Moultrie altimeter setting, increase LNAV Cats A and B visibility to 1 mile. VDP NA when using Moultrie altimeter setting. Circling to Rwy 4, 13, and 31 NA at night.

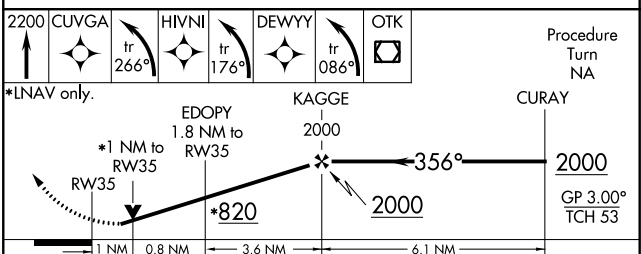
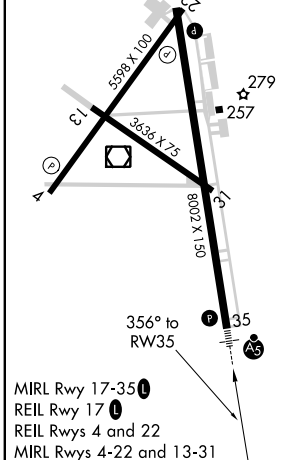
MISSED APPROACH:
 Climb to 2200 direct CUVGA and left turn on track 266° to HIVNI and left turn on track 176° to DEWVY left turn on track 086° to OTK VOR/DME and hold.



ASOS 126.225	VALDOSTA APP CON * 126.6 285.6	VALDOSTA TOWER * 120.9 (CTAF) 0	GND CON 121.7	UNICOM 122.95
------------------------	--	---	-------------------------	-------------------------



ELEV 203	TDZE 200
----------	----------



CATEGORY	A	B	C	D
LPV DA	489-¾ 289 (300-¾)			
LNAV/ VNAV DA	609-1 409 (500-1)			
LNAV MDA	560-¾ 360 (400-¾)		560-1 360 (400-1)	
CIRCLING	640-1 437 (500-1)	660-1 457 (500-1)	660-1½ 457 (500-1½)	780-2 577 (600-2)

SE-4, 10 SEP 2020 to 08 OCT 2020

SE-4, 10 SEP 2020 to 08 OCT 2020