

APP CRS	Rwy Idg	5598
041°	TDZE	202
	Apt Elev	203

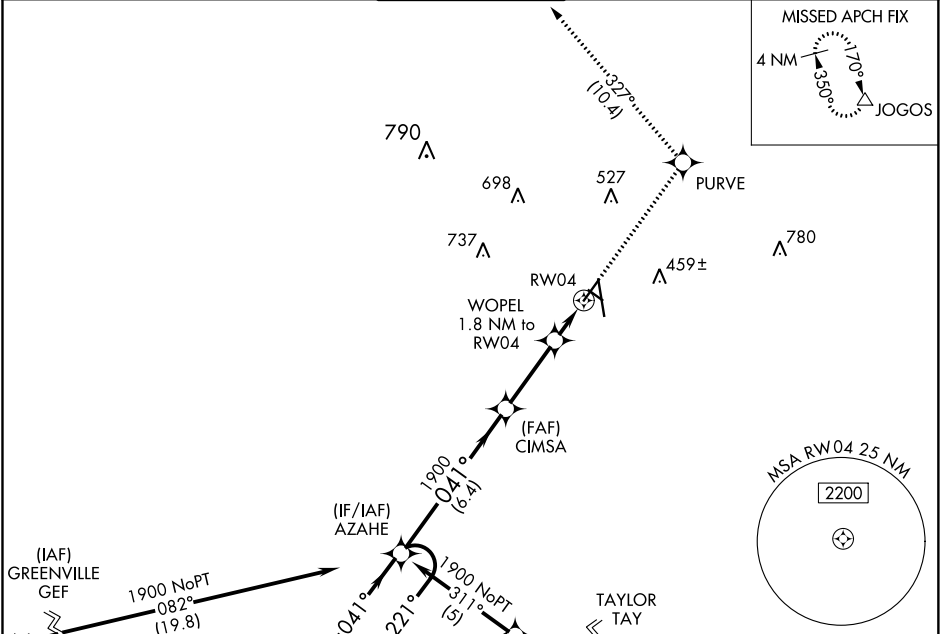
RNAV (GPS) RWY 4

VALDOSTA RGNL (VLD)

⚠ Rwy 4 helicopter visibility reduction below 1 SM NA. DME/DME RNP-0.3 NA. When local altimeter setting not received, use Moultrie altimeter setting and increase all MDA 100 feet and LNAV Cat C and D visibility $\frac{3}{8}$ SM, Circling Cat D $\frac{1}{4}$ SM. Straight-in Rwy 4 NA at night, Circling Rwy 4, 13, 31 NA at night.

MISSED APPROACH: Climb to 3000 direct PURVE and on track 327° to JOGOS and hold.

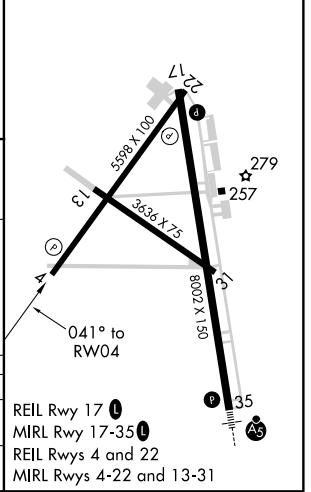
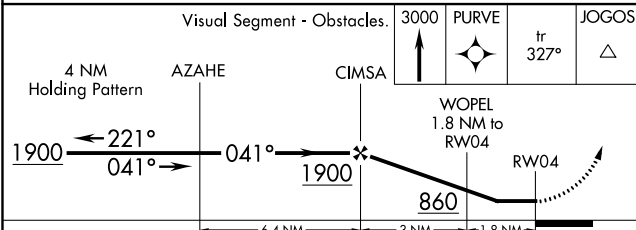
ASOS 126.225	VALDOSTA APP CON * 126.6 285.6	VALDOSTA TOWER * 120.9 (CTAF)	GND CON 121.7	UNICOM 122.95
------------------------	--	---	-------------------------	-------------------------



(IAF) GREENVILLE GEF
1900 NoPT 082° (19.8)

Procedure NA for arrival on GEF VORTAC airway radials 091 CW 145.

ELEV	203	TDZE	202
------	-----	------	-----



CATEGORY	A	B	C	D
LNAV MDA	560-1 358 (400-1)			
CIRCLING	640-1 437 (500-1)	660-1 457 (500-1)	660-1½ 457 (500-1½)	780-2 577 (600-2)

REIL Rwy 17
MIRL Rwy 17-35
REIL Rws 4 and 22
MIRL Rws 4-22 and 13-31

SE-4, 10 SEP 2020 to 08 OCT 2020

SE-4, 10 SEP 2020 to 08 OCT 2020