

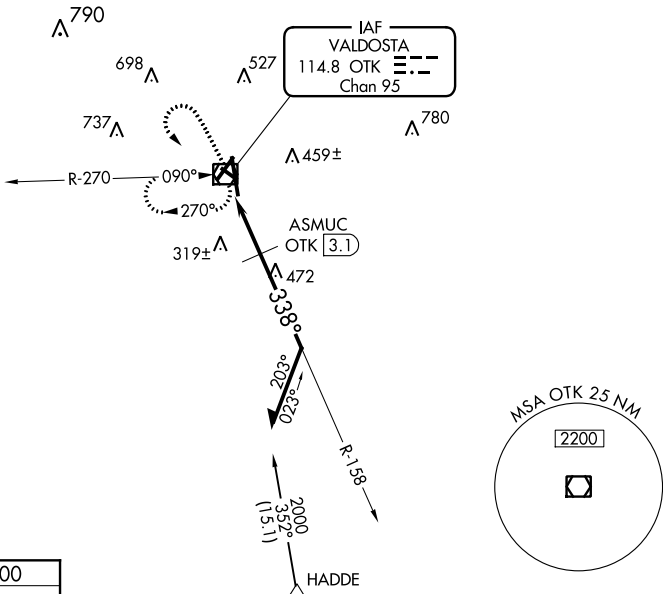
VOR/DME OTK 114.8 Chan 95	APP CRS 338°	Rwy Idg 8002 TDZE 200 Apt Elev 203
-----------------------------------------------	------------------------	---------------------------------------------------------------

VOR RWY 35
VALDOSTA RGNL (VLD)

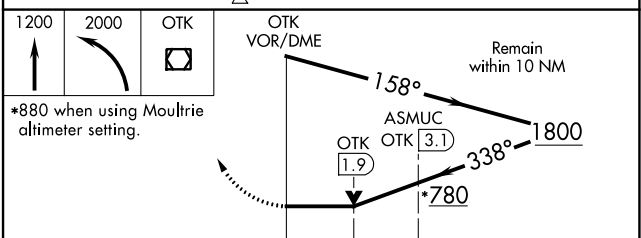
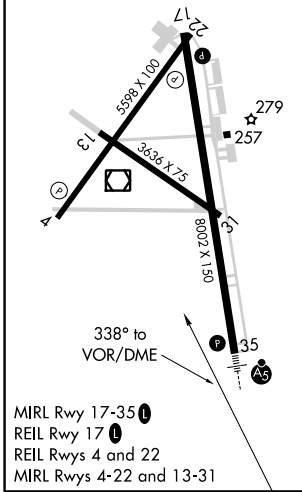
For inop ALS, increase S-35 Cats A/B visibility to 1 SM. ASMUC FIX MINIMUMS: Increase S-35 Cats A/B/C visibility to 1 SM and Cat D to 1¼ SM. Rwy 35 helicopter visibility reduction below ¾ SM NA. VDP NA with Moultrie altimeter setting. When local altimeter setting not received, use Moultrie altimeter setting and increase all MDAs 100 feet and increase all Cat C/D visibilities ½ SM. Circling Rwy 4, 13, 31 NA at night.

MALSRL
MISSED APPROACH: Climb to 1200 then climbing left turn to 2000 direct OTK VOR/DME and hold, continue climb-in-hold to 2000.

ASOS 126.225	VALDOSTA APP CON * 126.6 285.6	VALDOSTA TOWER * 120.9 (CTAF)	GND CON 121.7	UNICOM 122.95
------------------------	------------------------------------------	-----------------------------------------	-------------------------	-------------------------



ELEV 203	TDZE 200
----------	----------



CATEGORY	A	B	C	D
S-35	780-¾	580 (600-¾)	780-1 580 (600-1)	780-1¼ 580 (600-1¼)
CIRCLING	780-1	577 (600-1)	780-1½ 577 (600-1½)	780-2 577 (600-2)
ASMUC FIX MINIMUMS				
S-35		580-¾ 380 (400-¾)		580-1 380 (400-1)
CIRCLING	640-1 437 (500-1)	660-1 457 (500-1)	660-1½ 457 (500-1½)	780-2 577 (600-2)

SE-4, 10 SEP 2020 to 08 OCT 2020

SE-4, 10 SEP 2020 to 08 OCT 2020