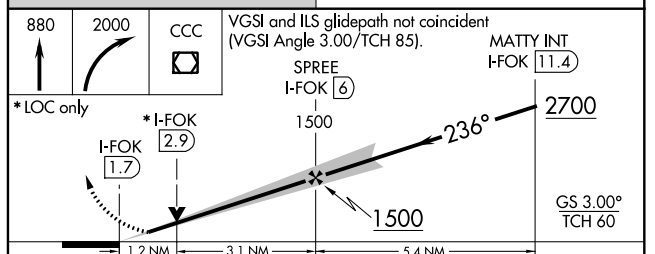
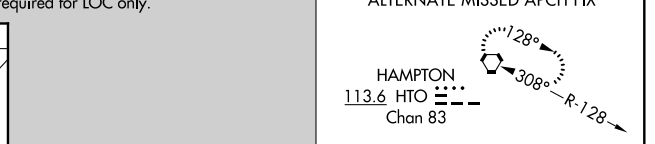
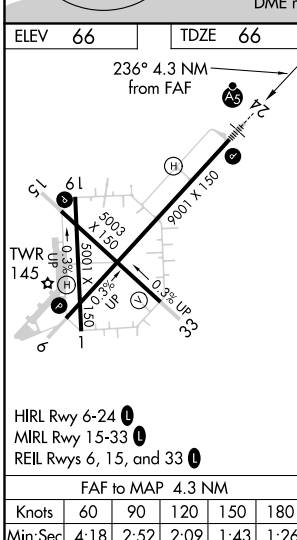
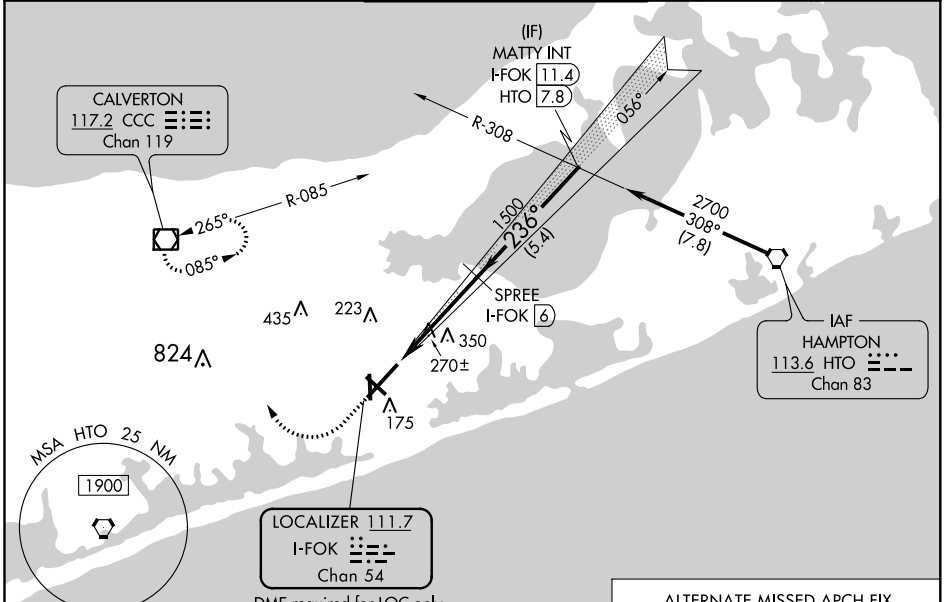


LOC/DME I-FOK <b>111.7</b> Chan <b>54</b>	APP CRS <b>236°</b>	Rwy Idg TDZE Apt Elev	<b>9001</b> <b>66</b> <b>66</b>
---	------------------------	-----------------------------	---------------------------------------

# ILS or LOC RWY 24

FRANCIS S GABRESKI (FOK)

<p>Circling Rwy 15 NA at night.</p>	<p>MALS R</p>	<p>MISSED APPROACH: Climb to 880 then climbing right turn to 2000 direct CCC VOR/DME and hold.</p>		
		ASOS <b>119.925</b>	NEW YORK APP CON <b>125.975 343.65</b>	SUFFOLK COUNTY TOWER ★ <b>125.3</b> (CTAF) <b>236.6</b>



CATEGORY	A	B	C	D
S-ILS 24	266-½ 200 (200-½)			
S-LOC 24	520-½	454 (500-½)	520-¾	454 (500-¾)
CIRCLING	600-1 534 (600-1)	620-1 554 (600-1)	700-1¾ 634 (700-1¾)	740-2¼ 674 (700-2¼)

NE-2, 10 SEP 2020 to 08 OCT 2020

NE-2, 10 SEP 2020 to 08 OCT 2020