

WAAS CH 40009 W24A	APP CRS 236°	Rwy Idg TDZE Apt Elev	9001 66 66
--	------------------------	-----------------------------	---------------------------------------

RNAV (GPS) RWY 24

FRANCIS S GABRESKI (FOK)

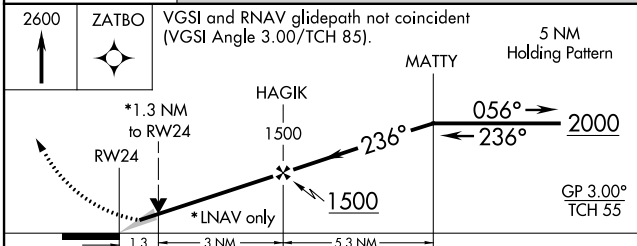
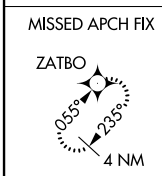
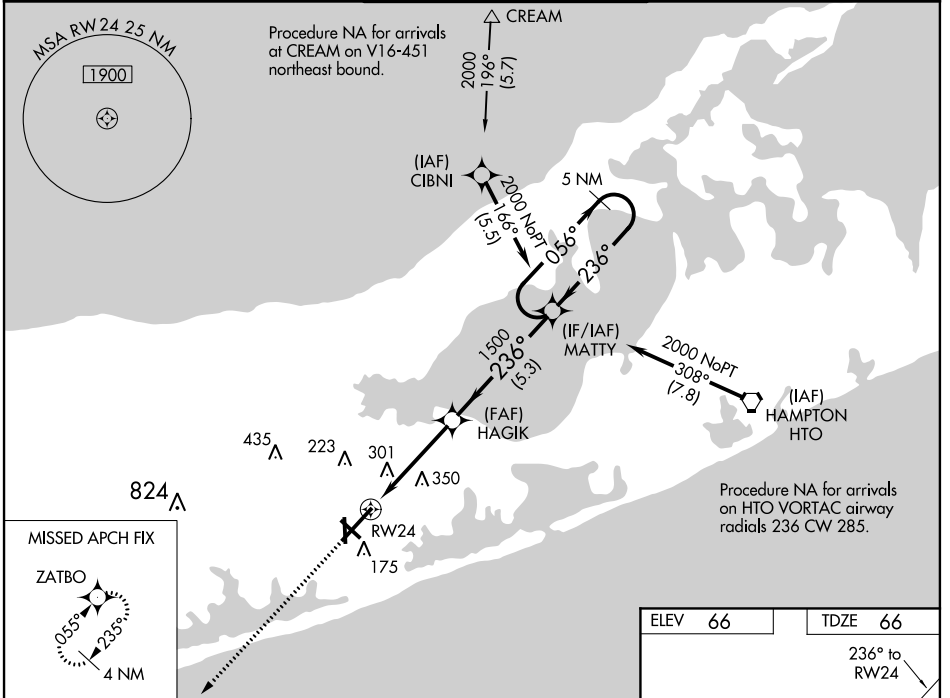
For uncompensated Baro-VNAV systems, LNAV/VNAV NA below -15°C (5°F) or above 43°C (109°F). DME/DME RNP-0.3 NA. When local altimeter setting not received, use Shirley altimeter setting: increase LPV DA to 293; increase LNAV/VNAV DA to 632 and LNAV/VNAV all Cats visibility 1/8 mile; increase all MDA 40 feet and Circling Cat D visibility 1/4 mile. Baro-VNAV and VDP NA when using Shirley altimeter setting. Circling Rwy 15 NA at night.

MALSR

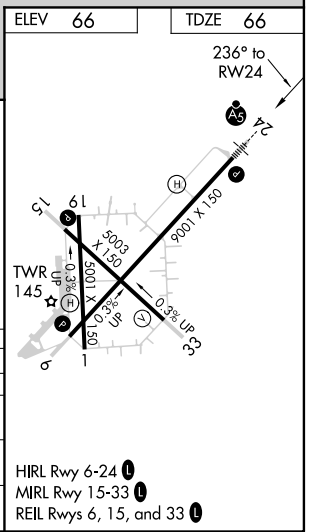


MISSED APPROACH:
Climb to 2600 direct ZATBO and hold.

ASOS 119,925	NEW YORK APP CON 125,975 343,65	SUFFOLK COUNTY TOWER * 125.3 (CTAF) 236.6	GND CON 121.8 225.4	UNICOM 122.95
------------------------	---	---	-------------------------------	-------------------------



CATEGORY	A	B	C	D
LPV DA		266-1/2	200 (200-1/2)	
LNAV/VNAV DA		605-1 3/8	539 (600-1 3/8)	
LNAV MDA	560-1/2 494 (500-1/2)		560-1 494 (500-1)	
CIRCLING	600-1 534 (600-1)	620-1 554 (600-1)	620-1 1/2 554 (600-1 1/2)	700-2 634 (700-2)



NE-2, 10 SEP 2020 to 08 OCT 2020

NE-2, 10 SEP 2020 to 08 OCT 2020