

WAAS CH 81822 W06A	APP CRS 055°	Rwy ldg TDZE Apt Elev	9001 57 66
--	------------------------	-----------------------------	---------------------------------------

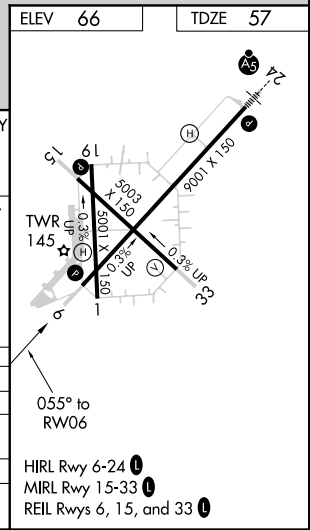
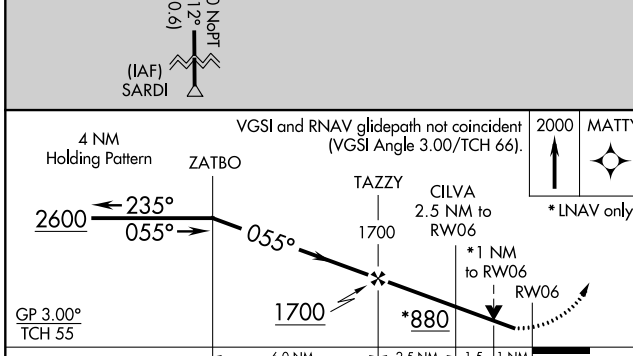
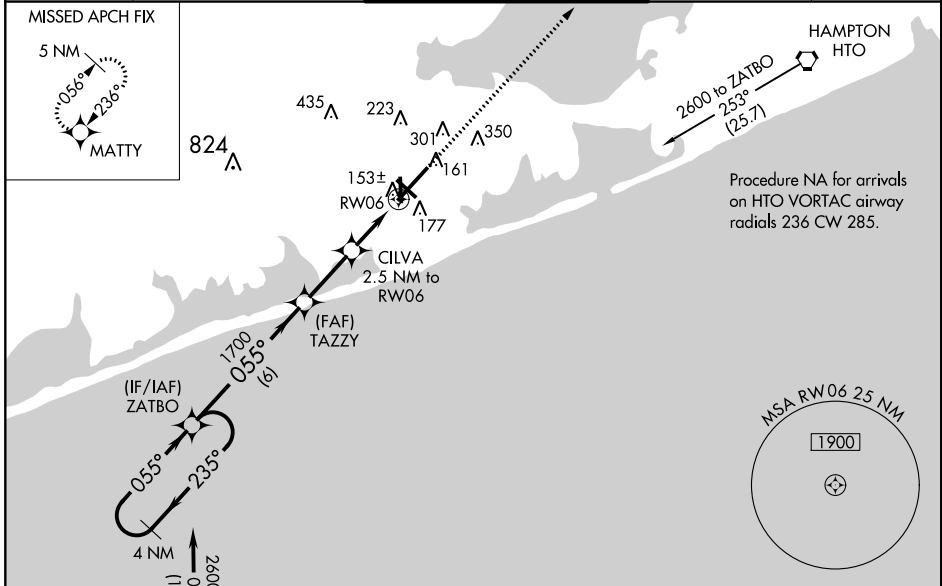
RNAV (GPS) RWY 6

FRANCIS S GABRESKI (F^OK)

⚠ Helicopter visibility reduction below ¾ SM not authorized. For uncompensated Baro-VNAV systems, LNAV/VNAV NA below -15°C (5°F) or above 43°C (109°F). DME/DME RNP-0.3 NA. When local altimeter setting not received, use Shirley altimeter setting: increase LPV DA to 325 and all Cats visibility ½ mile; increase LNAV/VNAV DA to 361 and all Cats visibility ½ mile; increase all MDA 40 feet and LNAV cats C/D visibility ½ mile and Circling Cat D visibility ¼ mile. Baro-VNAV and VDP NA when using Shirley altimeter setting. Circling Rwy 15 NA at night.

MISSED APPROACH:
Climb to 2000 direct MATTY and hold.

ASOS 119.925	NEW YORK APP CON 125.975 343.65	SUFFOLK COUNTY TOWER ★ 125.3 (CTAF) 0 236.6	GND CON 121.8 225.4	UNICOM 122.95
------------------------	---	---	-------------------------------	-------------------------



CATEGORY	A	B	C	D
LPV DA		307-¾	250 (300-¾)	
LNAV/VNAV DA		343-⅞	286 (300-⅞)	
LNAV MDA		420-1	363 (400-1)	
CIRCLING	600-1 534 (600-1)	620-1 554 (600-1)	620-1½ 554 (600-1½)	700-2 634 (700-2)

NE-2, 10 SEP 2020 to 08 OCT 2020

NE-2, 10 SEP 2020 to 08 OCT 2020