

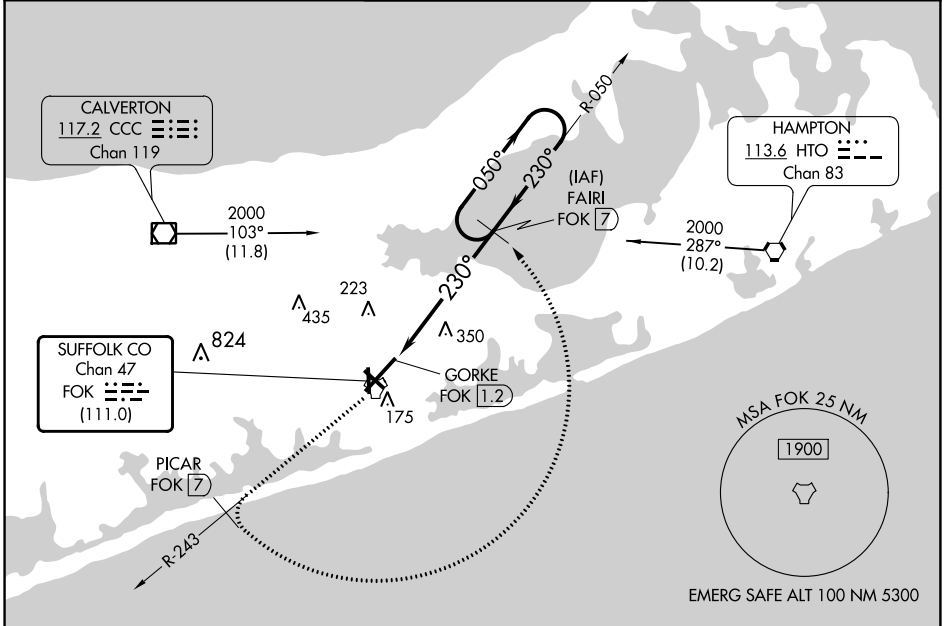
TACAN FOK Chan 47 (111.0)	APP CRS 230°	Rwy Idg TDZE Apt Elev	9001 66 66
---------------------------------	-----------------	-----------------------------	------------------

TACAN RWY 24

FRANCIS S GABRESKI (FOK)

<p>V VDP NA with Shirley altimeter setting. When local altimeter setting not received, use Shirley altimeter setting and increase all MDA 40 feet and S-24 Cats C/D visibility to 1 1/8 mile and Circling Cat D visibility to 2 1/4 miles. Circling Rwy 15 NA at night.</p>	<p>MALSR</p>	<p>MISSED APPROACH: Climb to 2000 on FOK TACAN R-243 to PICAR/7 DME then arc CCW to FAIRI/7 DME and hold.</p>
--	---------------------	--

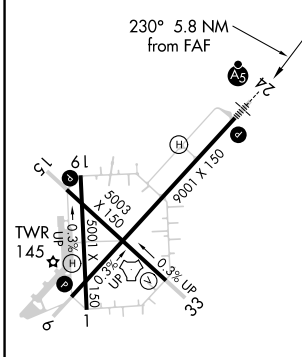
ASOS 119.925	NEW YORK APP CON 125.975 343.65	SUFFOLK COUNTY TOWER ★ 125.3 (CTAF) 236.6	GND CON 121.8 225.4	UNICOM 122.95
------------------------	---	---	-------------------------------	-------------------------



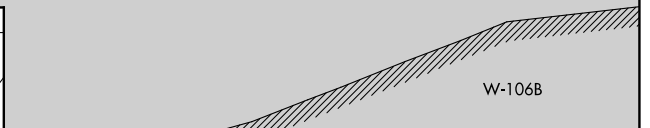
NE-2, 10 SEP 2020 to 08 OCT 2020

NE-2, 10 SEP 2020 to 08 OCT 2020

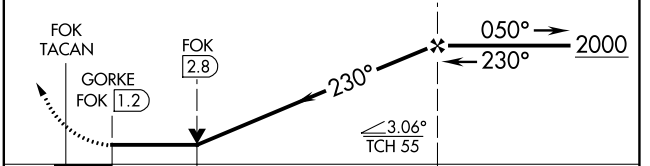
ELEV 66	TDZE 66
---------	---------



HIRL Rwy 6-24	MIRL Rwy 15-33	REIL Rwy 6, 15, and 33
---------------	----------------	------------------------



2000 ↑ FOK R-243	PICAR FOK 7	Arc CCW	FAIRI FOK 7	VGSI and descent angles not coincident (VGSI Angle 3.00/TCH 85).
------------------------	----------------	------------	----------------	---



CATEGORY	A	B	C	D
S-24	660-1/2 594 (600-1/2)		660-1 1/4 594 (600-1 1/4)	
CIRCLING	660-1 594 (600-1)		660-1 3/4 594 (600-1 3/4)	700-2 634 (700-2)