

TACAN FOK Chan <b>47</b> (111.0)	APP CRS <b>063°</b>	Rwy Idg TDZE <b>57</b> Apt Elev <b>66</b>	<b>9001</b>
--	------------------------	---	-------------

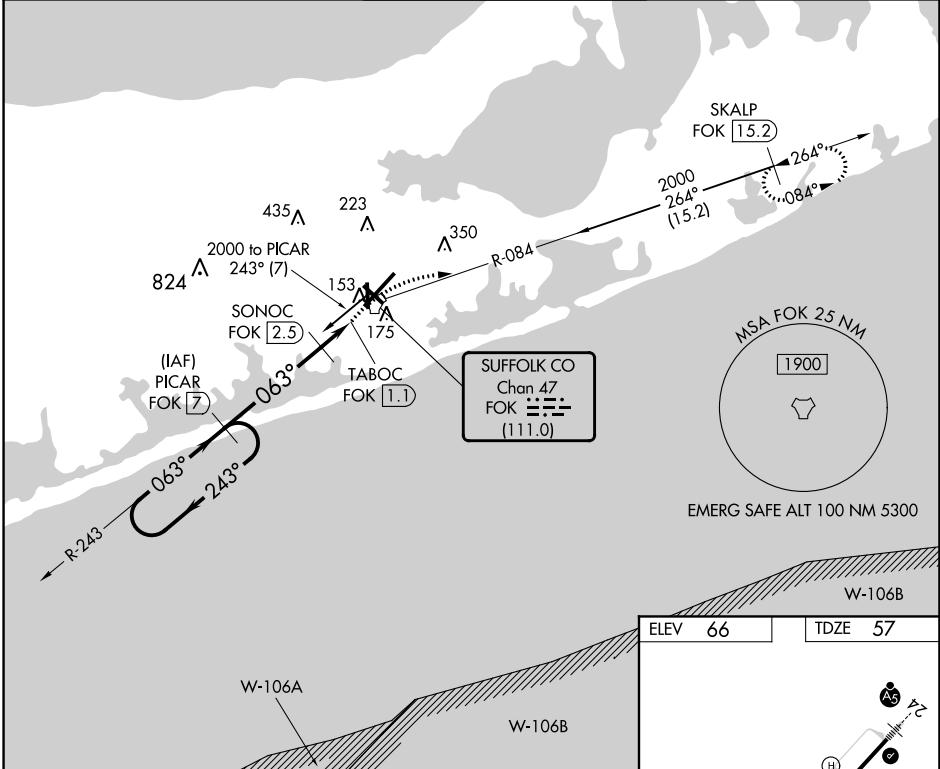
# TACAN RWY 6

FRANCIS S GABRESKI (FOK)

**⚠** Helicopter visibility reduction below 3/4 SM not authorized. When local altimeter setting not received, use Shirley altimeter setting and increase all MDA 40 feet and S-6 Cats C/D visibility to 1 1/2 miles and Circling Cat D visibility to 2 1/4 miles. Circling Rwy 15 NA at night.

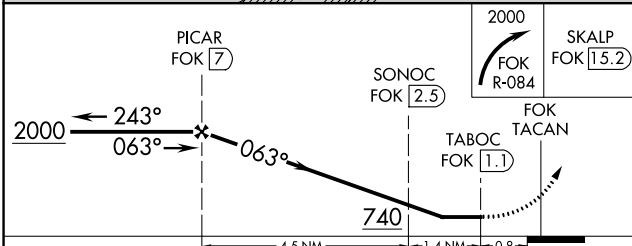
**MISSED APPROACH:** Climbing right turn to 2000 on FOK TACAN R-084 to SKALP/15.2 DME and hold.

ASOS <b>119.925</b>	NEW YORK APP CON <b>125.975 343.65</b>	SUFFOLK COUNTY TOWER ★ <b>125.3</b> (CTAF) <b>236.6</b>	GND CON <b>121.8 225.4</b>	UNICOM <b>122.95</b>
------------------------	---	--	-------------------------------	-------------------------



NE-2, 10 SEP 2020 to 08 OCT 2020

NE-2, 10 SEP 2020 to 08 OCT 2020



ELEV <b>66</b>	TDZE <b>57</b>
----------------	----------------

Approach diagram details:
 

- Altitudes: 145, 61, 5002, 9001, 33
- Angles: 0.3% UP, 0.3% UP, 0.3% UP
- Navigation points: TWR 145, SKALP (15.2), TABOC (1.1)
- Distances: 1.5, 6.1, 3.0, 1.5

HIRL Rwy 6-24 <b>1</b>
MIRL Rwy 15-33 <b>1</b>
REL Rws 6, 15, and 33 <b>1</b>

CATEGORY	A	B	C	D
S-6		420-1	363 (400-1)	
CIRCLING	600-1 534 (600-1)	620-1 554 (600-1)	620-1 1/2 554 (600-1 1/2)	700-2 634 (700-2)