

JUNEAU FIVE DEPARTURE (OBSTACLE)

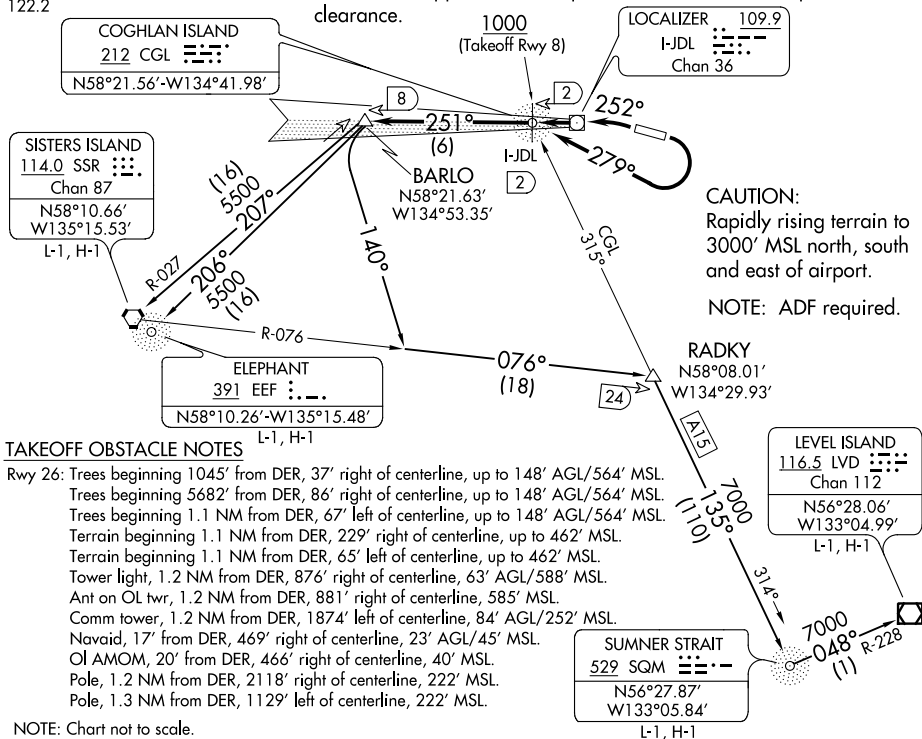
AL-1191 (FAA)

ATIS
135.2
GND CON
121.9
JUNEAU TOWER*
118.7 (CTAF) 278.3
ANCHORAGE CENTER
133.9
JUNEAU RADIO
122.2

TAKEOFF MINIMUMS

Rwy 8: 1000-3 with minimum climb from 1000 as stated per transition.
Rwy 26: Standard with minimum climb of 595' per NM to 800, then as stated per transition, or 600-2 with minimum as stated per transition.

NOTE: SSR/EEF transition: Minimum climb of 330' per NM to 2800.
LVD and SQM transitions: Minimum climb of 385' per NM to 4600'.
NOTE: Obtain ATC approval for this procedure if not issued as part of the IFR clearance.



TAKEOFF OBSTACLE NOTES

Rwy 26: Trees beginning 1045' from DER, 37' right of centerline, up to 148' AGL/564' MSL.
Trees beginning 5682' from DER, 86' right of centerline, up to 148' AGL/564' MSL.
Trees beginning 1.1 NM from DER, 67' left of centerline, up to 148' AGL/564' MSL.
Terrain beginning 1.1 NM from DER, 229' right of centerline, up to 462' MSL.
Terrain beginning 1.1 NM from DER, 65' left of centerline, up to 462' MSL.
Tower light, 1.2 NM from DER, 876' right of centerline, 63' AGL/588' MSL.
Ant on OL twr, 1.2 NM from DER, 881' right of centerline, 585' MSL.
Comm tower, 1.2 NM from DER, 1874' left of centerline, 84' AGL/252' MSL.
Navaid, 17' from DER, 469' right of centerline, 23' AGL/45' MSL.
Ol AMOM, 20' from DER, 466' right of centerline, 40' MSL.
Pole, 1.2 NM from DER, 2118' right of centerline, 222' MSL.
Pole, 1.3 NM from DER, 1129' left of centerline, 222' MSL.

NOTE: Chart not to scale.

DEPARTURE ROUTE DESCRIPTION

TAKEOFF RUNWAY 8: Climbing right turn as soon as practical. Climb in visual conditions direct CGL NDB or heading 279° to I-JDL West course/2 DME (visual conditions must be maintained from takeoff until established over CGL NDB or I-JDL West course/2 DME at or above 1000 MSL), thence. . .

TAKEOFF RUNWAY 26: Climbing left turn heading 252° to CGL NDB or I-JDL West course/2 DME, thence. . .

. . . via I-JDL West course or 251° bearing from CGL NDB to BARLO INT/I-JDL 8 DME, thence via (transition).

LEVEL ISLAND TRANSITION (JNU5.LVD): From over BARLO INT via heading 140° and SSR R-076 to RADKY INT, then via SQM bearing 314° to SQM NDB, then via SQM bearing 048° and LVD R-228 to LVD VOR/DME.

SISTERS ISLAND/ELEPHANT TRANSITION (JNU5.SSR): From over BARLO INT via SSR R-027 to SSR VORTAC, or from over BARLO INT via EEF bearing 026° to EEF NDB.

SUMMER STRAIT TRANSITION (JNU5.SQM): From over BARLO INT via heading 140° and SSR R-076 to RADKY INT, then via SQM bearing 314° to SQM NDB.

JUNEAU FIVE DEPARTURE (OBSTACLE)

AK, 10 SEP 2020 to 05 NOV 2020

AK, 10 SEP 2020 to 05 NOV 2020