

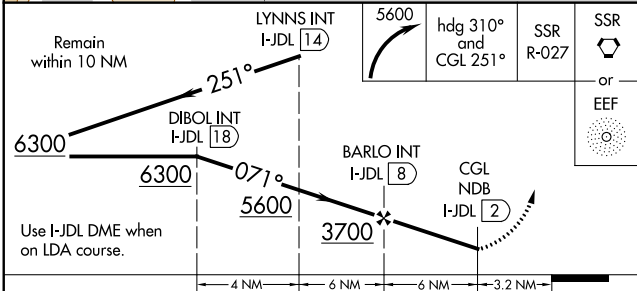
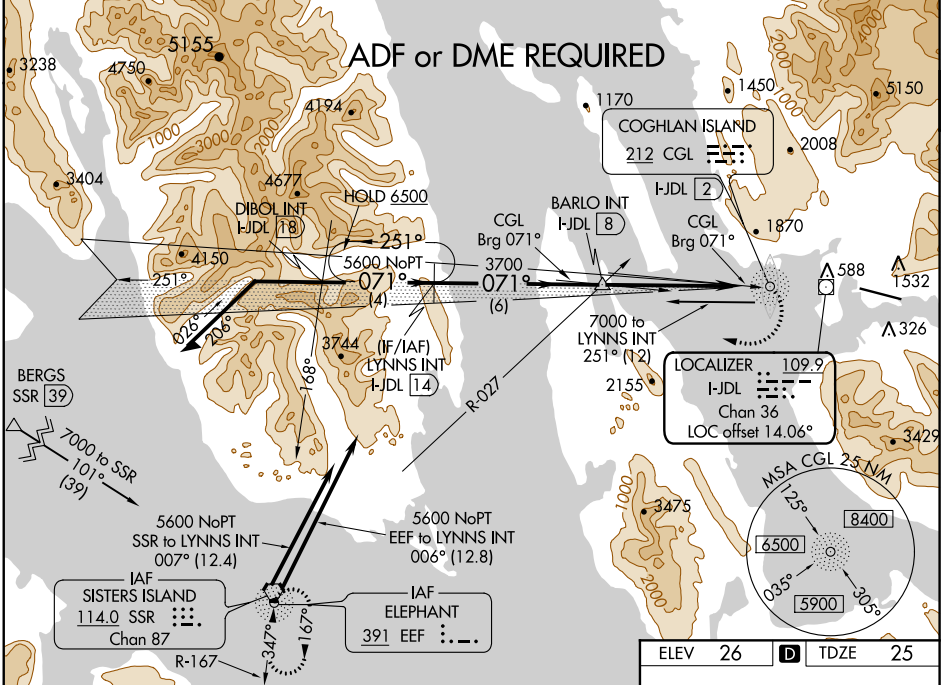
LOC/DME I-JDL <b>109.9</b> Chan <b>36</b>	APP CRS <b>071°</b>	Rwy Idg TDZE <b>25</b> Apt Elev <b>26</b>	<b>8457</b>
---	------------------------	---	-------------

# LDA X RWY 8

JUNEAU INTL (JNU) (PAJN)

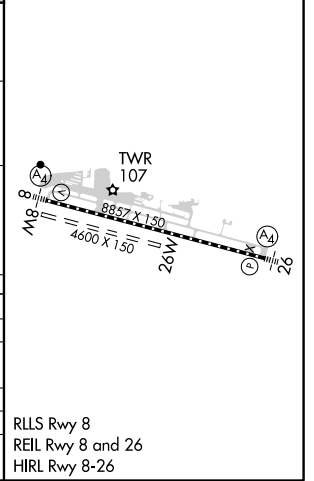
<p>When VGSI inop, procedure NA at night. Circling NA north of Rwy 8/26. ADF required. CAUTION: Any go-around after passing MAP will not provide standard obstruction clearance.</p>	<p>MALSF</p>	<p>MISSED APPROACH: Immediate climbing right turn to 5600 on heading 310° and on CGL NDB bearing 251° to intercept SSR VORTAC R-027 direct SSR VORTAC or EEF NDB and hold.</p>

ATIS <b>135.2</b>	ANCHORAGE CENTER <b>133.9</b>	JUNEAU TOWER* <b>118.7 (CTAF) 278.3</b>	GND CON <b>121.9</b>	JUNEAU RADIO <b>122.2</b>
----------------------	----------------------------------	--	-------------------------	------------------------------



ELEV 26	<b>D</b>	TDZE 25
---------	----------	---------

CATEGORY	A	B	C	D
S-LDA 8	3200-4	3175 (3200-4)		NA
CIRCLING	3200-4	3174 (3200-4)	3340-4 3314 (3400-4)	3640-4 3614 (3700-4)
NIGHT MINIMUMS				
S-LDA 8	3200-4	3175 (3200-4)		NA
CIRCLING	3200-5 3174 (3200-5)	3200-10 3174 (3200-10)	3340-10 3314 (3400-10)	3640-10 3614 (3700-10)



AK, 10 SEP 2020 to 05 NOV 2020

AK, 10 SEP 2020 to 05 NOV 2020

RLS Rwy 8  
REIL Rwy 8 and 26  
HIRL Rwy 8-26