

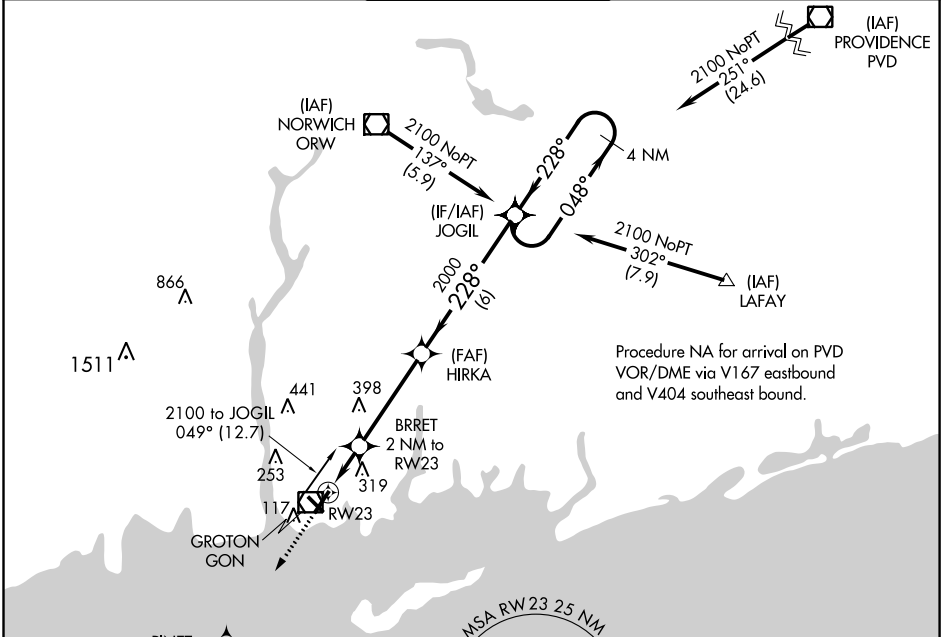
APP CRS	Rwy Idg	<b>5000</b>
<b>228°</b>	TDZE	<b>8</b>
	Apt Elev	<b>9</b>

# RNAV (GPS) RWY 23

GROTON-NEW LONDON (GON)

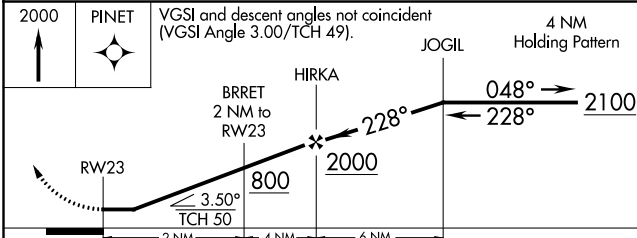
<p><b>▽</b> DME/DME RNP-0.3 NA. Night landing: Rwy 15 NA. Helicopter visibility reduction below 1 SM NA.</p>		<p>MISSED APPROACH: Climb to 2000 direct PINET and hold.</p>		
--	--	--	--	--

ATIS <b>127.0</b>	PROVIDENCE APP CON * <b>125.75 319.2</b>	GROTON TOWER * <b>125.6 (CTAF) 236.775</b>	GND CON <b>121.65 236.775</b>	CLNC DEL * <b>119.85</b>
----------------------	---	---	----------------------------------	-----------------------------

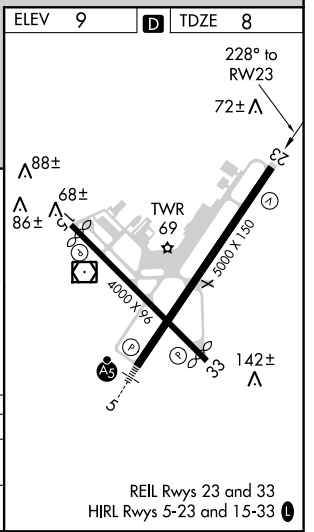


NE-1, 10 SEP 2020 to 08 OCT 2020

NE-1, 10 SEP 2020 to 08 OCT 2020



CATEGORY	A	B	C	D
LNVA MDA	560-1	552 (600-1)	560-1½ 552 (600-1½)	560-1¾ 552 (600-1¾)
CIRCLING	580-1 571 (600-1)	620-1 611 (700-1)	620-1¾ 611 (700-1¾)	620-2 611 (700-2)



REIL Rwy 23 and 33  
HIRL Rwy 5-23 and 15-33