

WAAS CH <b>45521</b> <b>W05A</b>	APP CRS <b>048°</b>	Rwy Idg TDZE Apt Elev	<b>5000</b> <b>8</b> <b>9</b>
--	------------------------	-----------------------------	-------------------------------------

# RNAV (GPS) RWY 5

GROTON-NEW LONDON (GON)

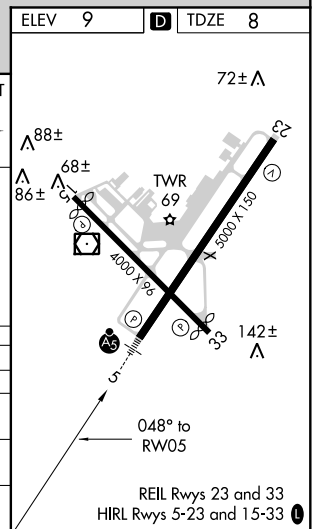
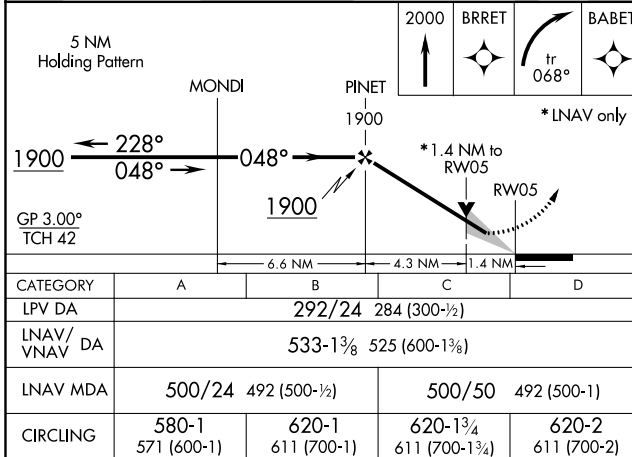
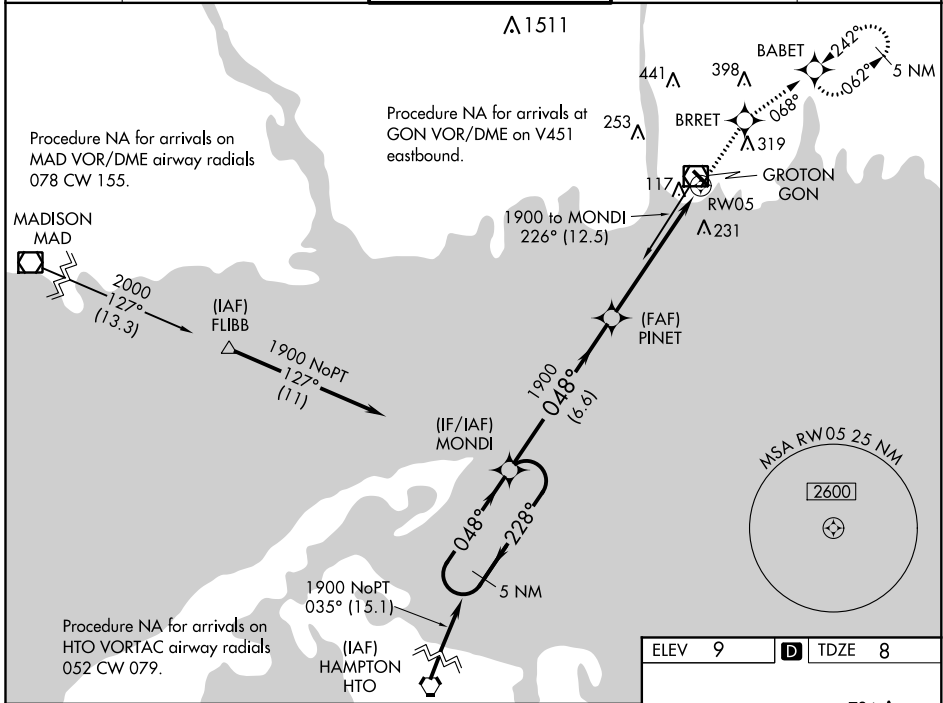
**▼** For uncompensated Baro-VNAV systems, LNAV/VNAV NA below -15°C (5°F) or above 54°C (130°F). DME/DME RNP-0.3 NA.  
Night landing: Rwy 15 NA. For inop MALSR, increase LPV all Cats visibility to RVR 5000 and LNAV Cat C/D visibility to 1½.

MALSR



**MISSED APPROACH:** Climb to 2000 direct BRRET and on track 068° to BABET and hold, continue climb-in-hold to 2000.

ATIS <b>127.0</b>	PROVIDENCE APP CON * <b>125.75 319.2</b>	GROTON TOWER * <b>125.6 (CTAF) 236.775</b>	GND CON <b>121.65 236.775</b>	CLNC DEL * <b>119.85</b>
----------------------	---	---	----------------------------------	-----------------------------



NE-1, 10 SEP 2020 to 08 OCT 2020

NE-1, 10 SEP 2020 to 08 OCT 2020