

VOR/DME GON 110.85 Chan 45 (Y)	APP CRS 242°	Rwy Idg TDZE Apt Elev	5000 8 9
---	------------------------	-----------------------------	-------------------------------------

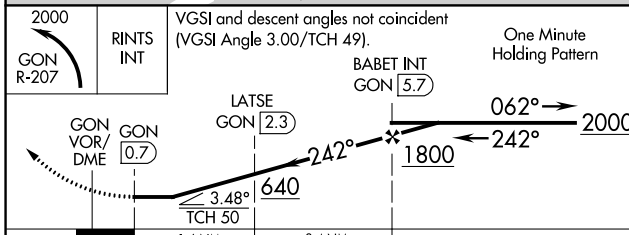
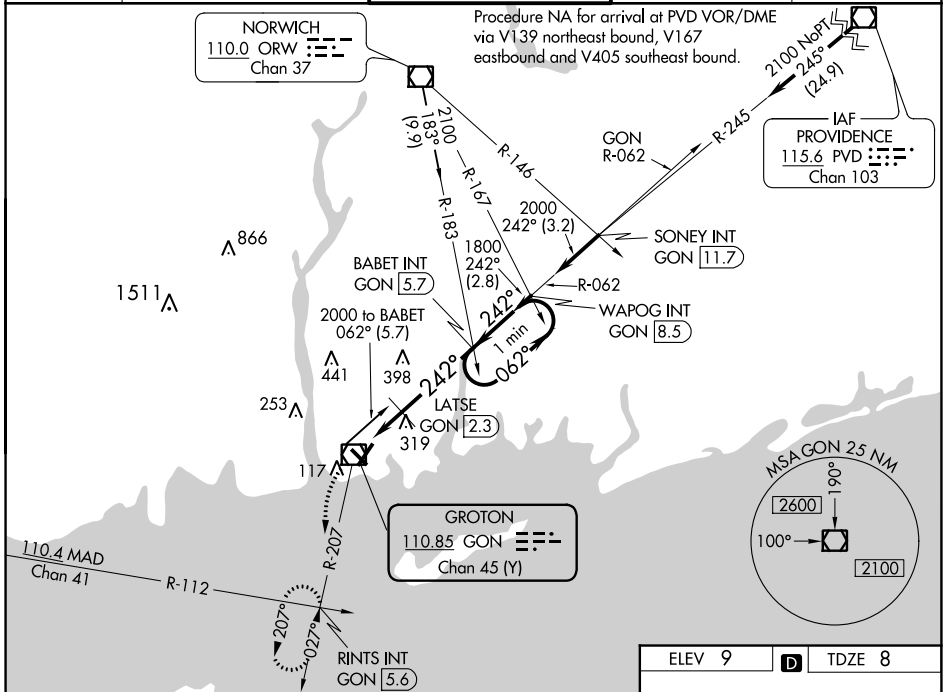
VOR RWY 23

GROTON-NEW LONDON (GON)

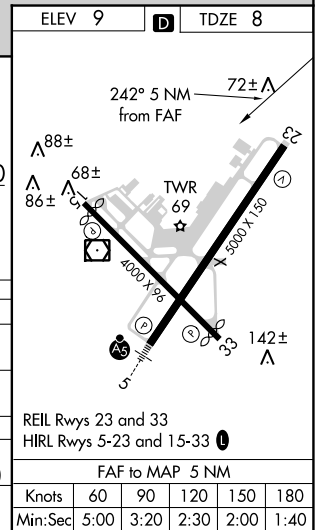
N Night landing: Rwy 15 NA.
Helicopter visibility reduction below 1 SM NA.

M MISSED APPROACH: Climbing left turn to 2000 via GON R-207 to RINTS INT/GON 5.6 DME and hold.

ATIS 127.0	PROVIDENCE APP CON * 125.75 319.2	GROTON TOWER * 125.6 (CTAF) 236.775	GND CON 121.65 236.775	CLNC DEL * 119.85
----------------------	---	---	----------------------------------	-----------------------------



CATEGORY	A	B	C	D
S-23	640-1	632 (700-1)	640-1 ³ / ₄ 632 (700-1 ³ / ₄)	640-2 632 (700-2)
CIRCLING	640-1	631 (700-1)	640-1 ³ / ₄ 631 (700-1 ³ / ₄)	640-2 631 (700-2)
LATSE FIX MINIMUMS				
S-23	580-1	572 (600-1)	580-1 ¹ / ₂ 572 (600-1 ¹ / ₂)	580-1 ³ / ₄ 572 (600-1 ³ / ₄)
CIRCLING	580-1 571 (600-1)	620-1 611 (700-1)	620-1 ³ / ₄ 611 (700-1 ³ / ₄)	620-2 611 (700-2)



NE-1, 10 SEP 2020 to 08 OCT 2020

NE-1, 10 SEP 2020 to 08 OCT 2020