

LOC/DME I-VSF 111.3 Chan 50	APP CRS 051°	Rwy Idg 5501 TDZE 575 Apt Elev 577
---	------------------------	---

LOC/DME RWY 5

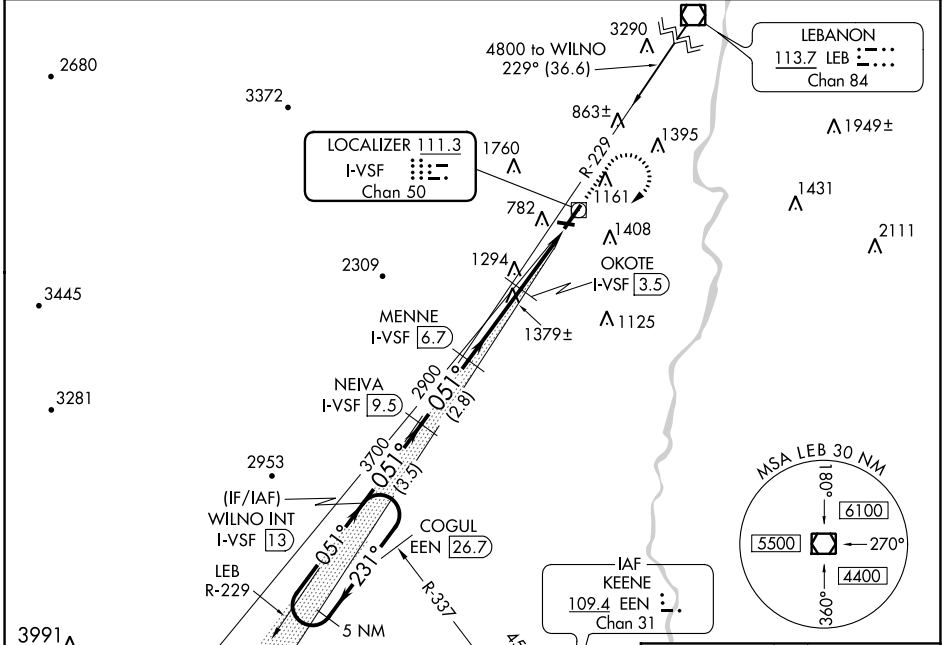
HARTNESS STATE (SPRINGFIELD) (VSF')

NA
-24°C

Helicopter visibility reduction below 3/4 SM NA. Circling to Rwy 11, 23, 29 NA at night.

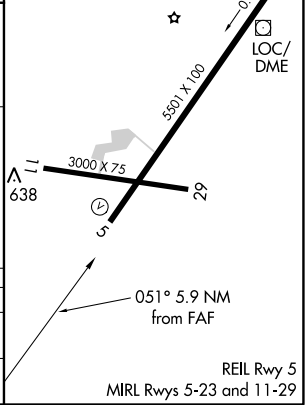
MISSED APPROACH: Climb to 2300 then climbing right turn to 4500 via heading 255° and LEB VOR/DME R-229 to WILNO INT/I-VSF 13 DME and hold, continue climb-in-hold to 4500.

ASOS 121.425	BOSTON CENTER 134.7 381.4	UNICOM 122.8 (CTAF)
------------------------	-------------------------------------	-------------------------------



ELEV 577	TDZE 575
----------	----------

5 NM Holding Pattern	WILNO INT I-VSF 13	NEIVA I-VSF 9.5	2300	4500	LEB R-229	WILNO INT
4500	← 231°	→ 051°	3700	2900	1680	0.6 2.1 NM
VGSIs and descent angles not coincident (VGSi Angle 4.00/TCH 59).						
← 3.5 NM		← 2.8 NM		← 3.2 NM		← 0.6 2.1 NM
CATEGORY	A	B	C	D		
S-5	1540-1¼ 965 (1000-1¼)	1540-1½ 965 (1000-1½)	1540-3	965 (1000-3)		
CIRCLING	1560-1¼ 983 (1000-1¼)	1720-1½ 1143 (1200-1½)	1720-3 1143 (1200-3)	2400-3 1823 (1900-3)		



NE-1, 10 SEP 2020 to 08 OCT 2020

NE-1, 10 SEP 2020 to 08 OCT 2020