

APP CRS	Rwy Idg	4204
088°	TDZE	818
	Apt Elev	835

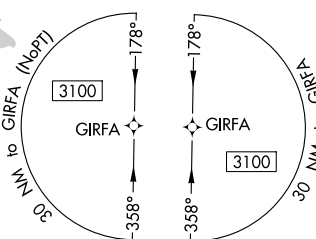
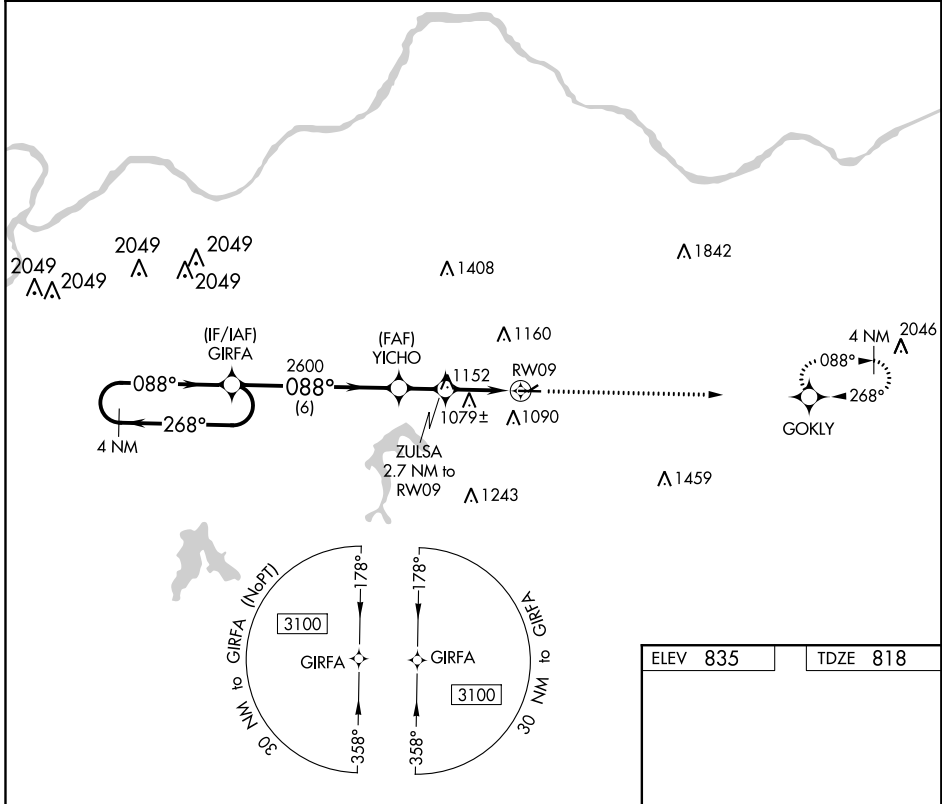
RNAV (GPS) RWY 9

EAST KANSAS CITY (3GV)

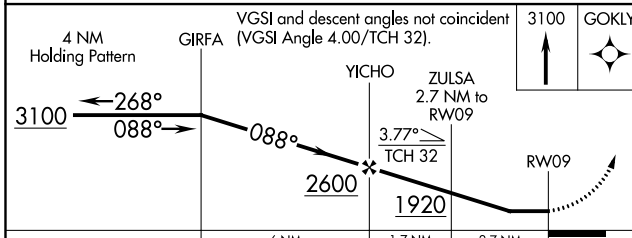
NA DME/DME RNP-0.3 NA. Helicopter visibility reduction below 1 SM NA. Procedure NA at night. Use Charles B Wheeler Downtown altimeter setting.

MISSED APPROACH: Climb to 3100 direct GOKLY and hold.

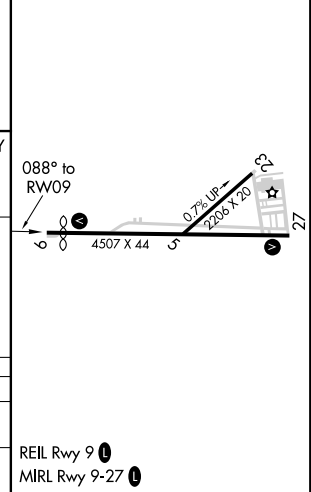
KANSAS CITY APP CON 118.4 307.35	CLNC DEL 121.3	UNICOM 122.8 (CTAF)
--	--------------------------	-------------------------------



ELEV 835	TDZE 818
----------	----------



CATEGORY	A	B	C	D
LNVA MDA	1400-1	582 (600-1)		NA
CIRCLING	1460-1	625 (700-1)		NA



NC-3, 10 SEP 2020 to 08 OCT 2020

NC-3, 10 SEP 2020 to 08 OCT 2020