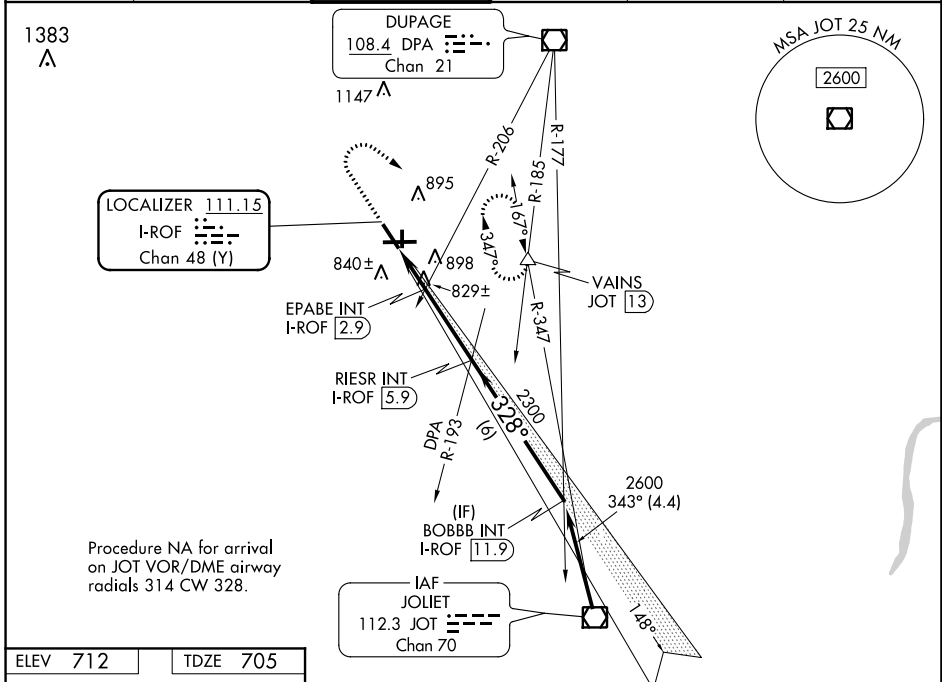


LOC/DME I-ROF 111.15 Chan 48 (Y)	APP CRS 328°	Rwy Idg TDZE Apt Elev	5503 705 712
---	------------------------	-----------------------------	---

LOC RWY 33

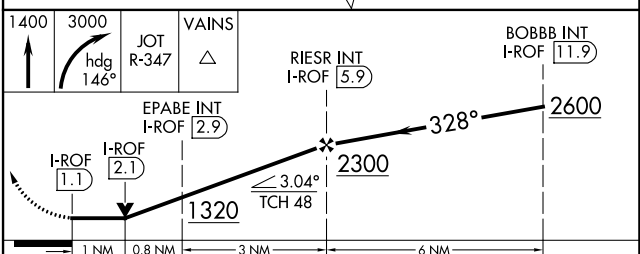
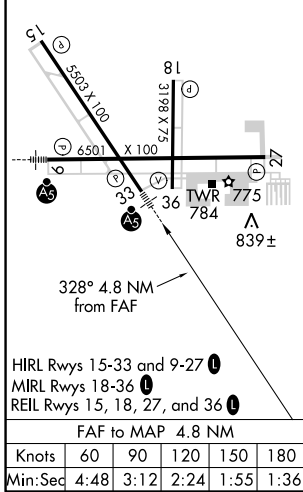
AURORA MUNI (A.R.R.)

ATIS 125.85	CHICAGO APP CON 133.5 349.0	AURORA TOWER* 120.6 (CTAF)	GND CON 121.7	CLNC DEL 121.7 (When tower closed)	UNICOM 122.95 123.5
------------------------------	--	---	--------------------------------	--	--------------------------------------



Procedure NA for arrival on JOT VOR/DME airway radials 314 CW 328.

ELEV 712	TDZE 705
----------	----------



CATEGORY	A	B	C	D
S-LOC 33	1320-½ 615 (700-½)		1320-1¾ 615 (700-1¾)	
C CIRCLING	1320-1 608 (700-1)		1320-1¾ 608 (700-1¾)	1320-2 608 (700-2)
EPABE FIX MINIMUMS (DUAL VOR RECEIVERS or DME REQUIRED)				
S-LOC 33	1080-½ 375 (400-½)		1080-⅝ 375 (400-⅝)	
C CIRCLING	1200-1 488 (500-1)		1200-1½ 488 (500-1½)	1320-2 608 (700-2)

EC-3, 10 SEP 2020 to 08 OCT 2020

EC-3, 10 SEP 2020 to 08 OCT 2020