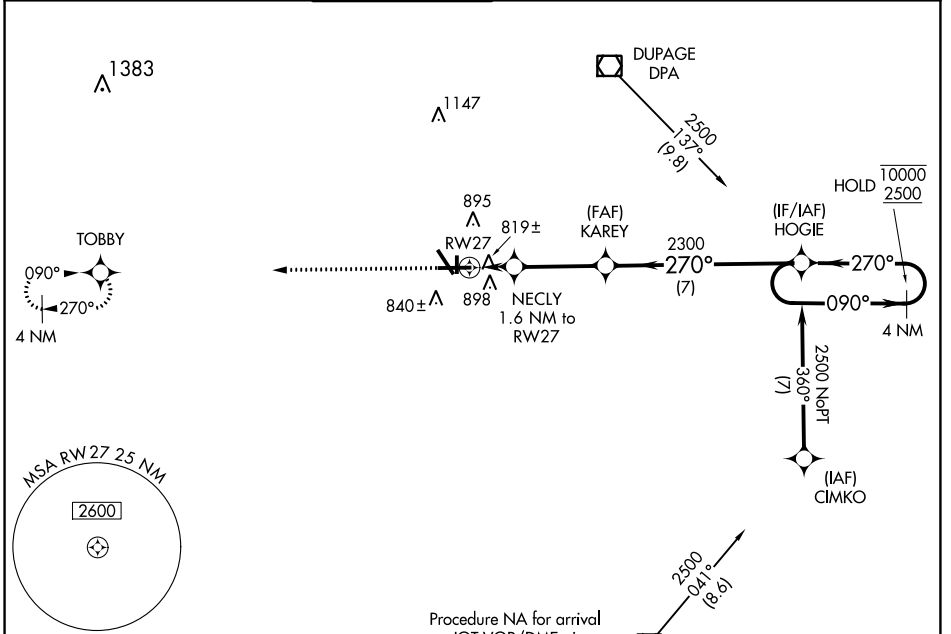


WAAS CH <b>48822</b> <b>W27A</b>	APP CRS <b>270°</b>	Rwy Idg TDZE Apt Elev	<b>6501</b> <b>707</b> <b>712</b>
--	------------------------	-----------------------------	---

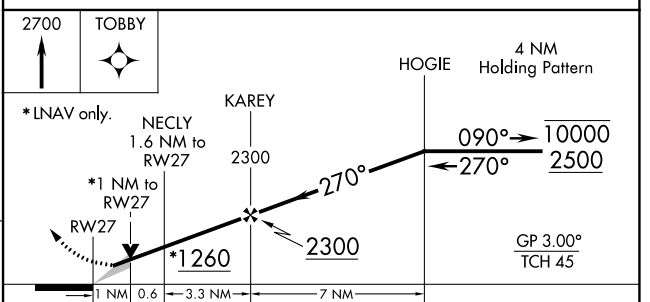
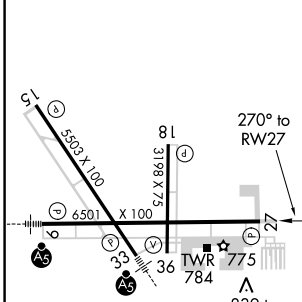
# RNAV (GPS) RWY 27

AURORA MUNI (A.R.R.)

RNP APCH.		MISSED APPROACH: Climb to 2700 direct TOBBY and hold.			
ATIS <b>125.85</b>	CHICAGO APP CON <b>133.5 349.0</b>	AURORA TOWER★ <b>120.6</b> (CTAF) <b>0</b>	GND CON <b>121.7</b>	CLNC DEL <b>121.7</b> (When tower closed)	UNICOM <b>122.95 123.5</b>



ELEV <b>712</b>	TDZE <b>707</b>
-----------------	-----------------



CATEGORY	A	B	C	D
LPV DA		907- <sup>3</sup> / <sub>4</sub>	200 (200- <sup>3</sup> / <sub>4</sub> )	
LNAV/VNAV DA		1002-1	295 (300-1)	
LNAV MDA		1080-1	373 (400-1)	
<b>C</b> CIRCLING	1200-1	488 (500-1)	1200-1½ 488 (500-1½)	1320-2 608 (700-2)

MIRL Rwy 18-36 **0**  
 HIRL Rwy 15-33 and 9-27 **0**  
 REIL Rwy 15, 18, 27, and 36 **0**

EC-3, 10 SEP 2020 to 08 OCT 2020

EC-3, 10 SEP 2020 to 08 OCT 2020