

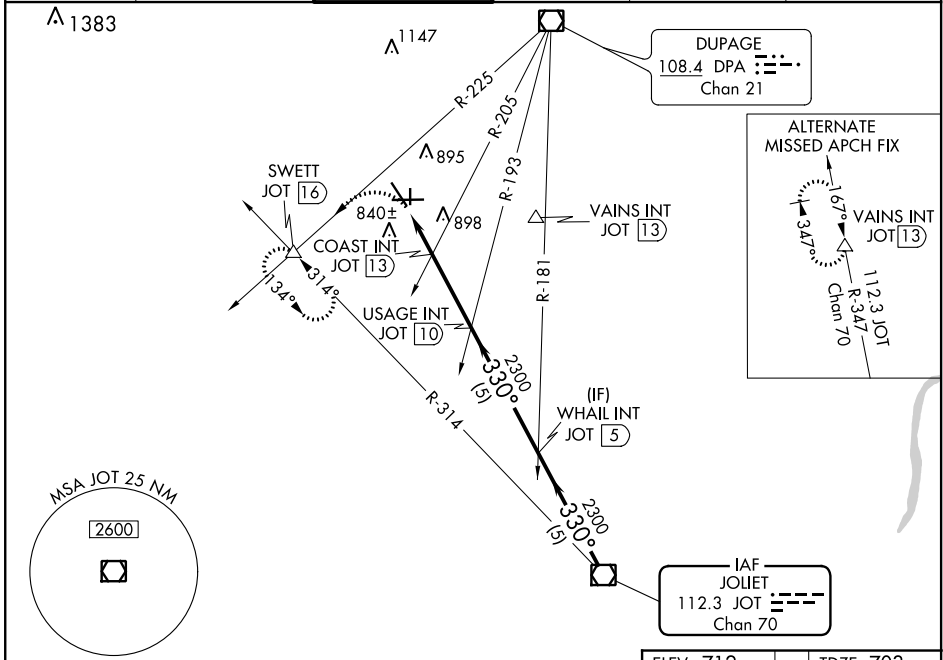
VOR/DME JOT 112.3 Chan 70	APP CRS 330°	Rwy Idg TDZE Apt Elev	3198 703 712
---	------------------------	-----------------------------	---

VOR RWY 36

AURORA MUNI (A.R.R.)

MISSED APPROACH: Climbing left turn to 3000 on DPA VOR/DME R-225 to SWETT INT/16 DME and hold.

ATIS 125.85	CHICAGO APP CON 133.5 349.0	AURORA TOWER* 120.6 (CTAF) 0	GND CON 121.7	CLNC DEL 121.7 (When tower closed)	UNICOM 122.95 123.5
-----------------------	---------------------------------------	--	-------------------------	---	-------------------------------



3000 DPA R-225	SWETT △	USAGE INT JOT 10	WHAIL INT JOT 5	JOT VOR/DME
		COAST INT JOT 13	JOT 13.7	JOT 15
1360		2300	2300	330° 2300
1.3 0.7		3 NM	5 NM	5 NM
CATEGORY	A	B	C	D
S-36	1360-1 657 (700-1)		1360-1¾ 657 (700-1¾)	1360-2 657 (700-2)
C CIRCLING	1360-1 648 (700-1)		1360-1¾ 648 (700-1¾)	1360-2 648 (700-2)
COAST FIX MINIMUMS (DUAL VOR RECEIVERS or DME REQUIRED)				
S-36	1160-1 457 (500-1)		1160-1¼ 457 (500-1¼)	1160-1½ 457 (500-1½)
C CIRCLING	1200-1 488 (500-1)		1200-1½ 488 (500-1½)	1320-2 608 (700-2)

ELEV 712 TDZE 703

MIRL Rwy 18-36 **0**
HIRL Rwy 15-33 and 9-27 **0**
REIL Rwy 15, 18, 27, and 36 **0**

FAF to MAP 5 NM

Knots	60	90	120	150	180
Min:Sec	5:00	3:20	2:30	2:00	1:40

EC-3, 10 SEP 2020 to 08 OCT 2020

EC-3, 10 SEP 2020 to 08 OCT 2020