

# NDB-B

SOUTH ST PAUL MUNI-RICHARD E FLEMING FIELD (SGS)

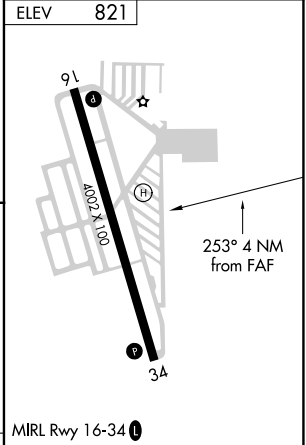
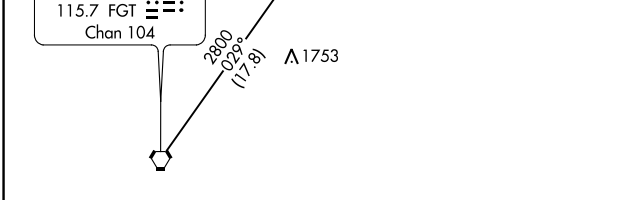
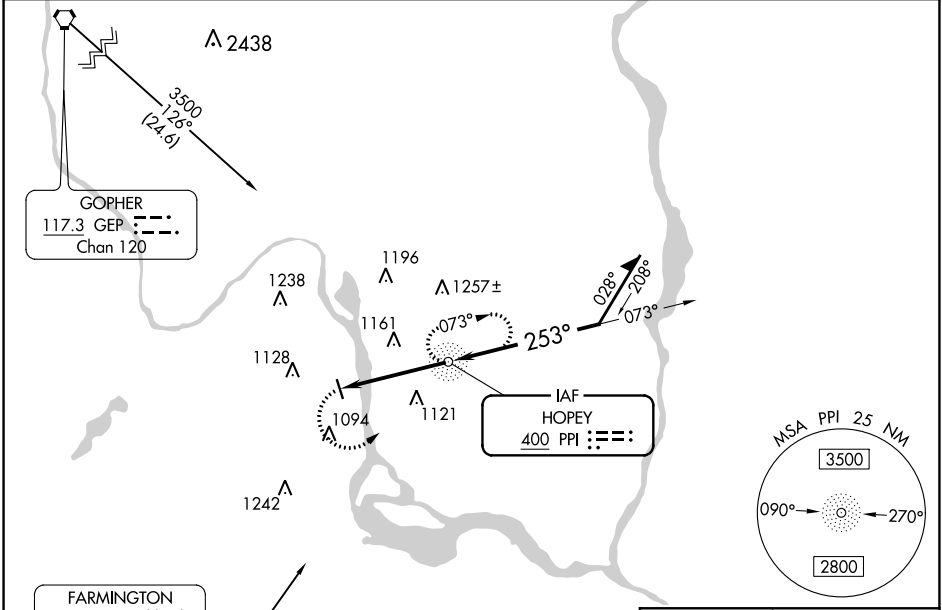
NDB PPI <b>400</b>	APP CRS <b>253°</b>	Rwy Idg TDZE Apt Elev	<b>N/A</b> <b>N/A</b> <b>821</b>
-----------------------	------------------------	-----------------------------	--

**NA**

When local altimeter setting not received, use Minneapolis Wold-Chamberlain Intl altimeter setting and increase all MDA 40 feet. Increase Cat C/D visibility ¼ mile.

**MISSED APPROACH:** Climbing left turn to 2700 direct PPI NDB and hold, continue climb-in-hold to 2700.

AWOS-3 <b>119.425</b>	MINNEAPOLIS APP CON <b>121.2 335.65</b>	CLNC DEL <b>118.2</b>	UNICOM <b>122.7 (CTAF) 0</b>
--------------------------	--	--------------------------	---------------------------------



ELEV	821									
CATEGORY	A	B	C	D	FAF to MAP 4 NM					
CIRCLING	1520-1 699 (700-1)	1540-1 719 (800-1)	1540-2 719 (800-2)	1620-2½ 799 (800-2½)	Knots	60	90	120	150	180
					Min:Sec	4:00	2:40	2:00	1:36	1:20

NC-1, 10 SEP 2020 to 08 OCT 2020

NC-1, 10 SEP 2020 to 08 OCT 2020