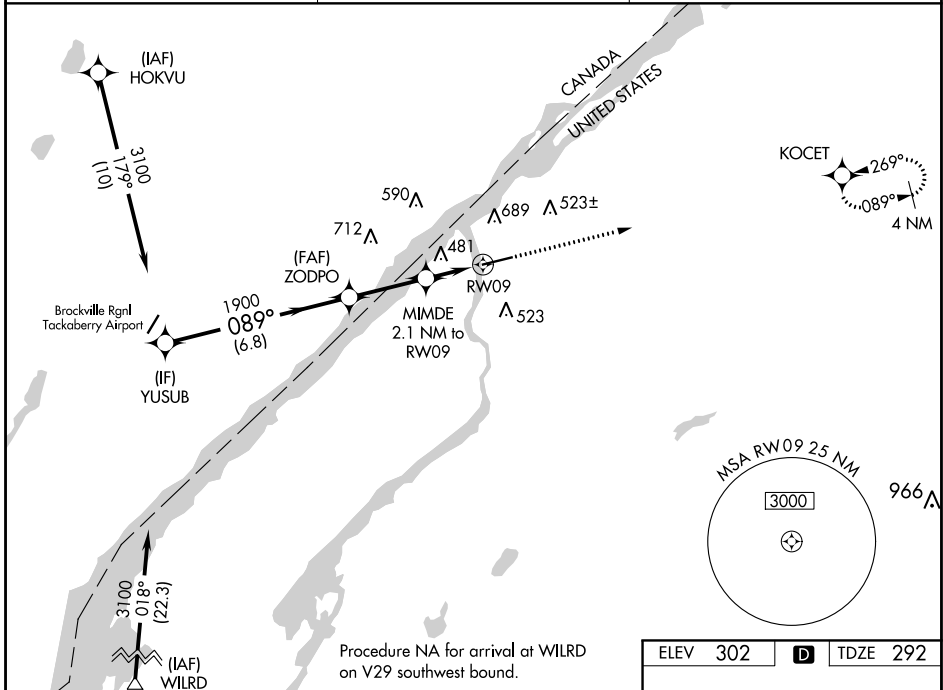


WAAS CH <b>69528</b> <b>W09A</b>	APP CRS <b>089°</b>	Rwy ldg <b>6006</b> TDZE <b>292</b> Apt Elev <b>302</b>
--	------------------------	---

# RNAV (GPS) RWY 9

OGDENSBURG INTL (OGS)

RNP APCH.		MISSED APPROACH: Climb to 2000 direct KOCET and hold.
<p><b>▼</b> Rwy 9 helicopter visibility reduction below 3/4 SM NA. For uncompensated Baro-VNAV systems, LNAV/VNAV NA below -15°C or above 54°C.</p>		
AWOS-3 <b>118.525</b>	BOSTON CENTER <b>135.25 377.1</b>	UNICOM <b>122.8 (CTAF) 0</b>

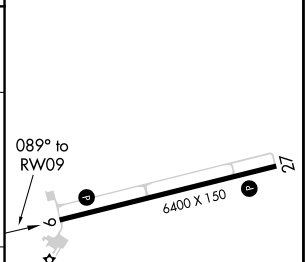
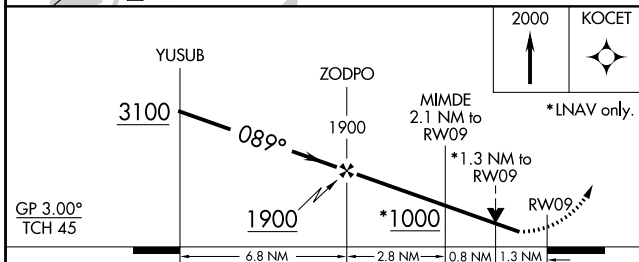


NE-2, 10 SEP 2020 to 08 OCT 2020

NE-2, 10 SEP 2020 to 08 OCT 2020

Procedure NA for arrival at WILRD on V29 southwest bound.

ELEV 302	<b>D</b>	TDZE 292
----------	----------	----------



CATEGORY	A	B	C	D
LPV DA		543-3/4	251 (300-3/4)	
LNAV/VNAV DA		781-13/8	489 (500-13/8)	
LNAV MDA	740-1	448 (500-1)	740-13/8	448 (500-13/8)
<b>C</b> CIRCLING	760-1 458 (500-1)	1000-1 698 (700-1)	1000-2 698 (700-2)	1000-2 1/4 698 (700-2 1/4)

REIL Rwy 27  
HIRL Rwy 9-27 **0**