

LOC I-ORB	APP CRS	Rwy Idg	<b>4074</b>
<b>109.15</b>	<b>145°</b>	TDZE	<b>11</b>
		Apt Elev	<b>11</b>

# LOC RWY 14

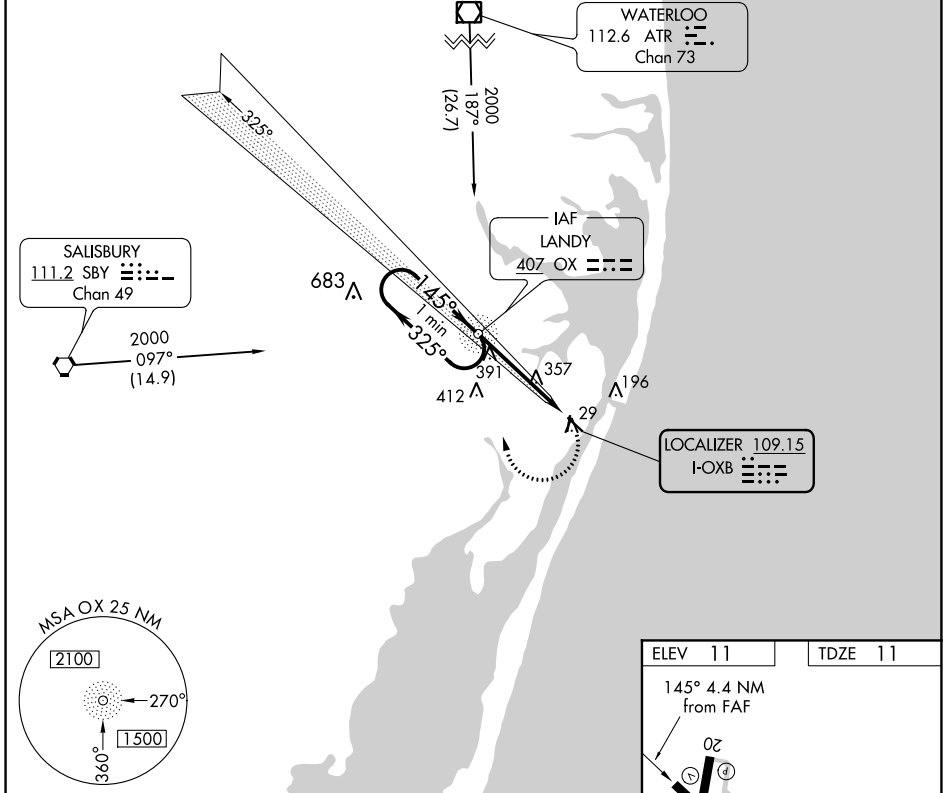
OCEAN CITY MUNI (OXB)

ADF required for procedure entry. ADF required.

▼ Straight-in Rwy 14 NA at night. Circling Rwy 2, 14, 20 NA at night. When local altimeter setting not received, use Salisbury altimeter setting and increase all MDAs 60 feet and visibility S-14 Cat B and Circling Cat B/C/D ¼ SM. Rwy 14 helicopter visibility reduction below 1 SM NA.

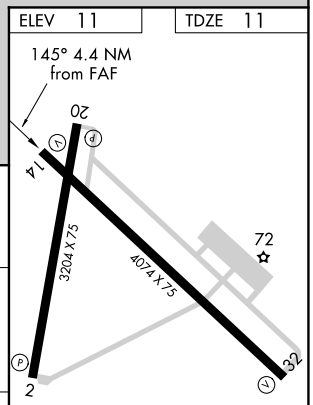
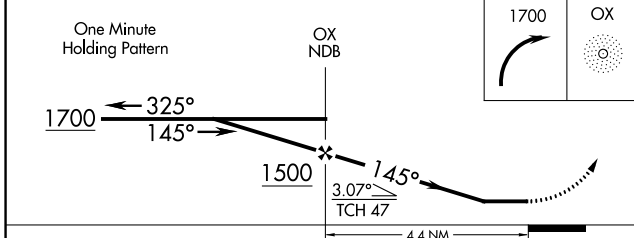
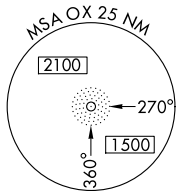
▲ NA MISSED APPROACH: Climbing right turn to 1700 direct OX NDB and hold.

ASOS	PATUXENT APP CON *	CLNC DEL	UNICOM
<b>119.025</b>	<b>127.95 314.0</b>	<b>121.75</b>	<b>123.05 (CTAF) 0</b>



NE-3, 10 SEP 2020 to 08 OCT 2020

NE-3, 10 SEP 2020 to 08 OCT 2020



CATEGORY	A	B	C	D	REIL Rws 2 and 20 MRL Rws 2-20 and 14-32 FAF to MAP 4.4 NM
S-14	700-1 689 (700-1)		700-2 689 (700-2)	700-2 ½ 689 (700-2 ½)	
CIRCLING	700-1 689 (700-1)		700-2 689 (700-2)	720-2 ½ 709 (800-2 ½)	
					Knots: 60 90 120 150 180 Min:Sec: 4:24 2:56 2:12 1:46 1:28