

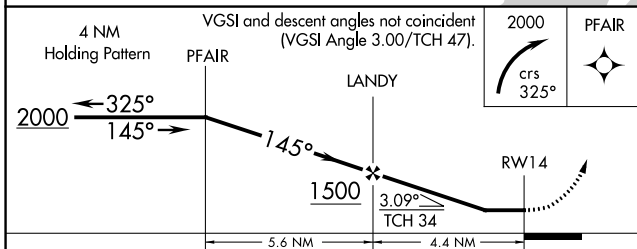
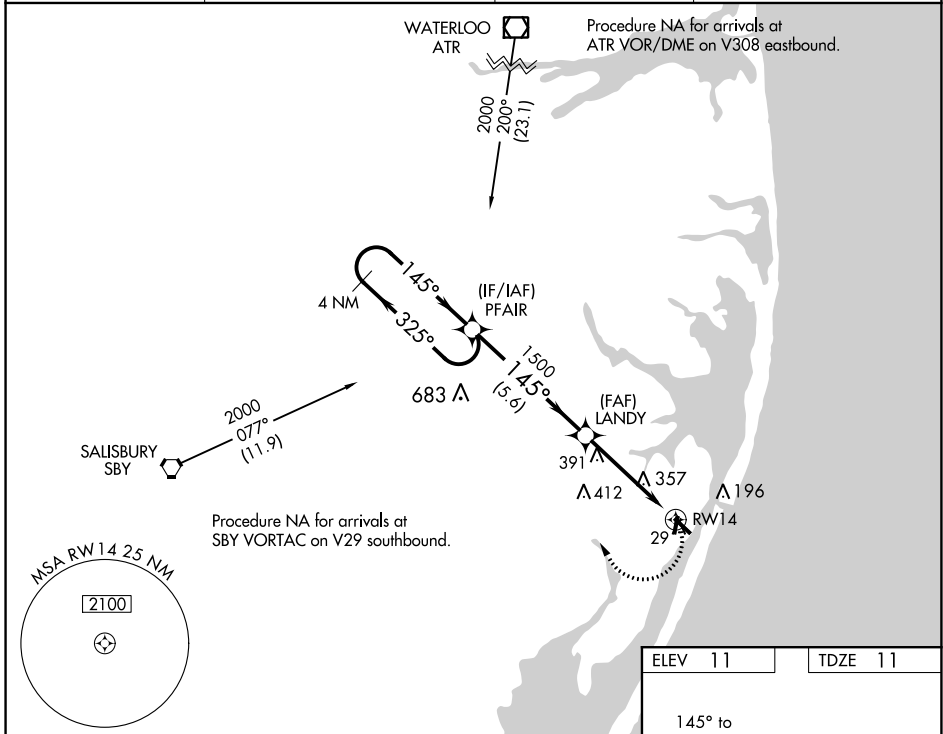
APP CRS	Rwy Idg	4074
145°	TDZE	11
	Apt Elev	11

RNAV (GPS) RWY 14

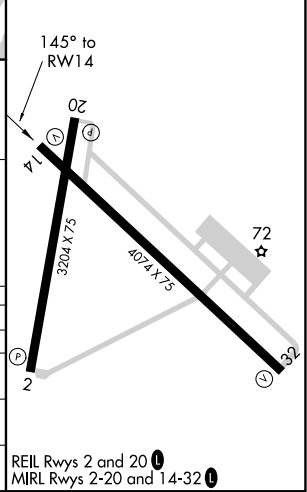
OCEAN CITY MUNI (OXB)

RNP APCH.	<p>▼ Straight-in Rwy 14 NA at night, Circling Rwy 2, 14, 20 NA at night. When local altimeter setting not received, use Salisbury altimeter setting and increase all MDAs 60 feet and visibility LNAV Cat B and Circling Cat B/C/D ¼ SM. Rwy 14 helicopter visibility reduction below 1 SM NA.</p>	<p>⚠ MISSED APPROACH: Climbing right turn to 2000 on 325° course to PFAIR and hold.</p>
-----------	--	---

ASOS	PATUXENT APP CON *	CLNC DEL	UNICOM
119.025	127.95 314.0	121.75	123.05 (CTAF) 0



ELEV 11	TDZE 11
---------	---------



CATEGORY	A	B	C	D
LPV DA			NA	
LNAV/VNAV DA			NA	
LNAV MDA	700-1	689 (700-1)	700-2 689 (700-2)	700-2½ 689 (700-2½)
CIRCLING	700-1	689 (700-1)	700-2 689 (700-2)	720-2½ 709 (800-2½)

NE-3, 10 SEP 2020 to 08 OCT 2020

NE-3, 10 SEP 2020 to 08 OCT 2020