

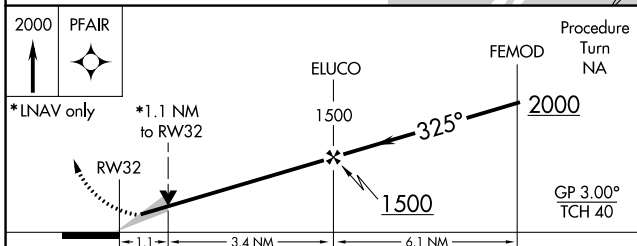
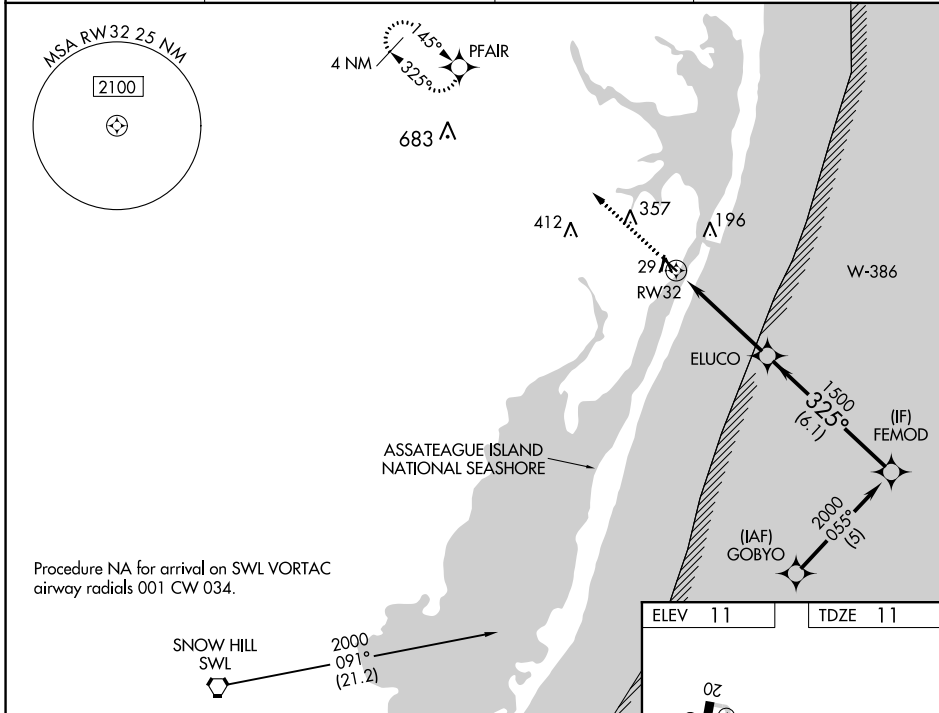
WAAS CH 40413 W32A	APP CRS 325°	Rwy ldg 4074 TDZE 11 Apt Elev 11
--	------------------------	---

RNAV (GPS) RWY 32

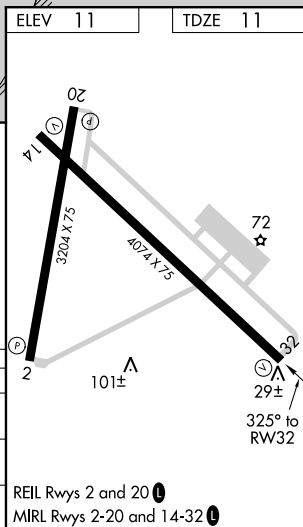
OCEAN CITY MUNI (OXB)

RNP APCH.	<p>▼ For uncompensated Baro-VNAV systems, LNAV/VNAV NA below -15°C or above 48°C. ▲ Baro-VNAV and VDP NA when using Salisbury altimeter setting. When local altimeter setting not received, use Salisbury altimeter setting: increase LPV DA to 309 feet, LNAV/VNAV DA to 337 feet; increase all MDAs 60 feet and visibility Cat C ¼ SM.</p>	MISSED APPROACH: Climb to 2000 direct PFAIR and hold.
-----------	---	--

ASOS 119.025	PATUXENT APP CON * 127.95 314.0	CLNC DEL 121.75	UNICOM 123.05 (CTAF) 0
------------------------	---	---------------------------	----------------------------------



CATEGORY	A	B	C	D
LPV DA		261-1	250 (300-1)	
LNAV/VNAV DA		289-1	278 (300-1)	
LNAV MDA		380-1	369 (400-1)	380-1 ¼ 369 (400-1 ¼)



NE-3, 10 SEP 2020 to 08 OCT 2020

NE-3, 10 SEP 2020 to 08 OCT 2020