


LOC I-TXP <b>109.95</b>	APP CRS <b>249°</b>	Rwy Idg TDZE Apt Elev	<b>6000</b> <b>1038</b> <b>1062</b>
----------------------------	------------------------	-----------------------------	---

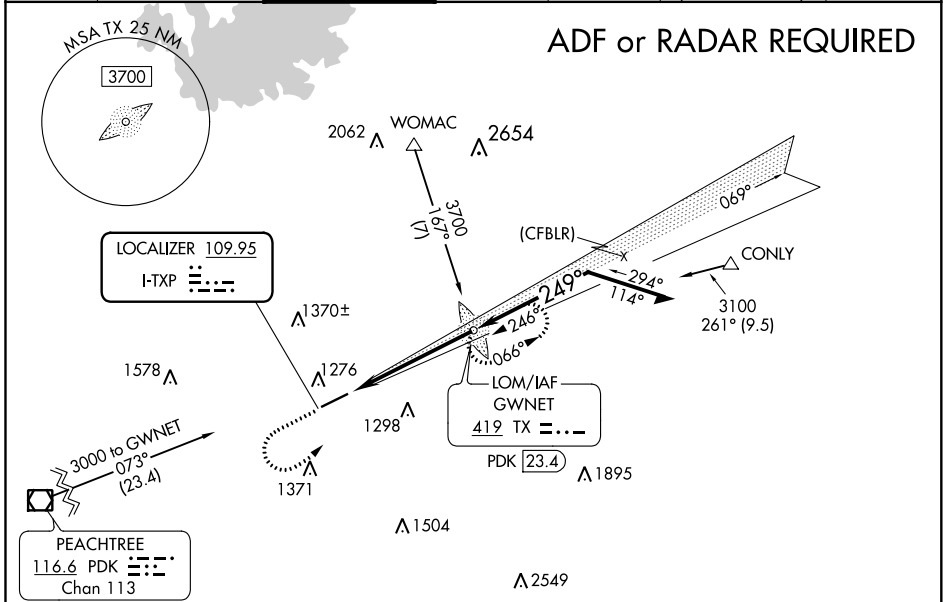
# ILS or LOC RWY 25

GWINNETT COUNTY-BRISCOE FIELD (LZU)

**⚠** When local altimeter setting not received, use Winder altimeter setting and increase all DA 51 feet, and all MDA 60 feet, increase S-LOC 25 Cat C/D and Circling Cat C/D visibility 1/2 SM. ADF required. For inop MALSR, when using Winder altimeter setting increase S-ILS 25 all Cats visibility to 3/8 SM.

**MALSR**  
  
**MISSED APPROACH:**  
 Climb to 1800 then climbing left turn to 3000 direct GWNET LOM and hold.


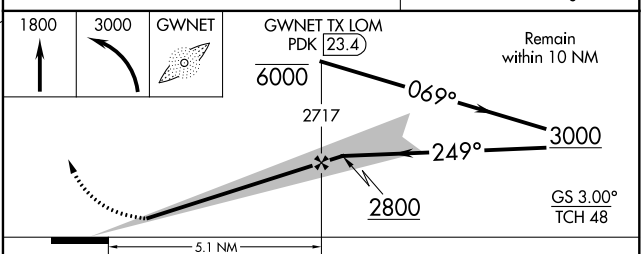
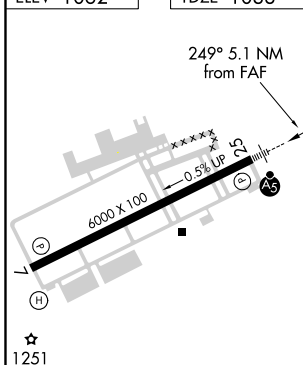
ATIS <b>132.275</b>	ATLANTA APP CON <b>126.975 239.275</b>	GWINNETT TOWER * <b>124.1 (CTAF) 0</b>	GND CON <b>121.8</b>	CLNC DEL <b>121.8</b>	CLNC DEL <b>134.0</b> (When twr closed)	UNICOM <b>123.05</b>
------------------------	---	---	-------------------------	--------------------------	---	-------------------------



ELEV 1062	TDZE 1038
-----------	-----------

**ALTERNATIVE MISSED APCH FIX**

GWNET  
419 TX  
PDK 23.4

CATEGORY	A	B	C	D
S-ILS 25		1238-1/2	200 (200-1/2)	
S-LOC 25	1540-1/2	502 (500-1/2)	1540-1	502 (500-1)
CIRCLING	1640-1	578 (600-1)	1640-1 1/2	1700-2 638 (700-2)

SE-4, 10 SEP 2020 to 08 OCT 2020

SE-4, 10 SEP 2020 to 08 OCT 2020