

WAAS CH <b>69300</b> <b>W05A</b>	APP CRS <b>049°</b>	Rwy Idg <b>5000</b> TDZE <b>928</b> Apt Elev <b>928</b>
----------------------------------------	------------------------	---------------------------------------------------------------

# RNAV (GPS) RWY 5

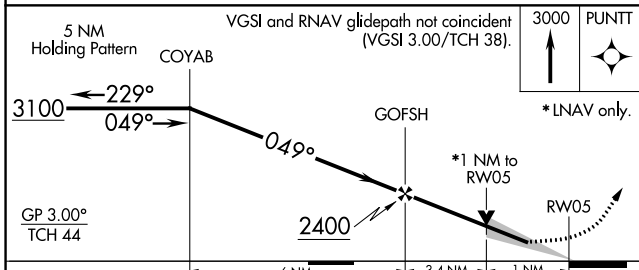
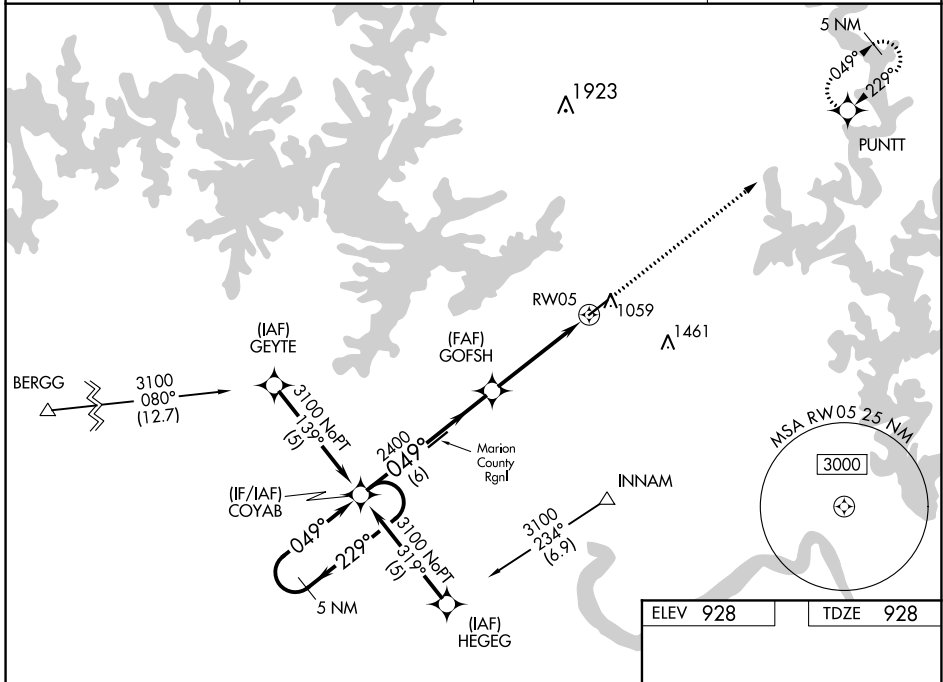
BAXTER COUNTY (BPK)

RNP APCH.

**⚠** For uncompensated Baro-VNAV systems, LNAV/VNAV NA below -16°C (4°F) or above 54°C (130°F). When local altimeter setting not received, use Flippin altimeter setting: increase LPV DA to 1261 feet, LNAV/VNAV DA to 1310 feet; increase all MDAs 60 feet and visibility LNAV Cat C 1/8 SM. Baro-VNAV NA when using Flippin altimeter setting. Circling NA for Cat C, SE of Rwy 5-23. Circling Rwy 23 NA at night.

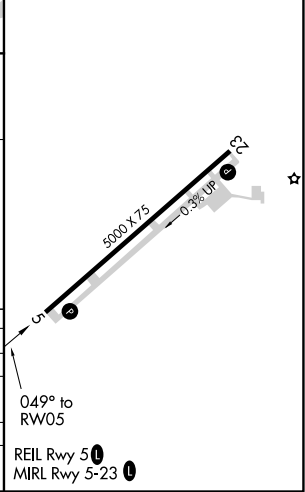
MISSED APPROACH: Climb to 3000 direct PUNTT and hold.

ASOS <b>133.975</b>	MEMPHIS CENTER <b>126.85 281.55</b>	GCO <b>121.72</b>	UNICOM <b>123.0 (CTAF) 0</b>
------------------------	----------------------------------------	----------------------	---------------------------------



ELEV 928	TDZE 928
----------	----------

CATEGORY	A	B	C	D
LPV DA		1201-1	273 (300-1)	NA
LNAV/VNAV DA		1250-1¼	322 (400-1¼)	NA
LNAV MDA		1280-1	352 (400-1)	NA
<b>C</b> CIRCLING	1400-1	472 (500-1)	1420-1½ 492 (500-1½)	NA



SC-1, 10 SEP 2020 to 08 OCT 2020

SC-1, 10 SEP 2020 to 08 OCT 2020